

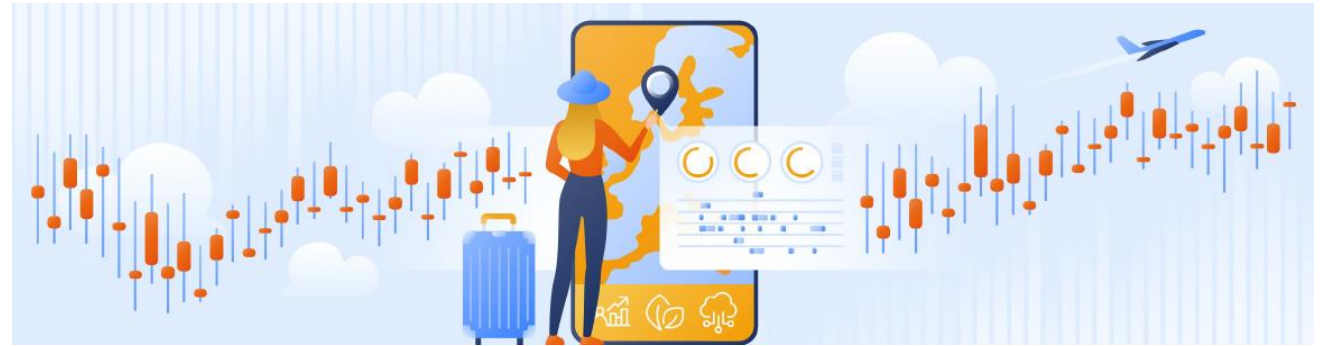
European Commission knowledge tools to support tourism

Filipe Batista e Silva

Project leader

European Commission, Joint Research Centre

Territorial Development Unit (EC - JRC.B.3)



OECD Global Forum on Tourism Statistics, Knowledge and Policies

Panel on "Data innovations and experiences to take forward from the crisis"

3rd November 2021, Republic of Korea

Introduction

- The Joint Research Centre is the **European Commission's science and knowledge service**. It provides evidence-based policy support in a wide range of areas.
- New research line on tourism issues since 2017, with focus on the detailed mapping of spatial and temporal patterns of tourism demand and supply.
- The COVID-19 pandemic increased the demand for **new tools and further knowledge generation and dissemination**:
 - ✓ Re-open EU website (launched 15 June 2020, still operative)
 - ✓ EU Tourism Dashboard (to be launched by end 2021)
 - ✓ Data collection and studies (on-going and to be launched)
- In collaboration with other EU Commission services (e.g., DG GROW, Eurostat).

Re-open EU

- Provides information to citizens **travel restrictions and other measures in relation to the COVID-19 pandemic** about in all EU Member States + 4 Schengen associated countries.
- Frequently updated, 24 languages (English + machine translation), and available as web app (<https://reopen.europa.eu>) and mobile app.

Impact:

- ✓ 30M+ unique visits (web app)
- ✓ 2'30" average visit duration (web app)
- ✓ 2.5M+ mobile app downloads
- ✓ Clear and concrete tool supporting the recovery of tourism





European Union

English **EN** ☰

Italy ▼

TRAVEL

Last update: 28-10-2021

What are the rules to enter this country from an EU Member State or Schengen Associated country?

All travellers entering Italy from any foreign location are required to fill out the [EU Digital Passenger Locator Form](#).

Children under 6 years old are exempt from pre-departure testing requirements. They are also exempt from self-isolation if the parent travelling with them holds an 'EU Digital COVID Certificate' (EUDCC) with proof of full vaccination or recovery.

Children aged 6 or over must present a pre-departure test. They are exempt from self-isolation if the parent travelling with them holds an EUDCC with proof of full vaccination or recovery.

Note: different conditions apply for travellers who have stayed in or transited one of the countries on [List E](#) in the **14 days before entering Italy**.

These rules are **valid until 15 December 2021**.

Entering this country with the EU Digital COVID certificate

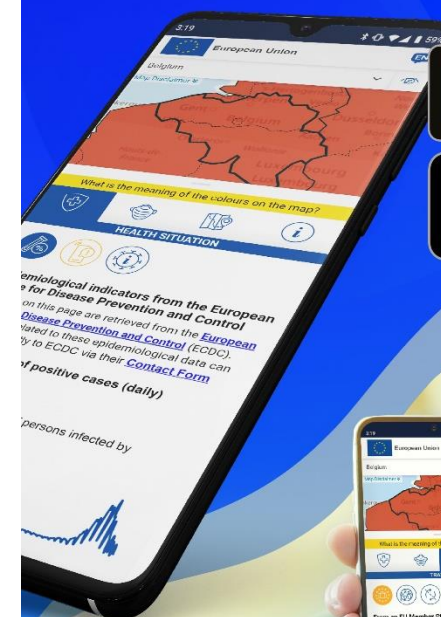
Holders of 'EU Digital Covid Certificates' (EUDCC) can enter Italy without being subject to further restrictions (testing or quarantine), if their certificate contains one of the following:

- Proof that they are **fully vaccinated** (they have

OpenLayers | OpenStreetMap contributors, Credit: EC-GISCO © EuroGeographics for the administrative boundaries | [Disclaimer](#)

Re-open EU

#StrongerTogether



EU Tourism Dashboard

What?

Public and online tool to assemble, publish and offer meaningful visualizations of tourism-relevant indicators, concerning the performance of the **Tourism Ecosystem** in relation to policy objectives: Resilience, Environmental impacts, Digitalisation, to identify issues and support policy action.

How?

Profiling and comparison of EU countries and regions according to the characteristics (indicators) of their tourism activity, based on data collected and harmonized from various sources (conventional and emerging) at the highest possible territorial granularity.

Why?

To promote the **green and digital transition of the tourism ecosystem, towards higher resilience and sustainability.**

Who?

EU (Council / Commission) initiative with consultation with Member States and relevant international organisations (e.g. UNWTO, OECD, ETC).



Italy

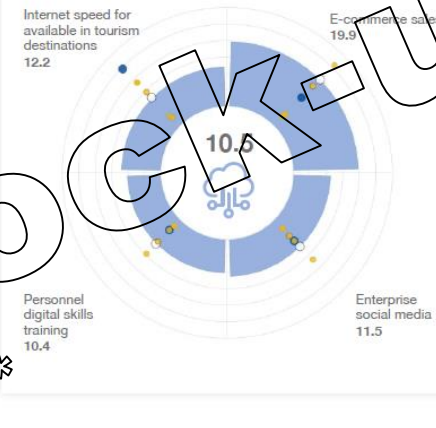
SOCIO-ECONOMIC RESILIENCE



ENVIRONMENTAL IMPACT



DIGITALISATION



38

Progress of tourism recovery 2020

156

Nights spent 2020

41

Average duration of stay 2019

21.2

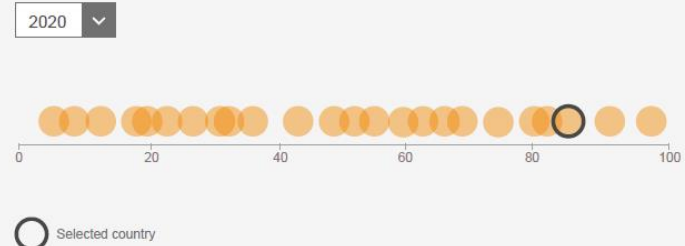
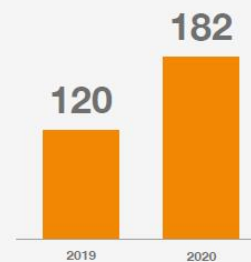
Average tourism expenditure 2019

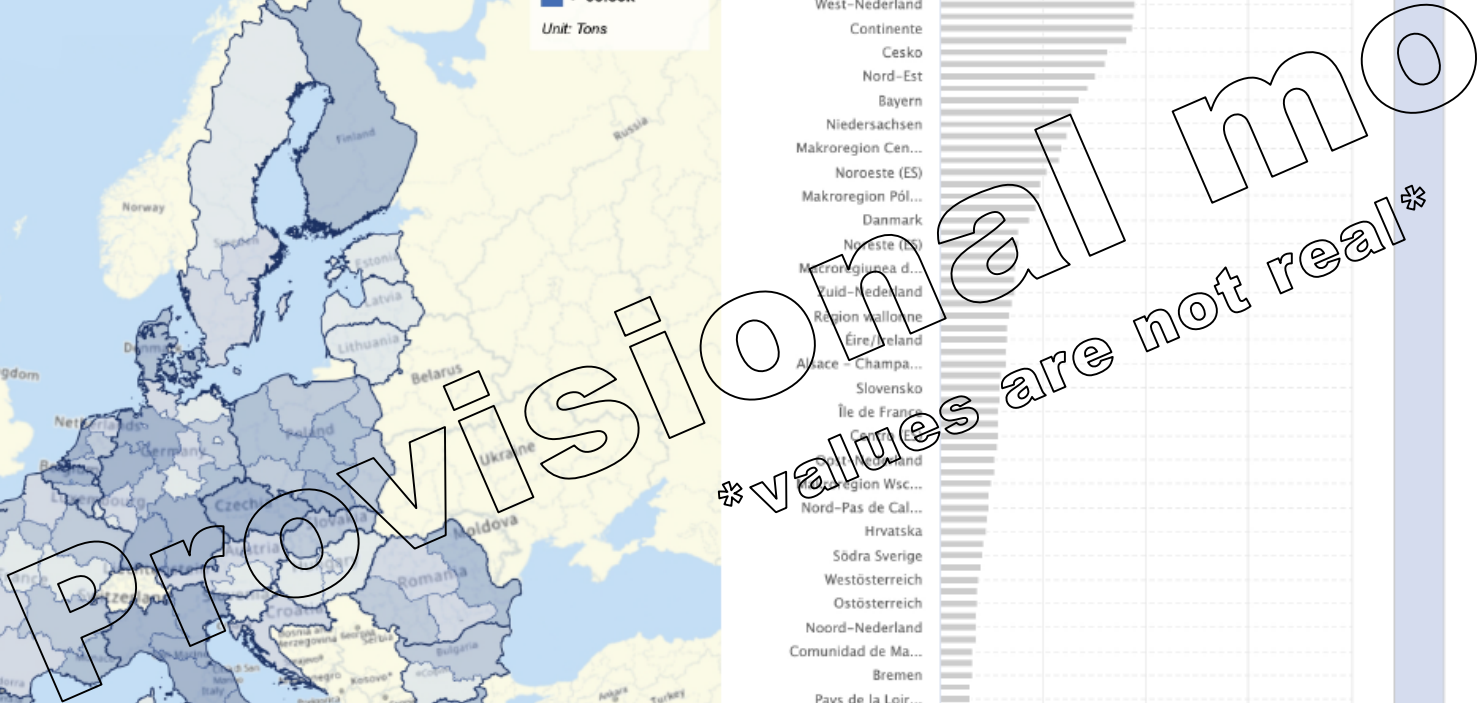
Socio-economic resilience

Tourism intensity

Lorem ipsum dolor sit amet. Qui facilis sit repellat obcaecati ut commodi possimus. At recu sandae veniam aut enim tempore eos unde quia cum omnis quaerat.

Est rerum natus in ratione internos et repudiandae repellendus ab aliquam illo et officiis fugit. In pariatur iste aut voluptas dolores qui recusandae quibusdam non commodi beatae id sic semper dolor est in veritas et in history.

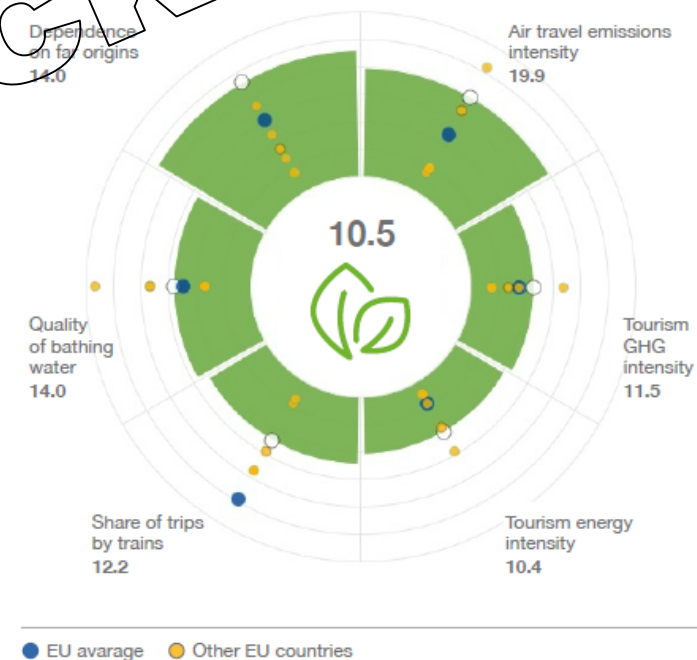




RANKING



Environmental impact



Lorem ipsum dolor sit amet. Qui facilis sit repellat obcaecati ut
commodi possimus. At recu sandae veniam aut enim tempore
eos unde quia cum omnis quaerat.

Est rerum natus in ratione internos et repudiandae repellendus
ab aliquam illo et officiis fugit. In pariatu andae veniam aut
enim tempore eos unde quia cum omnis quaerat iste aut
voluptas semper.