

SKEMA BUSINESS SCHOOL

GLOBAL EXECUTIVE MBA

Lead with Purpose
in the Age of AI.

skema
BUSINESS SCHOOL

AT HOME WORLDWIDE

Fall 2026 intake

CONTENTS

Message from the Dean	03
Mission and Values	04
Innovation and Hybridisation of Skills	05
Lead with Purpose in the Age of AI	06
A Dual Architecture : Mastery and Transformation	08
Your Executive Rhythm	10
Indicative Timeline	11
Residential Weeks : Global Immersion and Connection	12
Benefits	14
Admissions	16

Message from the Dean

SKEMA BUSINESS SCHOOL



“SKEMA Business School is a pioneering global higher education institution that has helped shape a new model of education: one that connects academic excellence with real-world impact, across cultures, industries, and generations. .

Within this vision, the Global Executive MBA is designed for leaders in motion – executives and senior professionals navigating complexity, accelerating change, and redefining performance in a world marked by geopolitical uncertainty, technological disruption, and ecological and social transitions.

At SKEMA’s Global EMBA, we believe leadership today is no longer only about making decisions. It is about making sense, building trust, and mobilising people – across functions, borders, and perspectives – while staying grounded in ethics, responsibility, and long-term value creation.

With campuses established on five continents – North America, South America, Asia, Africa, and Europe – SKEMA offers a uniquely global learning environment. Our Global EMBA participants join a network and an ecosystem that mirrors the realities they face: multicultural teams, global value chains, fast-evolving technologies, and rising expectations from stakeholders.

Our approach combines strong business

foundations with a leadership journey that develops the whole leader:

- ▶ leading self (purpose, introspection, judgment),
- ▶ leading with others (influence, intercultural intelligence, negotiation, team dynamics),
- ▶ leading for impact (strategy, innovation, sustainability, transformation).

We also acknowledge a defining shift of our time: the rise of generative AI and data-driven decision-making. The Global EMBA equips leaders to harness these tools responsibly, to strengthen critical thinking rather than outsource it, and to drive transformation with discernment – not just speed.

At SKEMA, our programmes and international experiences are guided by five core values: acting for the world, striving for excellence, daring, embracing diversity, and making a long-term commitment. As a not-for-profit organisation recognised as serving the public interest, we are committed to developing leaders who can deliver results while contributing meaningfully to society, with respect for the cultural and economic contexts of each region where we operate.

SKEMA’s Global Executive MBA is ultimately about one ambition: enabling experienced leaders to elevate their impact – on their organisations, their people, and the world they help shape.”

Alice Guilhon,
Dean & Executive President,
SKEMA Business School

MISSION AND VALUES

SKEMA (School of Knowledge Economy and Management) is a global school that prepares the business talents of the 21st century — responsible, mobile, multicultural, entrepreneurs with abilities to manage information, data and knowledge.

A UNIQUE POSITIONING

Multi-accredited, the school is recognised worldwide for its research and its programmes of excellence.

A pioneer in the development of a proactive international strategy, SKEMA's positioning is based on the desire to change the traditional business school training model to better respond to new economic, societal and environmental challenges.

This unique positioning combines excellence, hybrid teaching and multicultural experience.

MISSION

Following the merger in 2009 of the two schools from which it originated (ESC Lille and CERAM in Nice), SKEMA Business School is experiencing an exceptional trajectory, demonstrating the relevance of its mission.

SKEMA Business School is a global research and higher education institution that trains talents committed to effecting sustainable transformation around the world, through seamlessly interlinking human-centric, management and data disciplines within global contexts, settings and frameworks.

With proven employability and deep skills that go beyond traditional managerial disciplines, these talents are able to understand and respond to new global challenges.

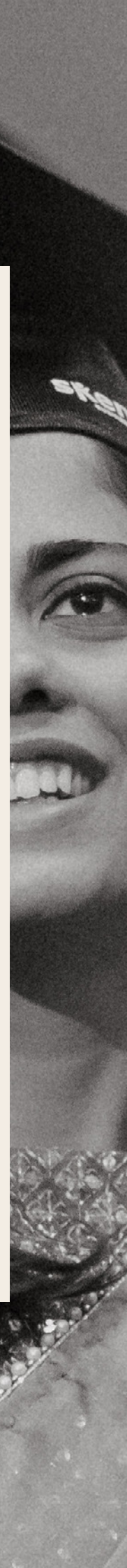
A STRONG DNA AND STRONG VALUES

SKEMA's DNA is a sum of convictions:

- ▶ Knowledge and information management to understand the world and its challenges.
- ▶ Excellence to create performance.
- ▶ Innovation and digitalisation, to develop teaching practices by combining reflection, experimentation and technology.
- ▶ Globalisation, to be exposed to multi-culturalism and learn to manage diversity.
- ▶ Commitment to creating a positive and sustainable impact.

Our **values** are in line with these convictions:

- ▶ Dare
- ▶ Act for the world
- ▶ Embrace diversity
- ▶ Make a long-term commitment
- ▶ Strive for excellence



Innovation and hybridisation of skills

Innovation is at the core of SKEMA's identity and has driven the school to create schemes and initiatives designed to change teaching practices by combining thinking, experimentation and technology.

To further consolidate its position as an avant-garde school, **SKEMA has launched four new "for business" schools**: a law school, an artificial intelligence school, a school in geopolitics and a design school. **With these creations, a sign of its transdisciplinary nature, SKEMA wants to go beyond management disciplines and respond to new global challenges.**

Faculty and Research

To meet the needs of the rapidly evolving market, SKEMA organised its teaching body around four academies — **globalisation, innovation, digitalisation and transformation** — addressing the conventional fields of expertise (strategy, finance, marketing, supply chain, HR, etc.) in a more transverse and global manner.

In terms of research, the School has set up **7 research centres** :

- ▶ Finance and Accounting Insights on Risk and Regulation (FAIRR)
 - ▶ Knowledge, Technology and Organisation (KTO)
 - ▶ Market Interactions (MINT)
- ▶ SKEMA Centre for Analytics and Management Science (SCAMS)
 - ▶ SKEMA Centre for Sustainability Studies (SCSS)
 - ▶ SKEMA Centre for Artificial Intelligence (SCAI)
 - ▶ SKEMA Centre for Global Risks (SCGR)

Entrepreneurship

With **SKEMA Entrepreneurs**, SKEMA capitalised on a long tradition of entrepreneurship in close collaboration with its locations. SKEMA Entrepreneurs is now present around the world, where it supports project sponsors and people founding and taking over companies, regardless of where they come from or where they plan to set up their business. Every year, more than 200 projects benefit from the support of the SKEMA Entrepreneurs teams.

Quality & Accreditations

SKEMA is multi-accredited — **AACSB, EQUIS, EFMD EMBA Accredited**. Its programmes are recognised in France (Visa, 'Licence' Degree, Master Degree, RNCP, CGE label), as well as in the United States (Licensing), Brazil (Certificação), China (Ministry of Education) and UAE (CAA, KHDA)

- ▶ Member of the Conférence des Grandes Écoles (CGE).
- ▶ Member of the Conférence des Directeurs d'Écoles Françaises de Management (CDEFM)

The Global Executive MBA is accredited by the French Ministry of Higher Education and Research, confers the Grade of Master, and is registered on the French National Register of Professional Certifications (RNCP), ensuring full academic and professional recognition.

Governance

The school's governance is structured around a Board of Directors and a General Assembly comprising members from the school's original territories in the north and south of France, as well as prominent alumni working in high-profile international companies, reflecting what constitutes our DNA (globalisation, innovation, digitalisation).

The strategic work of the Board of Directors is informed by the recommendations of two advisory bodies: the International Advisory Committee (IAC), the Research Advisory Committee (RAC) and the Strategic Orientation Committee (COS), each made up of influential people from the academic and corporate spheres.

International and French Rankings

#5 worldwide

Financial Times Best Executive MBA, 2025

▶ **Global Executive MBA**

#2 worldwide

Financial Times Masters in Finance (pre-experience programmes), 2025

▶ **MSc Financial Markets & Investments**

#19 worldwide

Financial Times Executive Education (custom programmes), 2025

▶ **Executive customised programmes for managers**

#4 in France

Le Figaro Executive MBA Ranking, 2026

▶ **Global Executive MBA**

#4 in France

Le Parisien Masters in Management, 2025

▶ **Grande École programme**



GLOBAL EXECUTIVE MBA

LEAD WITH PURPOSE IN THE AGE OF AI

**A world-class Executive MBA
for responsible, globally
connected leaders.**

The Global Executive MBA (Global EMBA), offered at SKEMA Business School, is designed for senior leaders who want to shape the future — not just adapt to it.

In a world transformed by artificial intelligence, sustainability imperatives, and geopolitical uncertainty, SKEMA's Global EMBA enables you to lead with clarity, purpose, and strategic foresight.

More than a degree, it is a transformative journey combining intellectual rigour, human development, and global exposure.



AT A GLANCE

Duration

Approximately 20 months



Format

Hybrid: Business management courses delivered online, Leadership modules delivered in person



Language

English



Residential Weeks

4 immersive weeks on SKEMA campuses (locations are confirmed annually)



Participants

Senior executives & high-potential leaders (average 15+ years' experience)



Elective course choices (online)

Entrepreneurship, Project Management, Advanced AI



KEY FIGURES

40

AVERAGE AGE

15

AVERAGE YEARS
OF PROFESSIONAL
EXPERIENCE/SENIORITY

20+

AVERAGE NUMBER OF
NATIONALITIES

A Transformational Value Proposition

SKEMA's Global EMBA shapes complete leaders for the age of intelligence — executives who can combine strategic mastery, human purpose, and technological fluency. You will:

- 1 Master the fundamentals of global business across interconnected disciplines.
- 2 Harness AI and data as drivers of responsible performance.
- 3 Integrate sustainability as a core strategic and ethical compass.
- 4 Develop advanced leadership capabilities grounded in authenticity and emotional intelligence.
- 5 Join a global community of visionary leaders, innovators, and changemakers.

“Leadership in the 21st century requires both IQ and EQ – and a clear sense of purpose,”

Anke Middelman

Programme Director
Global Executive MBA
SKEMA Business School

A DUAL ARCHITECTURE

MASTERY AND TRANSFORMATION

The Global Executive MBA is built on two complementary pillars that mirror SKEMA's vision: to reveal talents, unleash potential, and empower responsible leaders for a sustainable and intelligent world.

CORE BUSINESS FOUNDATIONS

FULLY ONLINE

12 interconnected courses, the grammar of leadership

Accounting Finance Business Strategy
Sustainability Data Management
Artificial Intelligence Human Resource Management
Organizational Design Supply Chain Management
Marketing Innovation Management
Macroeconomics

Finance and Business Strategy act as core business pillars, connecting insights across all business management disciplines. AI and Sustainability are woven into every course, from generative AI in Accounting to predictive finance, circular supply chains, and responsible innovation.

THE LEADERSHIP JOURNEY *FROM SELF TO SYSTEM*

IN-PERSON

8 modules during the four Residential Weeks

- ▶ Purpose & Inner Clarity
- ▶ Uncovering Your Unique Talents
- ▶ Leading Across Cultures
- ▶ Leading with Presence
- ▶ Leading Teams as a Process
- ▶ Leading Through Influence (Trust-based)
- ▶ Leading Across Generations (Inclusion & Sustainability)
- ▶ Leading Transformation (Courage & Resilience in Crisis)

PERSONALIZATION

Complement the core business courses with electives to tailor your learning to your strategic goals (Entrepreneurship, Project Management & Advanced AI).

Kick-off in Paris, France

Your journey begins with an immersive Residential Week to connect with your cohort and faculty, build trust, and set the foundation for transformational learning.



YOUR EXECUTIVE RHYTHM

YOUR 20-MONTH JOURNEY

A carefully sequenced experience designed to balance flexibility and immersion:

- ▶ **Online Core Courses**
Academic depth and rigour, accessible anytime, anywhere.
- ▶ **Residential Weeks**
Four immersive in-person modules across continents, each anchored in leadership themes.
- ▶ **The Capstone Project**
Apply learning to real-world strategic challenges.

WEEKLY SCHEDULE

outside Residential Weeks

- ▶ 2-3 online live sessions per week
- ▶ 2 hours per session
- ▶ Time zone: 1PM – 3PM CET
Some small-group sessions may be scheduled outside this time slot.

This rhythm ensures consistent engagement without disrupting professional responsibilities, designed for leaders balancing global roles, travel, and personal commitments.

LEARNING APPROACH

- ▶ **Expertise**
Expert faculty integrating research, business practice, and technology.
- ▶ **Applied Learning**
Case studies, live projects, and peer learning across industries and geographies.
- ▶ **Continuous Support**
Faculty mentoring, coaching, and a strong learning community that extends beyond the classroom.

*A continuous balance
of business mastery and
leadership transformation.*

CAPSTONE PROJECT

A strategic and purpose-driven final project

The Capstone is the culmination of the Global EMBA: a live, high-impact project addressing a real organisational or societal challenge.

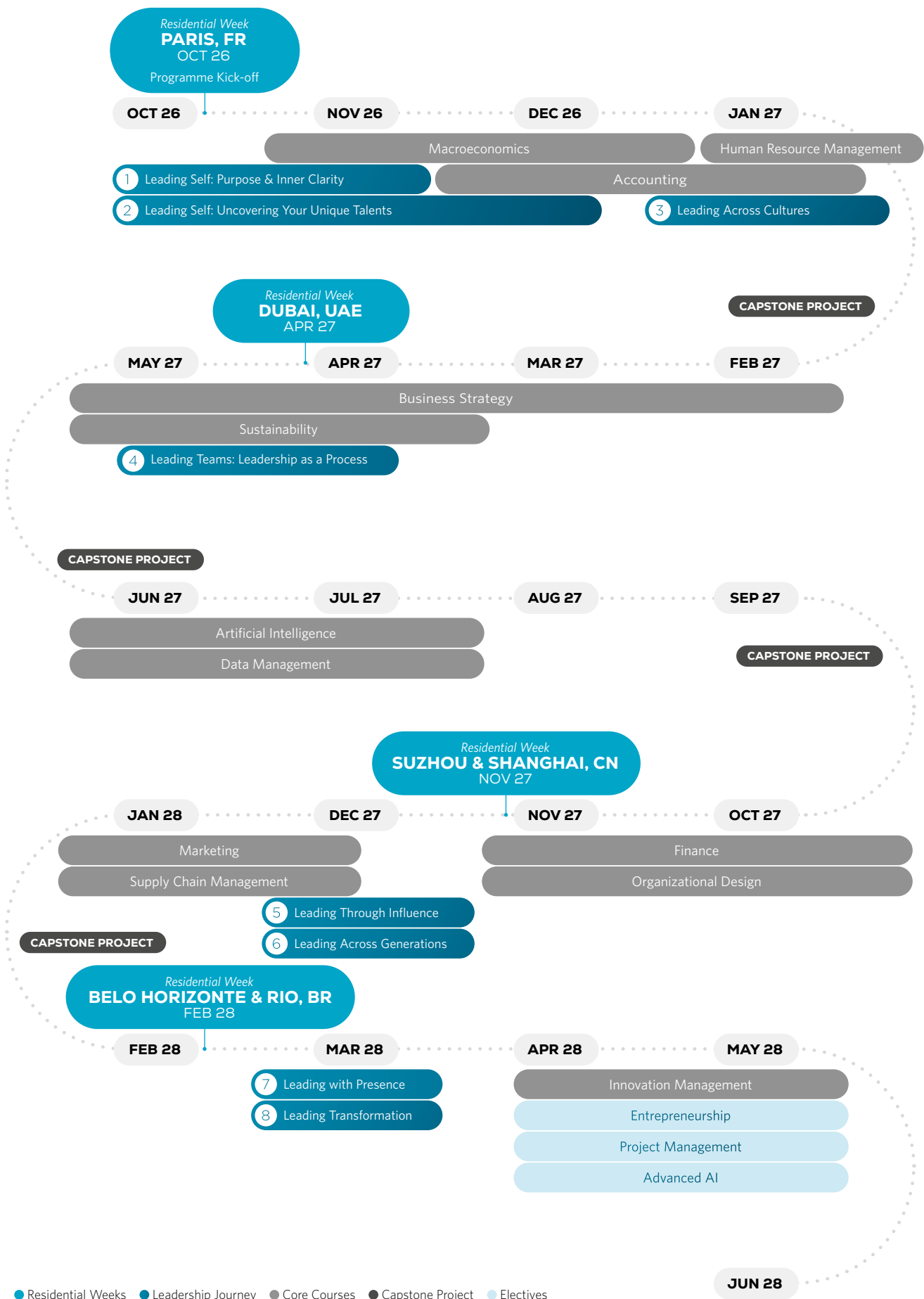
It allows you to:

- ▶ Integrate business insights across disciplines
- ▶ Apply analytical rigour and creativity
- ▶ Deliver strategic recommendations for tangible change

Each project is mentored by a faculty advisor or expert coach and concludes with a professional defence before an academic and industry jury.

INDICATIVE TIMELINE (20 MONTHS)

Exact sequence and locations confirmed annually



JUN 28

RESIDENTIAL WEEKS

GLOBAL IMMERSION AND CONNECTION

The Residential Weeks are the signature of SKEMA's Global EMBA — four transformative experiences held over 20 months in strategically chosen international locations (France, United Arab Emirates, China and Brazil*). Each Residential Week blends academic learning, leadership development, and cultural immersion.

Every Residential Week is a turning point – intellectually demanding, emotionally rich, and globally connected.

4
CONTINENTS

20
MONTHS

63,000
ALUMNI WORLDWIDE



Paris, FR

Leading Self: Purpose & Inner Clarity
Leading Self: Uncovering Your Unique Talents
Leading Across Cultures



**Belo Horizonte &
Rio de Janeiro, BR**

Leading Transformation
Leading with Presence

* Exact locations confirmed annually to reflect the global context

“The Residential Weeks were truly transformative.

Each week challenged me to step outside my comfort zone – engaging with new business environments, debating complex global issues and reflecting deeply on my own leadership approach. The intensity of these experiences – both intellectually and personally – strengthened my confidence as a leader and created relationships that continue to shape my professional path.”

Charles Koffi

Global EMBA Class of 2021
SKEMA Business School

DURING EACH RESIDENTIAL WEEK, PARTICIPANTS:

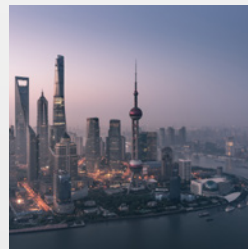
- ▶ Engage in experiential leadership modules with world-class faculty and practitioners.
- ▶ Participate in company visits and executive roundtables, exploring innovation, sustainability, and digital transformation in context.
- ▶ Attend cultural experiences that build global awareness and empathy.
- ▶ Network with SKEMA alumni, partners, and local leaders, creating meaningful professional connections.

The Result: An unparalleled combination of intellectual stretch, human connection, and global perspective.



Dubai, UAE

Leading Teams:
Leadership as a Process



Suzhou & Shanghai, CN

Leading Through Influence
Leading Across Generations



BENEFITS

FOR EXECUTIVES

“SKEMA’s Global EMBA gave me the tools and confidence

to continue growing, broaden my expertise, and challenge my thinking.

Beyond the academic knowledge, the programme connected me with a diverse community of professionals from around the world, expanding both my perspective and my network.

It reinforced my commitment to continuous development and equipped me to navigate new challenges with greater clarity.”

Emmanuelle Vrålstad
Global EMBA Class of 2022
SKEMA Business School

✓ Accelerate Your Career and Impact

The Global EMBA delivers tangible career acceleration. Graduates report significant advancement in seniority, influence, and strategic scope within months of completion. You gain the capacity to translate vision into action - for your organisation, your team, and your own leadership trajectory.

✓ Expand Your Global Mindset

Immerse yourself in a truly international ecosystem. Learn alongside peers from diverse industries and nationalities, and develop the cultural agility to lead across borders, markets, and generations.

✓ Reinvent Your Leadership

Through deep reflection, coaching, and experiential modules, you will evolve your leadership style - becoming more authentic, inclusive, and resilient. You will learn to lead not just people, but systems.

✓ Strengthen Strategic and Technological Mastery

You will understand how AI, data, and sustainability redefine competitiveness - and how to turn these into levers for innovation, performance, and long-term value creation.

✓ Join a Lifelong Community

Gain privileged access to SKEMA’s global network:

- ▶ 63,000+ alumni across 145 countries
- ▶ Executive events, mentoring, and continuous learning opportunities
- ▶ Access to SKEMA’s Talent & Careers and Executive Education ecosystems



Career Empowerment & Executive Coaching

A Lifelong Partnership for Professional Growth

SKEMA's Global EMBA accompanies you before, during, and long after the programme through a two-tiered professional development framework:



CAREER DEVELOPMENT & ALUMNI ENGAGEMENT

Access a full suite of executive resources:

- ▶ Personal branding and leadership positioning workshops
- ▶ Executive networking events across continents
- ▶ The global SKEMA Alumni network
- ▶ Continuous learning through masterclasses and short modules



PERSONALISED EXECUTIVE COACHING

All participants have the opportunity to work with a certified executive coach specialising in:

- ▶ Purpose-driven leadership
- ▶ Career transitions and strategic repositioning
- ▶ Cross-cultural management and global mobility
- ▶ Emotional intelligence and resilience

This unique coaching experience transforms professional development into a process of self-discovery and strategic empowerment.

FOR ORGANISATIONS

Empowering leaders who combine performance with purpose – and vision with responsibility.



Future-Ready Leadership

Your organisation gains leaders equipped to navigate complexity – capable of integrating sustainability, digital transformation, and human-centric strategy.



Immediate Return on Learning

The learning approach enables executives to apply theoretical concepts directly into their day-to-day roles.



Strategic Foresight and Responsible Growth

Through SKEMA's research-driven and ethics-oriented pedagogy, participants develop a strategic mindset aligned with sustainable business performance.



A Catalyst for Change

By empowering your executives to think systemically, collaborate across cultures, and embrace responsible innovation, your organisation strengthens its competitive resilience.

ADMISSIONS

ADMISSIONS PROCESS

Cohort Start: October 2026

- 1 Speak with our team for a tailored review of fit, timing, and objectives
- 2 Apply online with: Passport Photo
 Motivation Letter CV (English)
 Degree & transcripts 2 recommendation letters
- 3 Interview with Programme Director
- 4 Official admission notification

Ideal Candidates



Senior professionals and entrepreneurs with 8-15 years of experience



Proven leadership potential and international mindset



Strong academic or professional achievements



Proven English proficiency

Personalized guidance is available through the Admissions Team.

FEES AND FINANCING

Tuition

€60,000 (subject to annual revision)
Includes tuition, course materials, and Residential Week activities.
Travel and accommodation not included.

Financing Options

- ▶ Company sponsorship or co-funding
- ▶ Self-financing with instalment plans
- ▶ Limited scholarships for high-potential candidates:
 - Excellence
 - Women in Leadership
 - Diversity
 - Emerging Markets
 - Social Impact & Sustainability



SKEMA BUSINESS SCHOOL

Brazil Canada China France South Africa UAE USA



MORE INFORMATION



CONTACT

executive.mba@skema.edu
www.skema.edu/en/executive-education

WWW.SKEMA.EDU

skema
BUSINESS SCHOOL