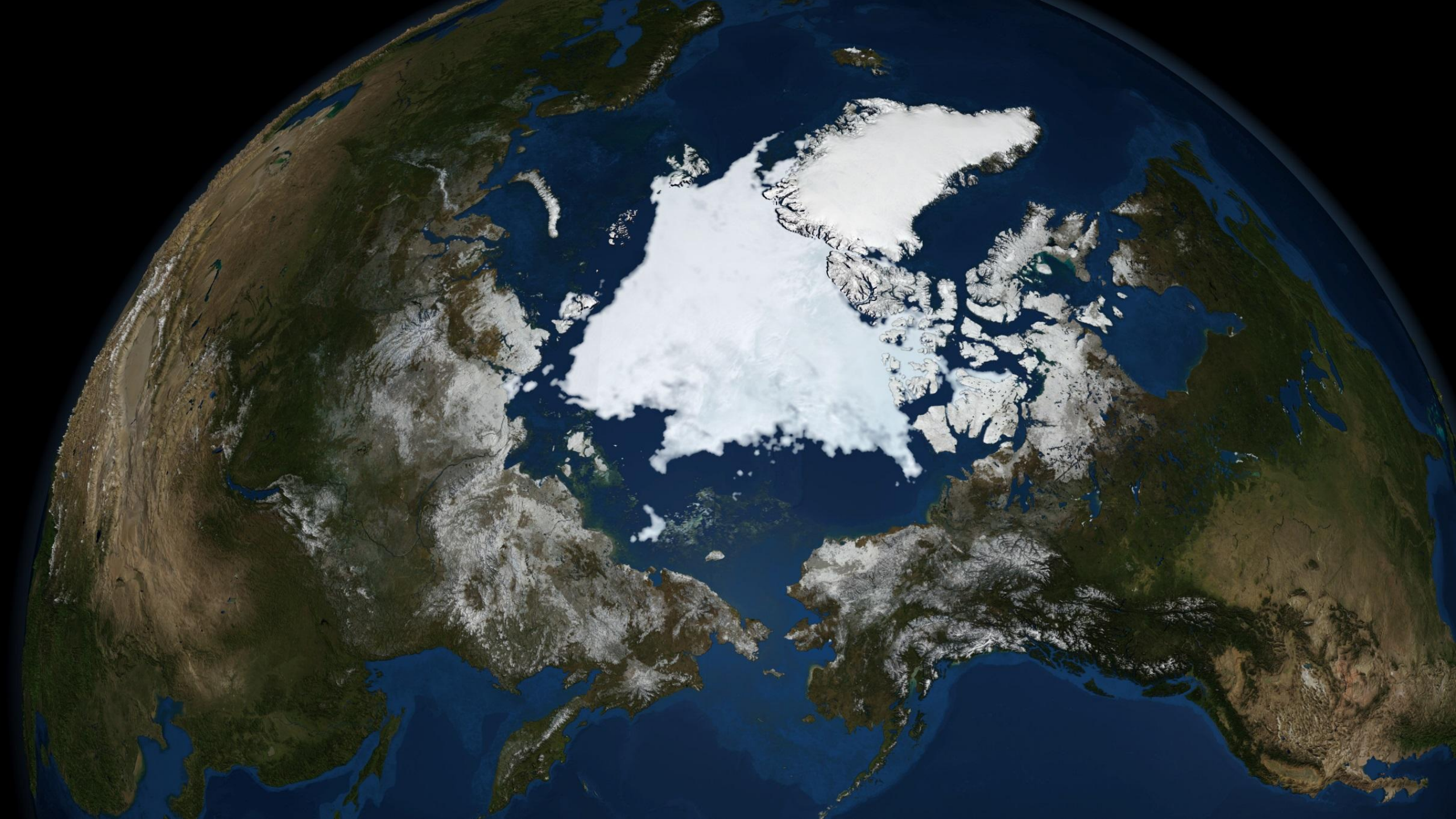




Heidi Sevestre

Deputy Secretary, Arctic Monitoring
and Assessment Programme





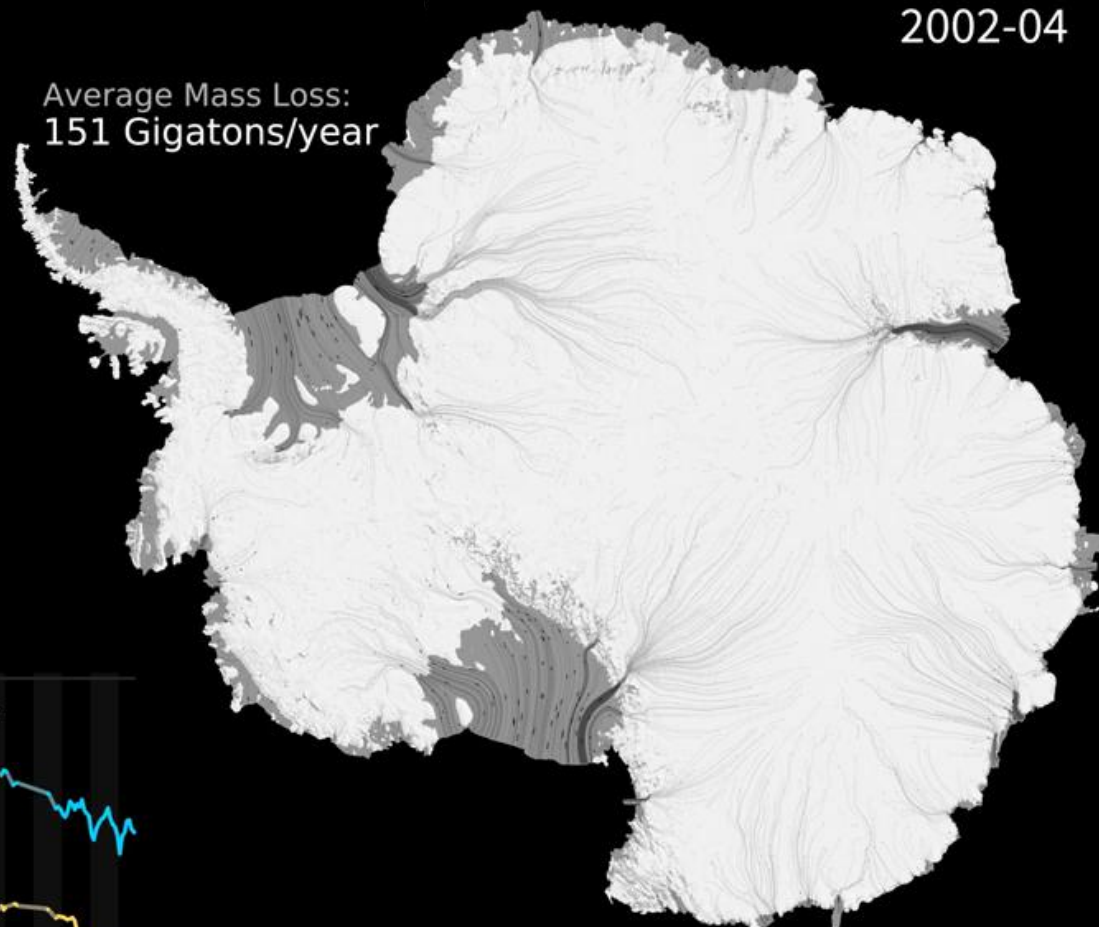




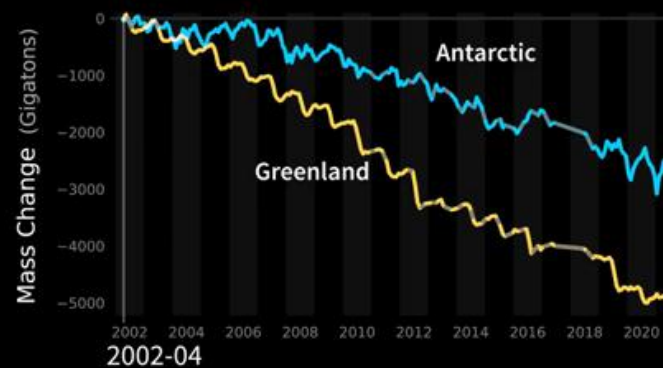
Average Mass Loss:
277 Gigatons/year



Average Mass Loss:
151 Gigatons/year



2002-04





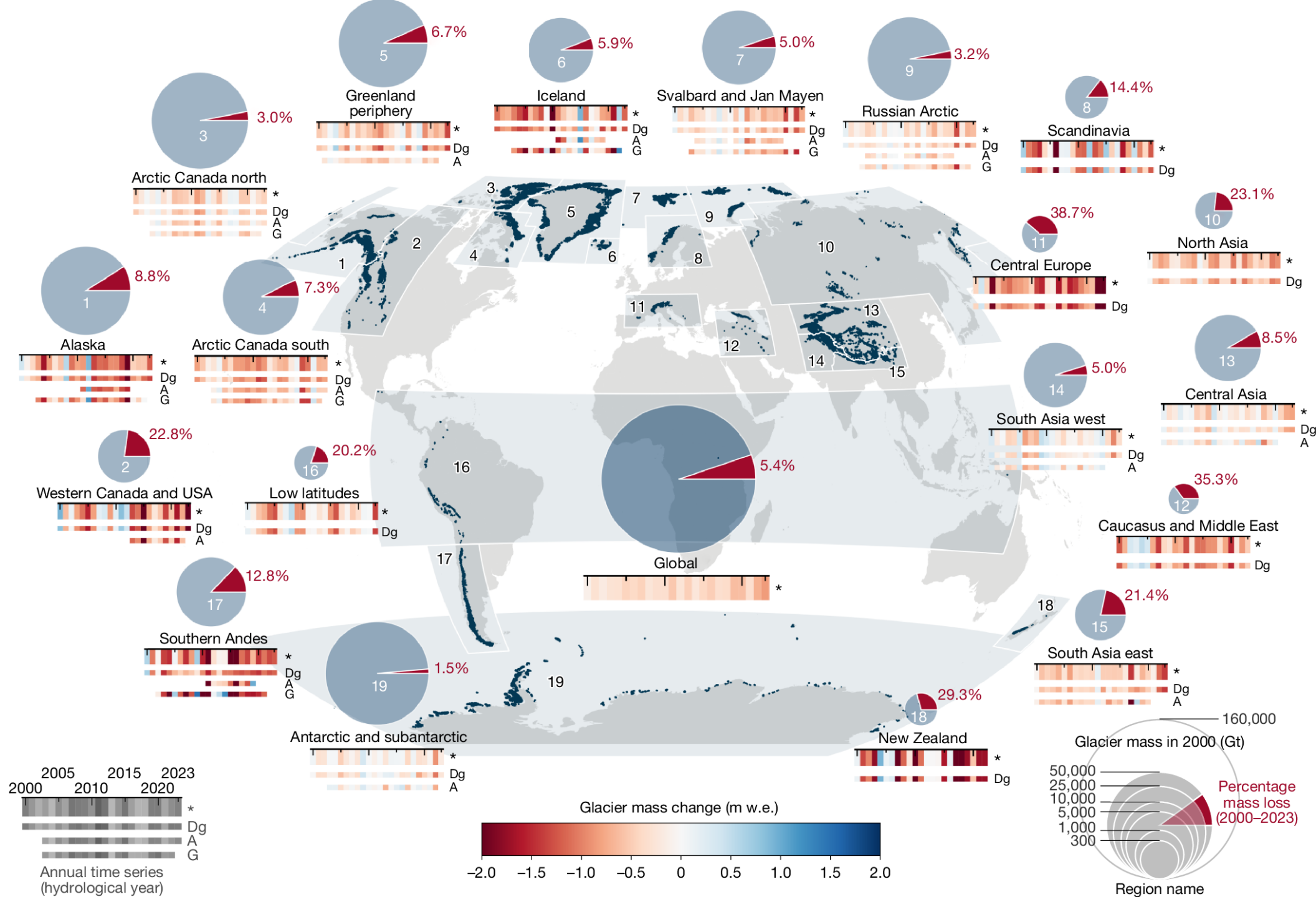
30 millions

Tons of ice

Every hour

Source: Greene et al., Nature, 2024

Image: Enrico Van der Loo.



Nice, France

Cathédrale Sainte-Réparate de Nice (Nice Cathedral)

CLIMATE
CENTRAL

Present-day sea level



Nice, France

Cathédrale Sainte-Réparate de Nice (Nice Cathedral)

CLIMATE
CENTRAL

Unavoidable future sea
level rise due to past carbon

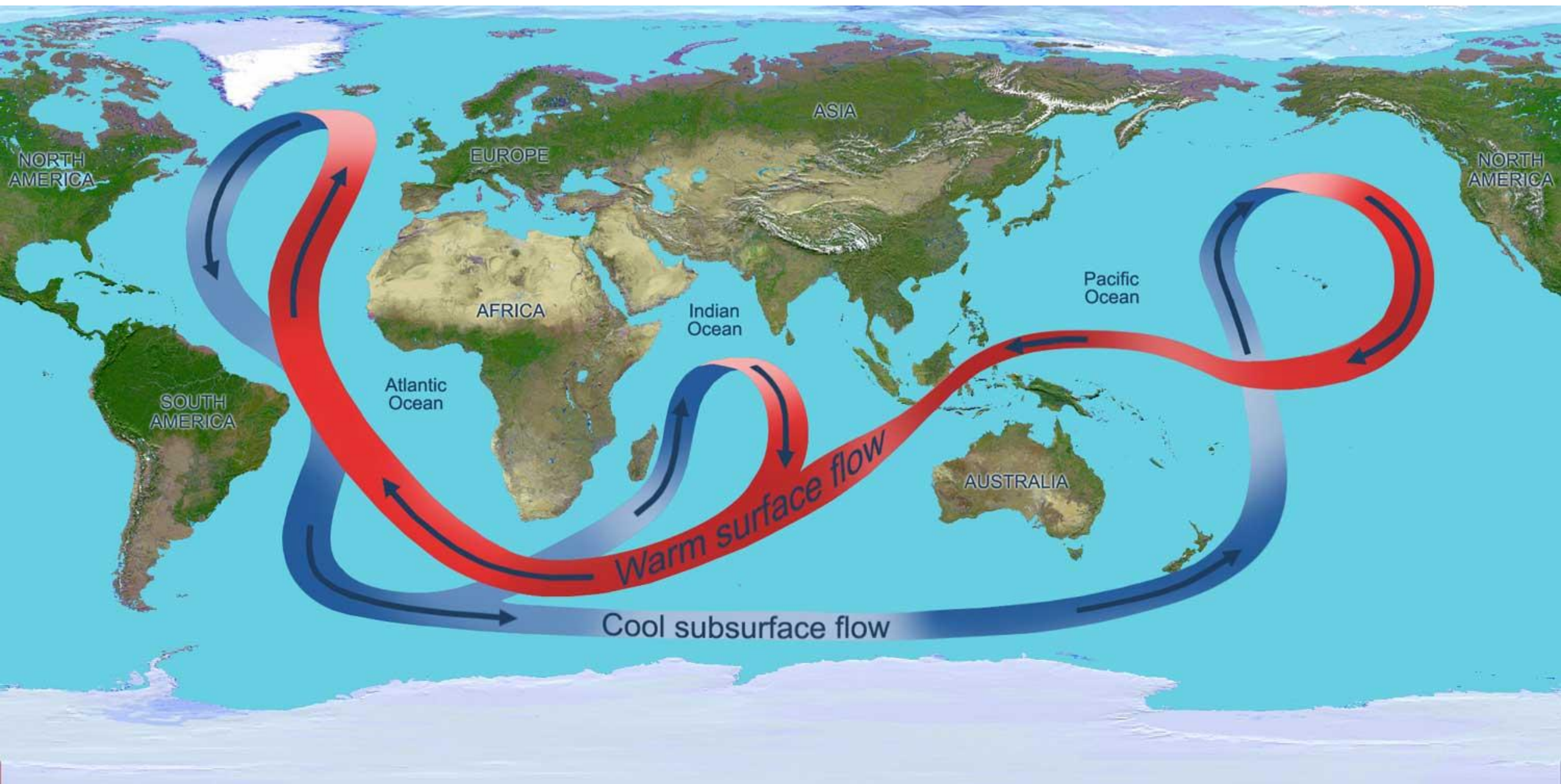


Nice, France

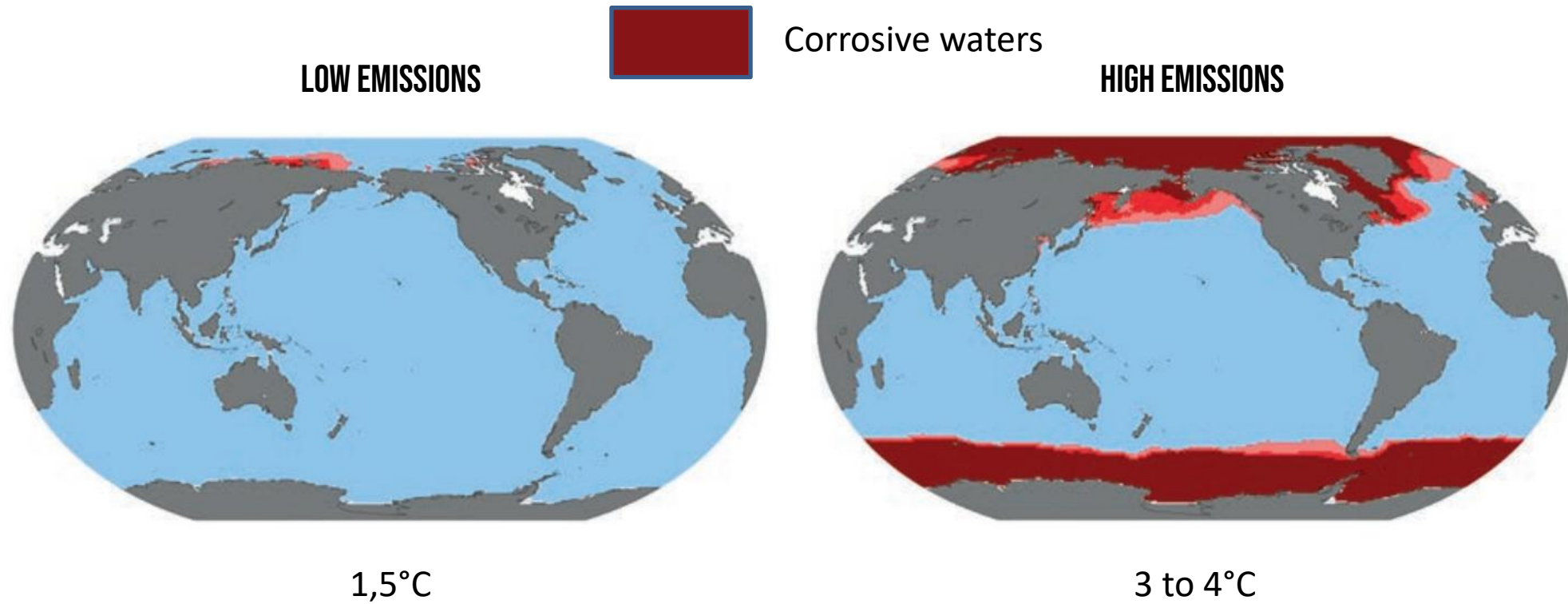
Cathédrale Sainte-Réparate de Nice (Nice Cathedral)



**Multi-century sea level rise
after 3.0°C of global warming**

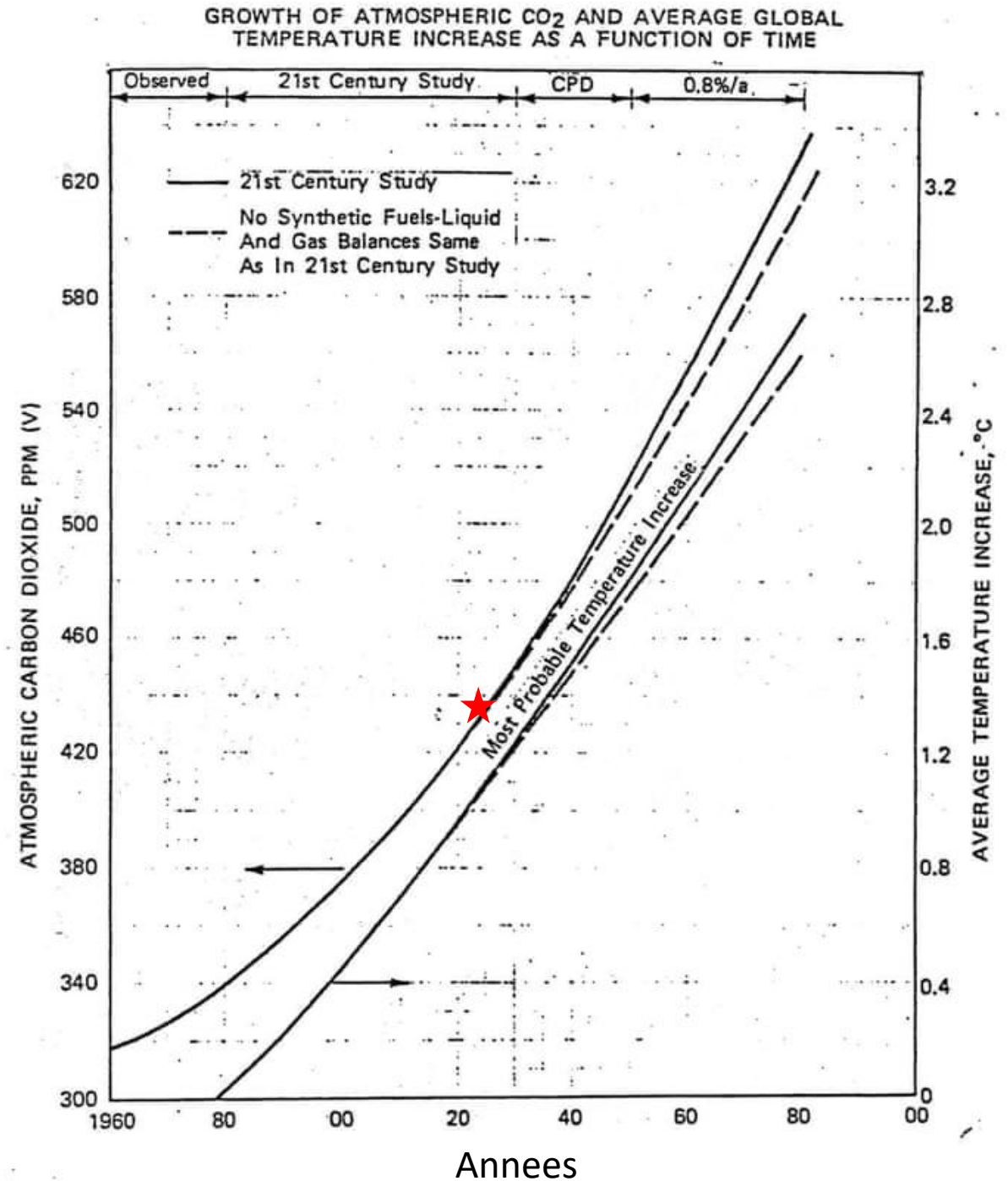


OCEAN ACIDIFICATION

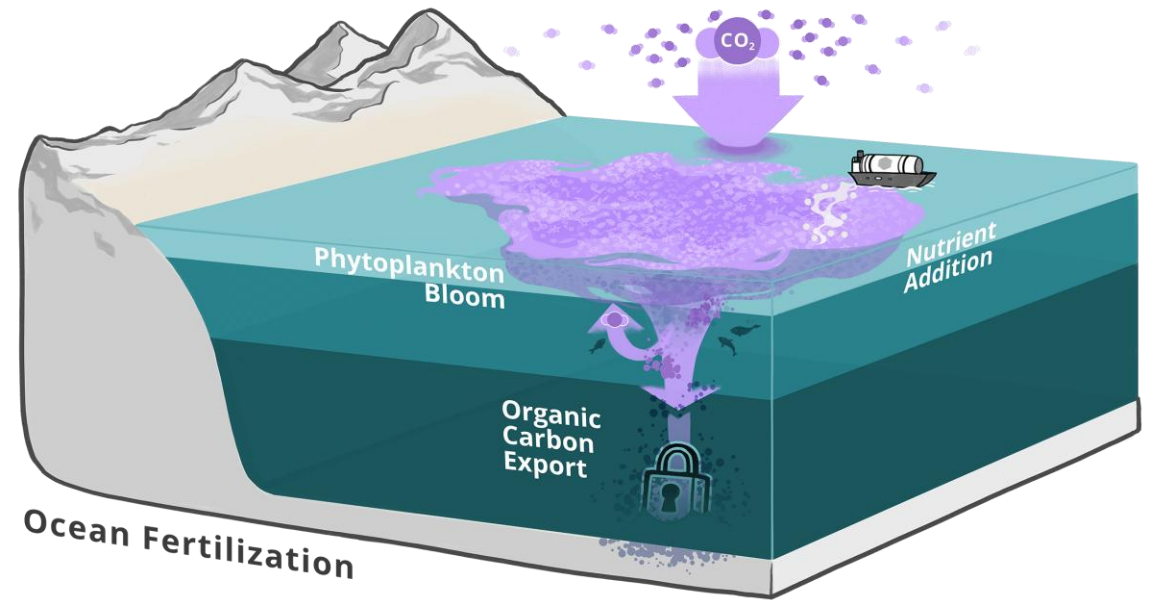
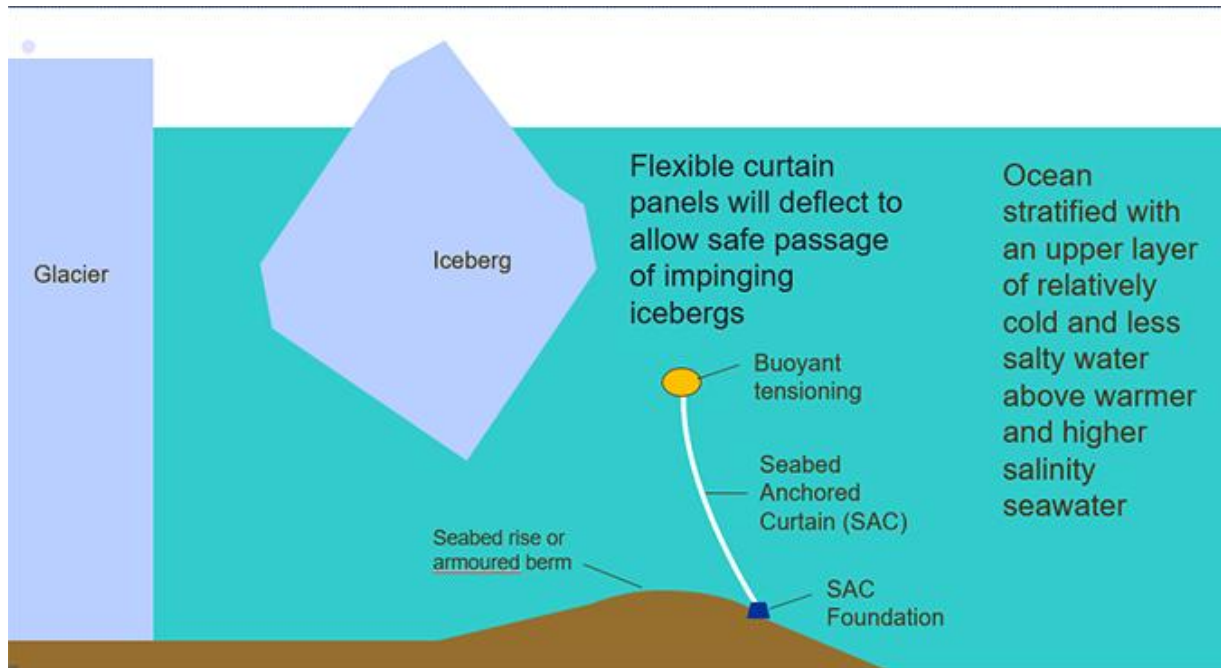


The Fossil Fuel Connection

There is no doubt that increases in fossil fuel usage are aggravating the potential problem of increased CO₂ in the atmosphere. Technology removal or only 50% of the CO₂ would double the cost of power generation.



Maladaptation – “climate repair”



We cannot negotiate with the chemistry of acidification.
We cannot negotiate with the melting point of ice.
But we can change our choices.

