



Inspire
coastal challenges



Miguel MIRANDA

AIR Centre



European Pavilion

Digital Ocean

Nice | France
2 - 13 JUNE 2025

FAIR and CARE



Inspire
coastal challenges

Stressors

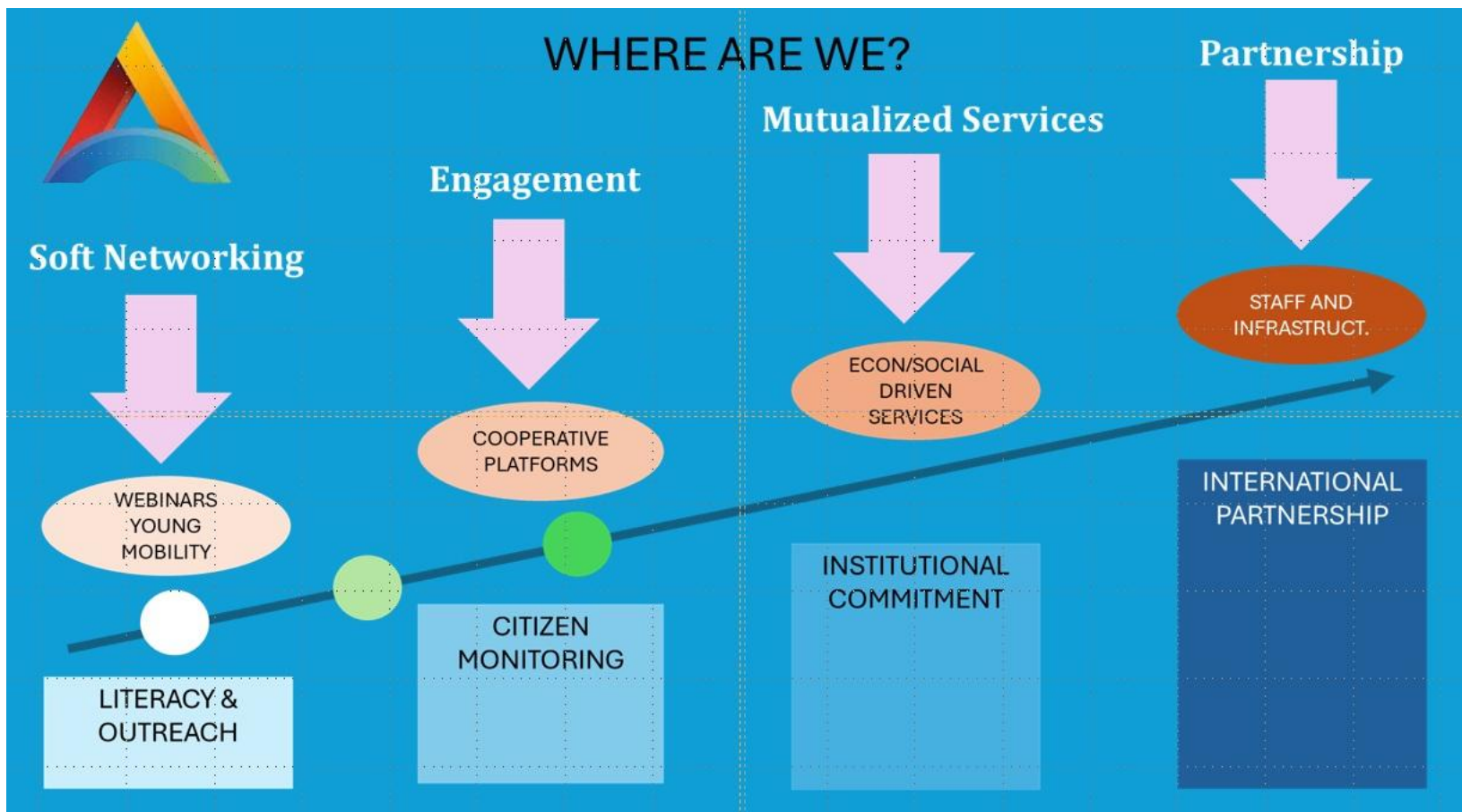
Stressors	Impacts	Sensorize Satellite Imagery Artificial Intelligence	Engage Strengthen National Organizations	Mutualize Cooperative Monitoring Systems	Humanize Give voice to real people
1. Internal and external migrations	Housing	Satellite	Space Agencies	Local Authorities	Time Evolution
	Leisure Areas	Satellite	Space Agencies	Local Authorities	Time Evolution
2. Expansion of construction area	Wetlands	Satellite	Space Agencies	Marine Institutes	Time Evolution
	Ecosystem Services	Satellite / In Situ	Marine Institutes	Marine Institutes	Ecological Indicators
	Biodiversity	Satellite / In Situ	Marine Institutes	Marine Institutes	Ecological Indicators
3. Environmental Degradation	Pollution	Satellite	Space Agencies	Marine Institutes	Ecological Indicators
	Drinkable Water	In Situ	Environmental Ag	Marine Institutes	Ecological Indicators
	Human Health	Satellite / In Situ	Health Authorities	Local Authorities	Early Warning
4. Increasing Natural Hazards	Coastal Retreat	Satellite	Space Agencies	Environmental Ag	Early Warning
	Flooding	Satellite	Space Agencies	Environmental Ag	Early Warning
	Technological Hazards	Satellite / In Situ	Civil Protection Ag	Environmental Ag	Early Warning
5. Cultural Normalization	Social Memory	In Situ	Government?	Local Authorities	Preserve Documents
	Cultural Identity	In Situ	Government?	Local Authorities	Preserve Oral Testim
6. Destruction of traditional economy	Wealth	In Situ	Marine Institutes?	Marine Institutes?	Economic Indicators
	Migration	In Situ	Government?	Local Authorities	Economic Indicators

Migration to coastal areas exacerbated already existing natural and man-made risks, saturated infrastructures and generally led to a low quality of life.





Deeper engage of local communities, based on a better understanding of environmental processes, and their relationship with communities' interests, culture and values.



We must evolve from “soft networking” to closer and more equitable forms of cooperation. Cooperative Platforms can be an answer to promote real engagement and direct participation of communities.



Inspire

coastal challenges

Data are the most important « raw material »
Every observation is an asset
FAIRness is increasing but is still highly asymmetric
CARE for responsibility towards communities and people and gain from their deeper engagement

