



Inspire
coastal challenges



Cristele CHEVALIER

IRD



European Pavilion
**Digital
Ocean**

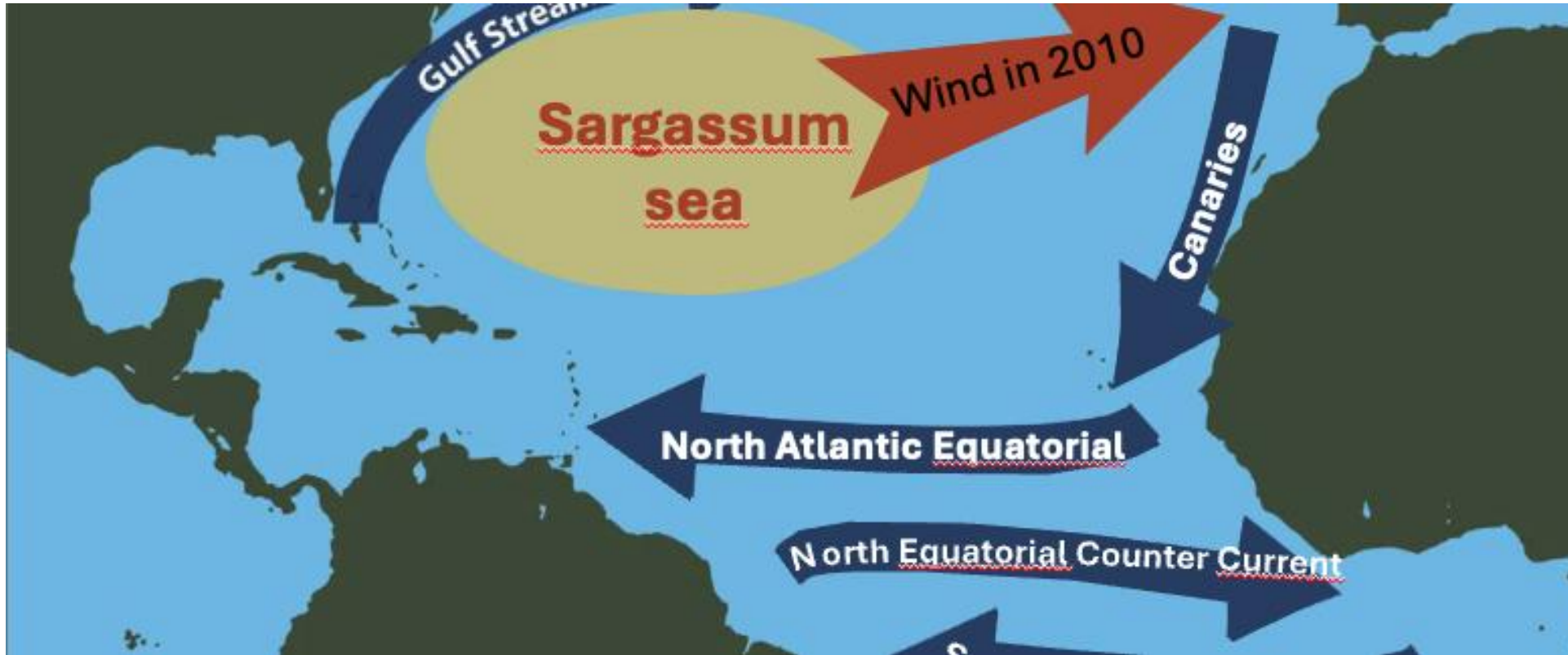
Nice | France
2 - 13 JUNE 2025

Sargassum monitoring



Cristele Chevalier, A. Minghelli, J. Descloîtres, A. Minghelli, S. Barbier, L. Berline, L. Schamberger, M. Chami, C. Chevalier, A. Costa da Silva, L. Courtrai, P. Daniel, W. Daniel, M. Debue, J. Descloîtres, J.-R. Gros-Désormeaux, T. Guinaldo, M. Laval, J. Lepesqueur, C. Lett, C. Nicolas, A. Molcard, P. Palany, W. Podlejski, A. Salazar, S. Saux-Picart, R. Villier ...

Sargassum origin



Originating from the Sargasso Sea, these algae emerged further south in 2009-2010, likely due to unusual westerly winds observed during that winter.



Sargassum origin

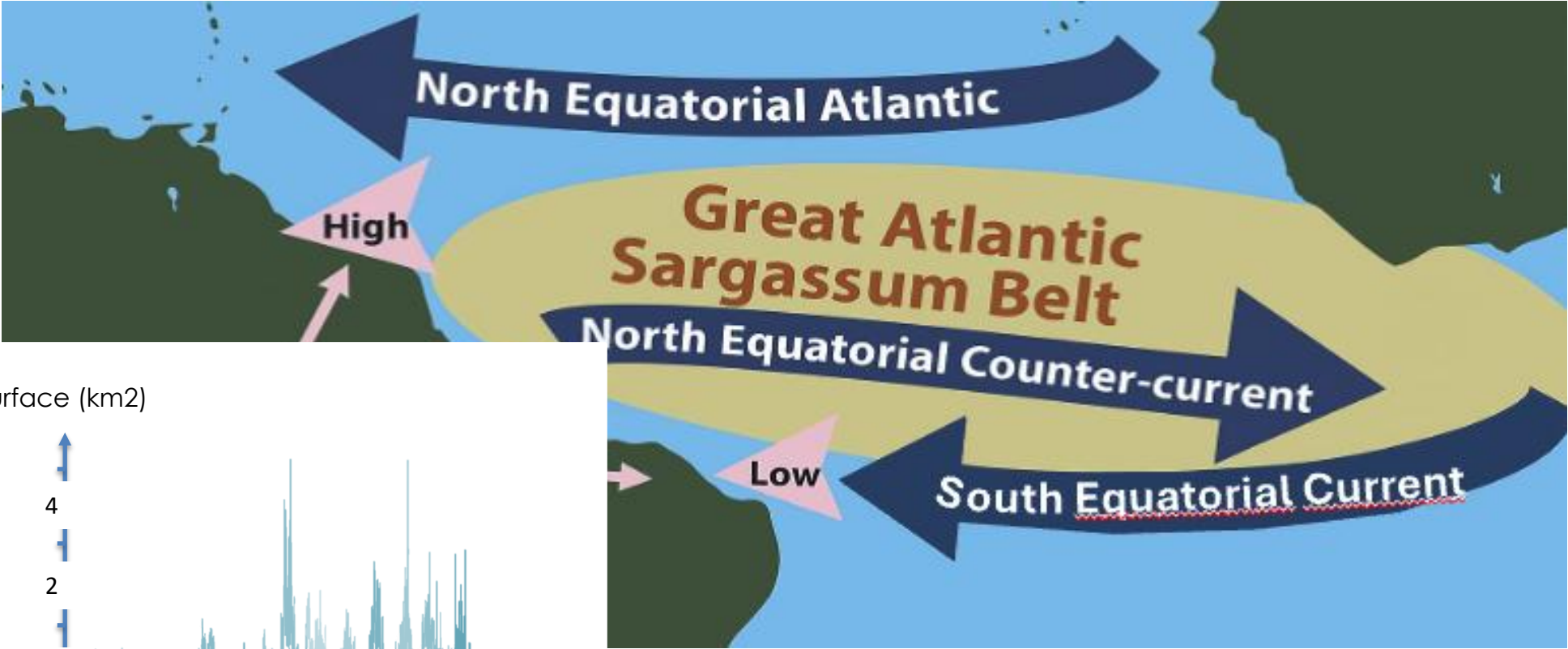


Now, these algae remain in the Great Atlantic Sargassum Belt

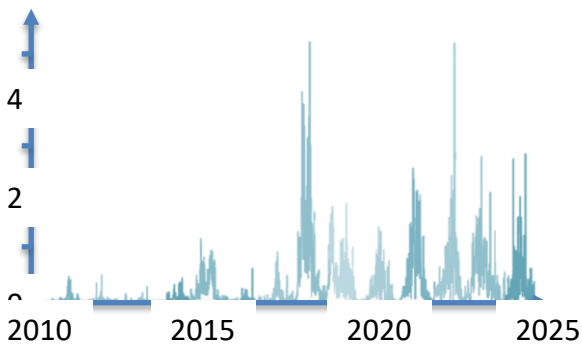
Driven by wind and current they go from east to west of the Atlantic



Sargassum origin



Surface (km2)



Area covered by Sargassum in the western Atlantic (Météo France)

and their abundance increased



Sargassum impact



Massive sargassum stranding on the coast



Sargassum impact



Massive sargassum stranding on the coast ...

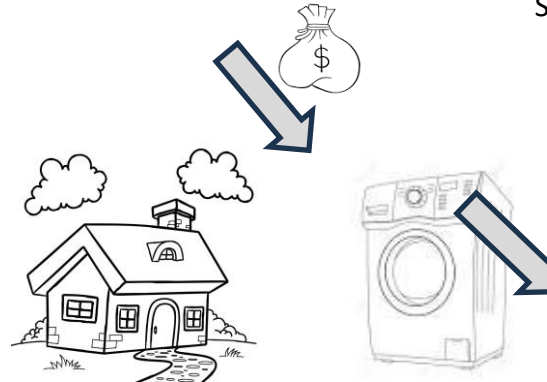


mangroves

Environnemental damage



Sanitary damage



Economical damage

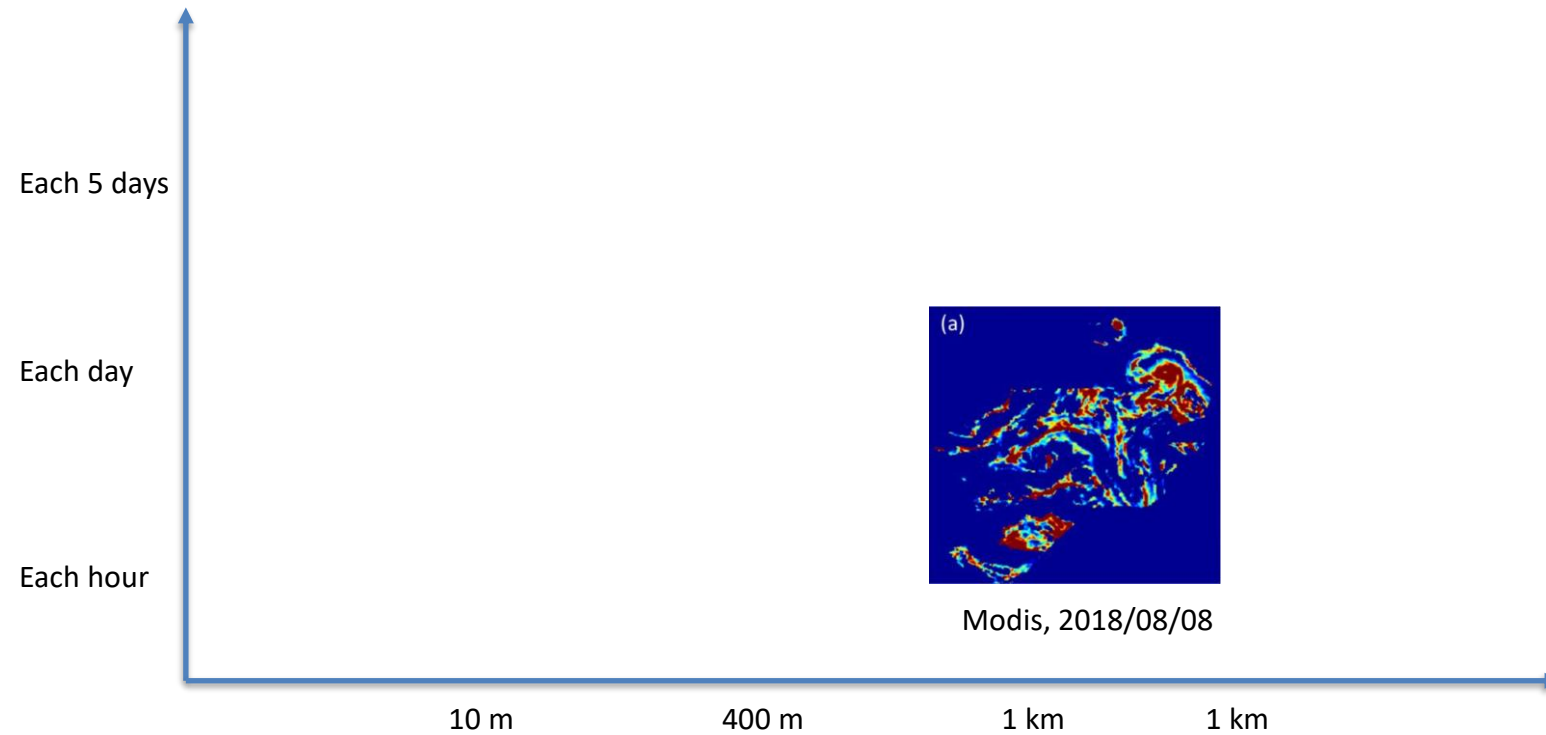
... They induce different damages



Inspire
coastal challenges



Monitoring their distribution



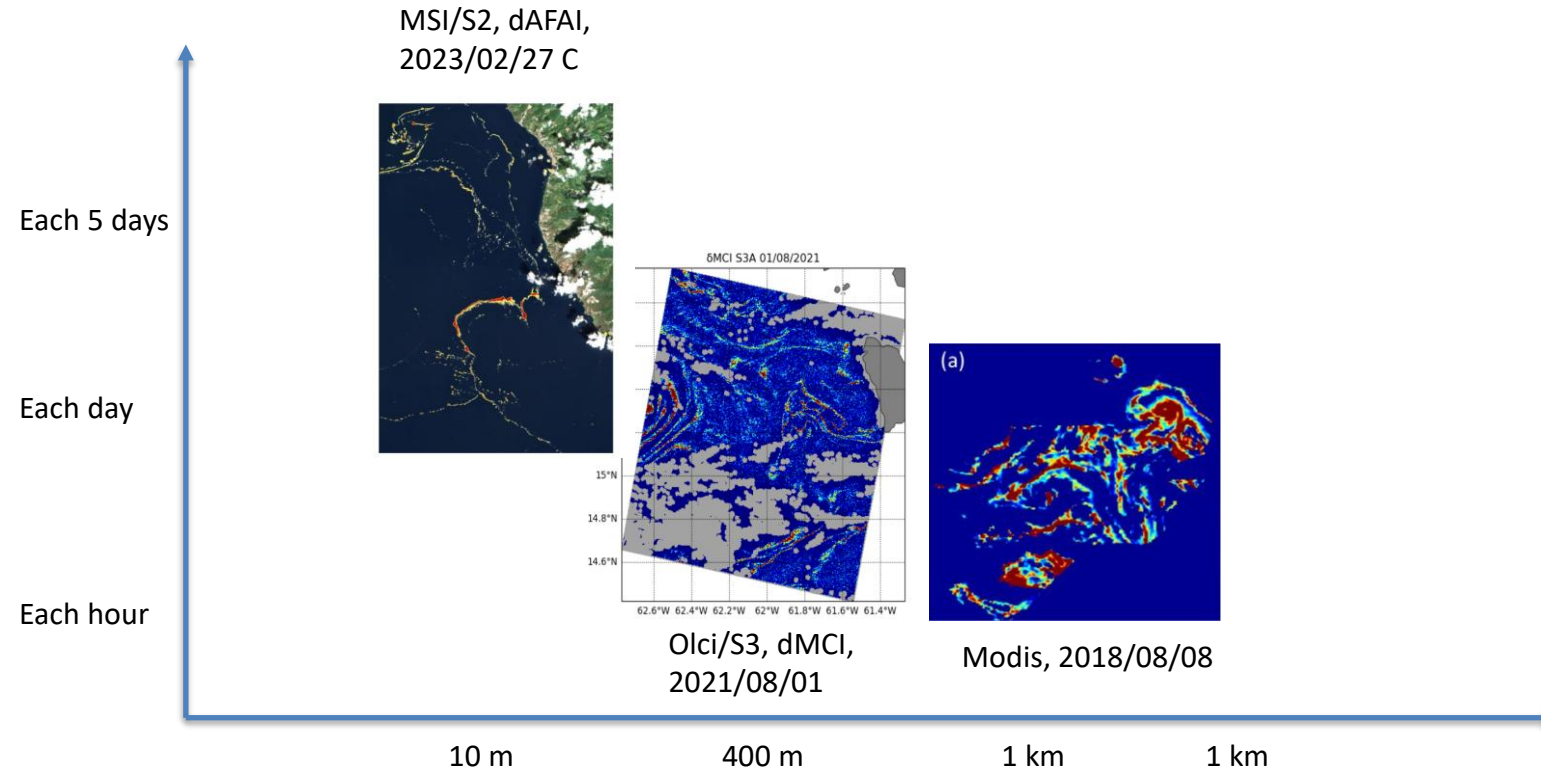
Observation from Satellite



Inspire
coastal challenges



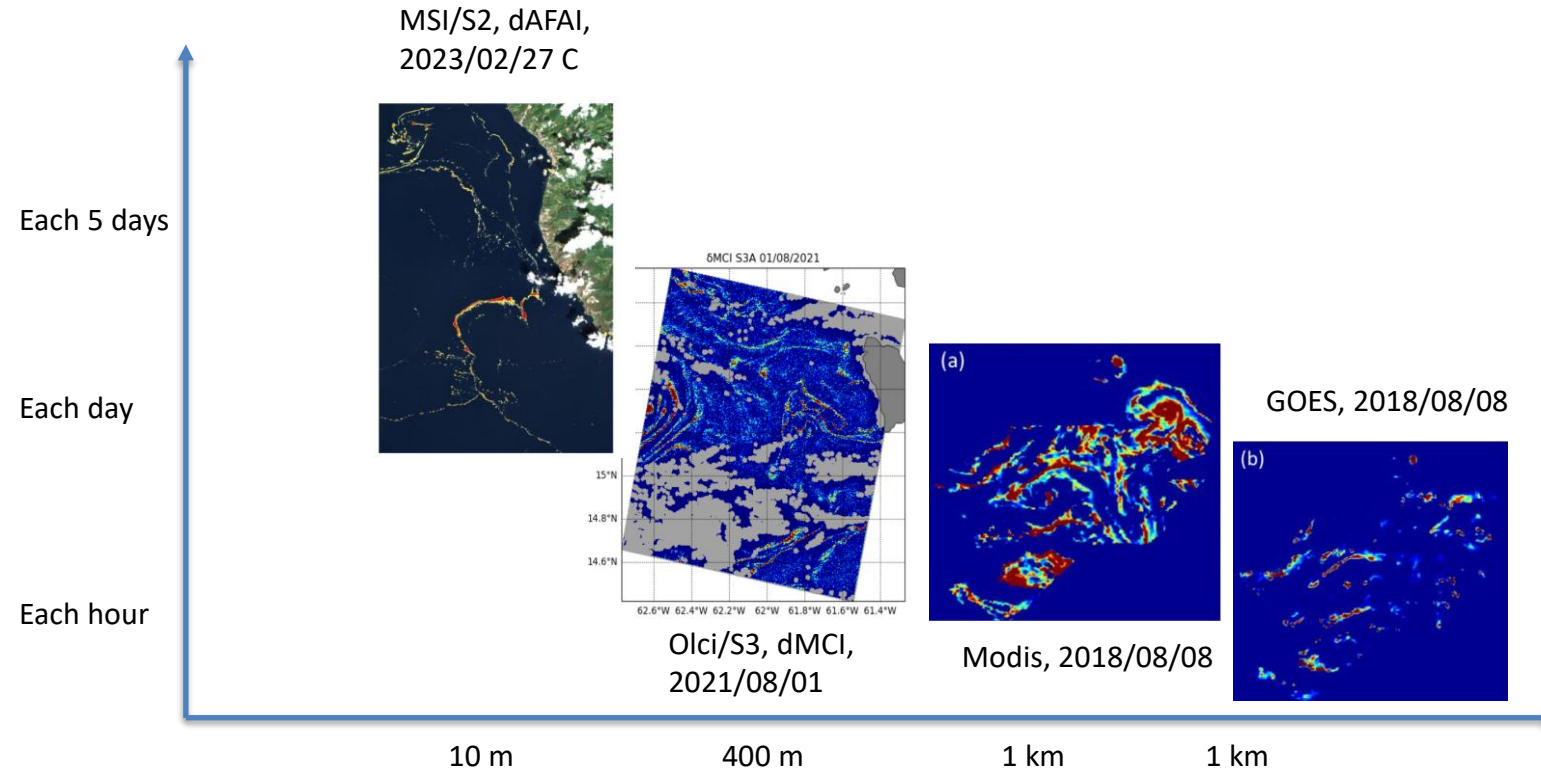
Monitoring their distribution



Observation from Satellite



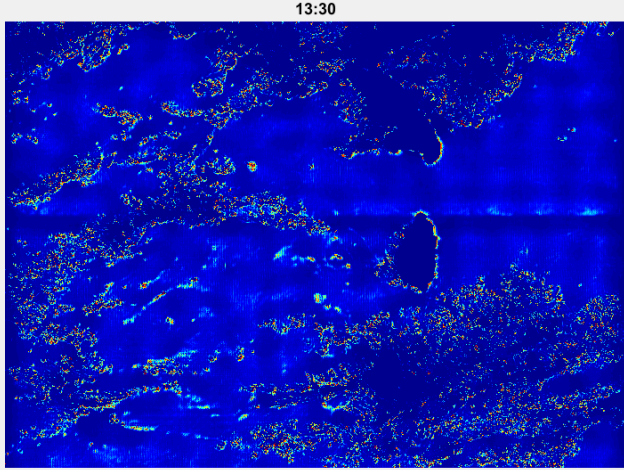
Monitoring their distribution



Observation from Satellite



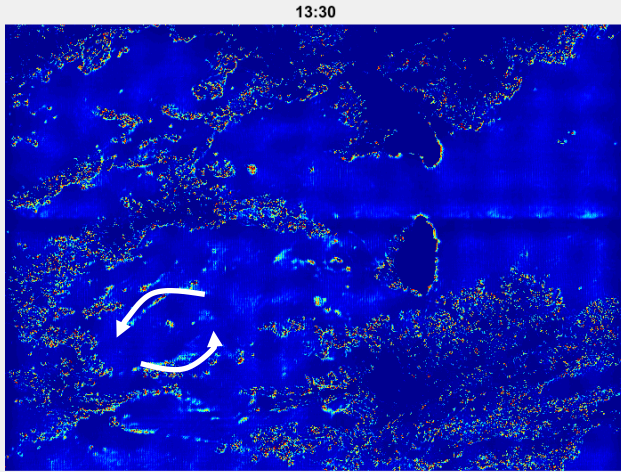
Monitoring their drift



Observation from Satellite

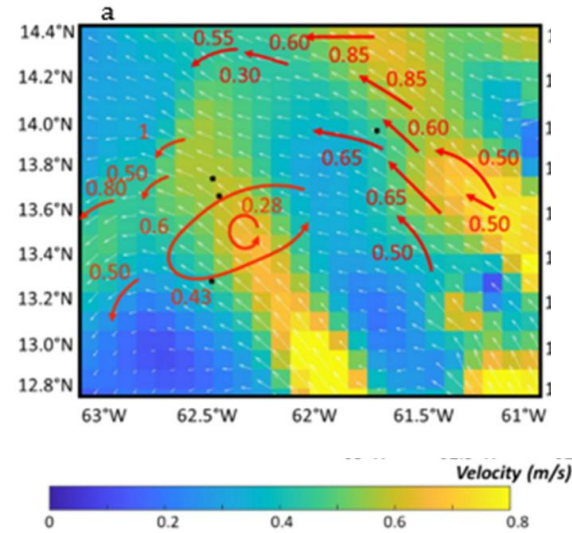


Monitoring their drift



Goes with Eddy

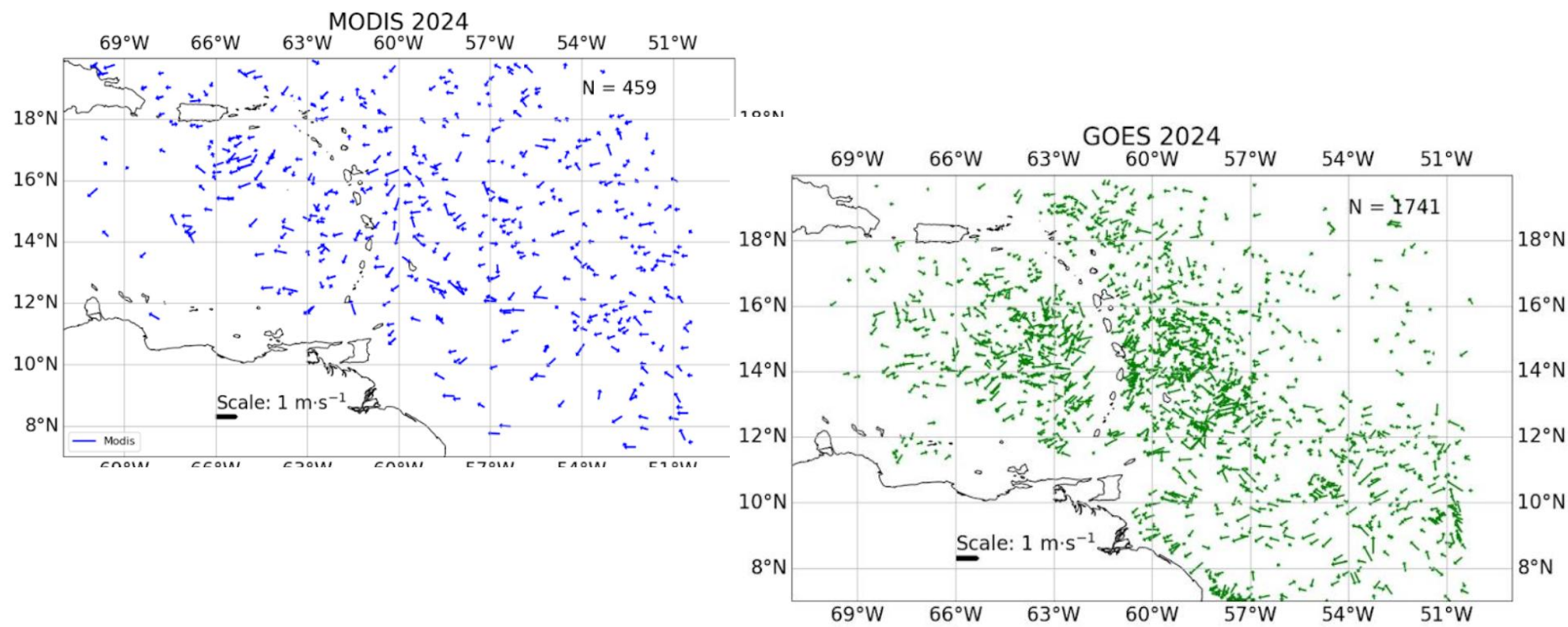
Observation from Satellite



Modeled surface velocity and drift of aggregations derived from GOES



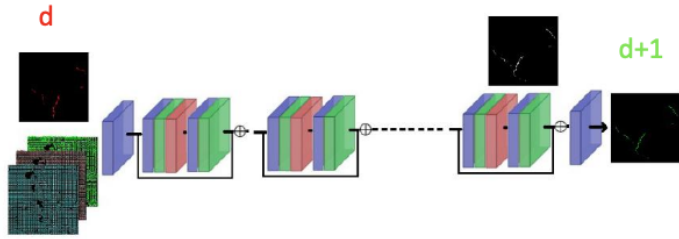
Contribution to model



Velocity Estimation from satellite

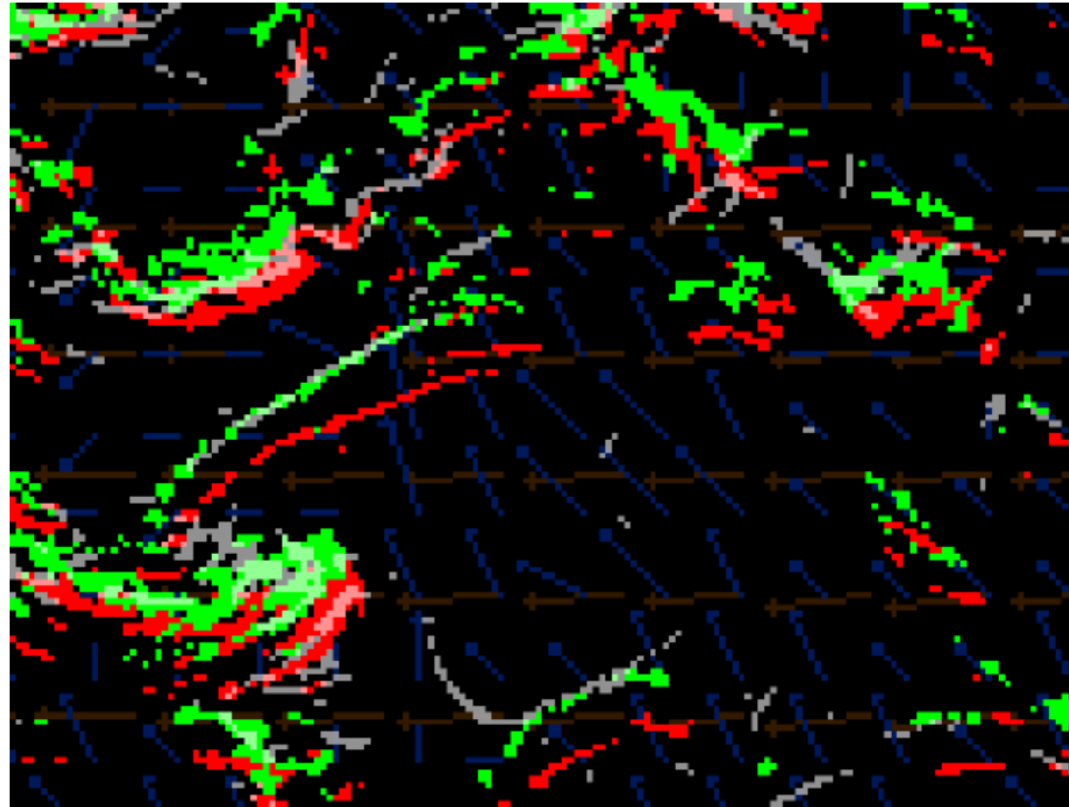


Drift Forecasting



Wind, current and waves

d
d+1
Validation



Use IA to estimate forecasting





Inspire

coastal challenges

- 4 databases (from 2010 – 2025) of sargassum observed from satellite images is soon available
- These database are useful to improve the drift forecasting

Furthermore :

- A useful in situ campaign to validate the products (detection, abundance, velocity and biomass)
- Citizen Science is also developed to help in this detection and forecasting

