



Photo by Daniel Hentz  
© Woods Hole Oceanographic Institution

# Turning Down the Volume: Protecting Ocean Life From Noise Pollution

**Macapia, Amelia**

Woods Hole Oceanographic Institution



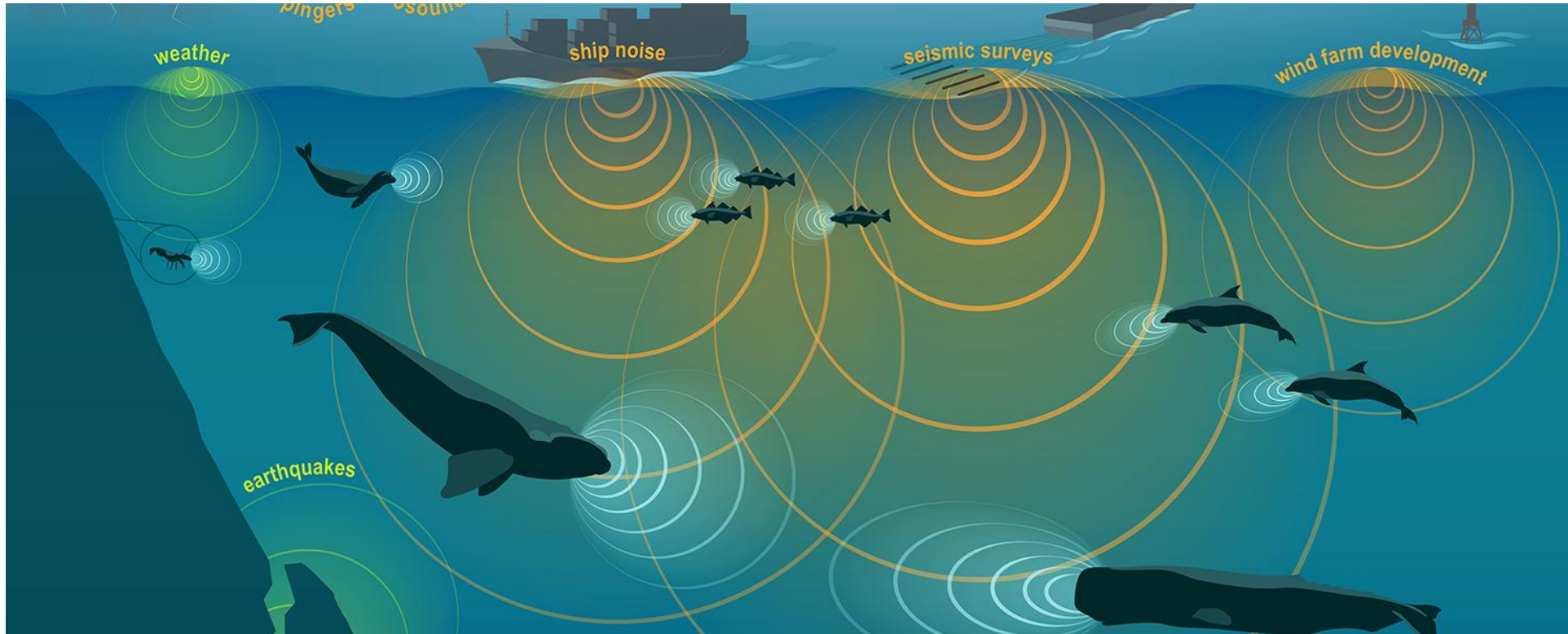
WOODS HOLE  
**OCEANOGRAPHIC**  
INSTITUTION



**ECOP**  
Early Career  
Ocean Professionals



# A Rapidly Industrialized Ocean



NOAA Fisheries, February 18 2025

- Sound travels up to **5x** faster underwater.
- Manmade noise is a *transboundary pollutant*, affecting all marine life regardless of borders.



Inspire  
marine pollution





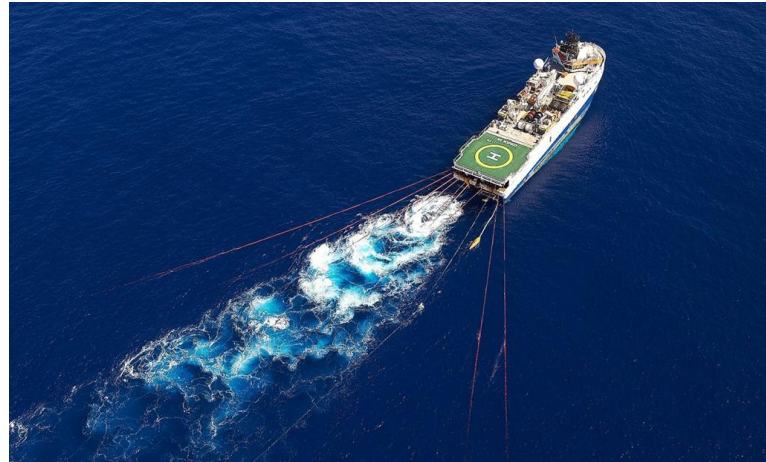
**March 2024 | European Commission**



**20%**

**Continuous Noise**

- Maximum marine area exposed annually



**20% / 10%**

**Impulsive Noise**

- Daily/Annual habitat exposure limits



**Legally Enforceable**

**Binds Member States**

- Foundation for global expansion





# The Economic Case for Action

- **Fuel Savings:**
  - Up to 30% reduction in fuel consumption from speed limits
- **Noise Reduction:**
  - 6 - 8dB reductions from Maersk retrofits
- **Climate Co-Benefits:**
  - 13% shipping emissions cut from speed reductions
- **Business Case:**
  - Energy savings create client value



# Ready-to-Scale Solutions



## Immediate Actions

Speed limits for commercial vessels	Port-based noise management	Enhanced Environmental Impact Assessments
---	-----------------------------------	--

## Regulatory Frameworks

International Maritime Organization action on global standards	Exclusion zones & ramp- up protocols	Transboundary monitoring networks
---	--	---



# Closing the Gap

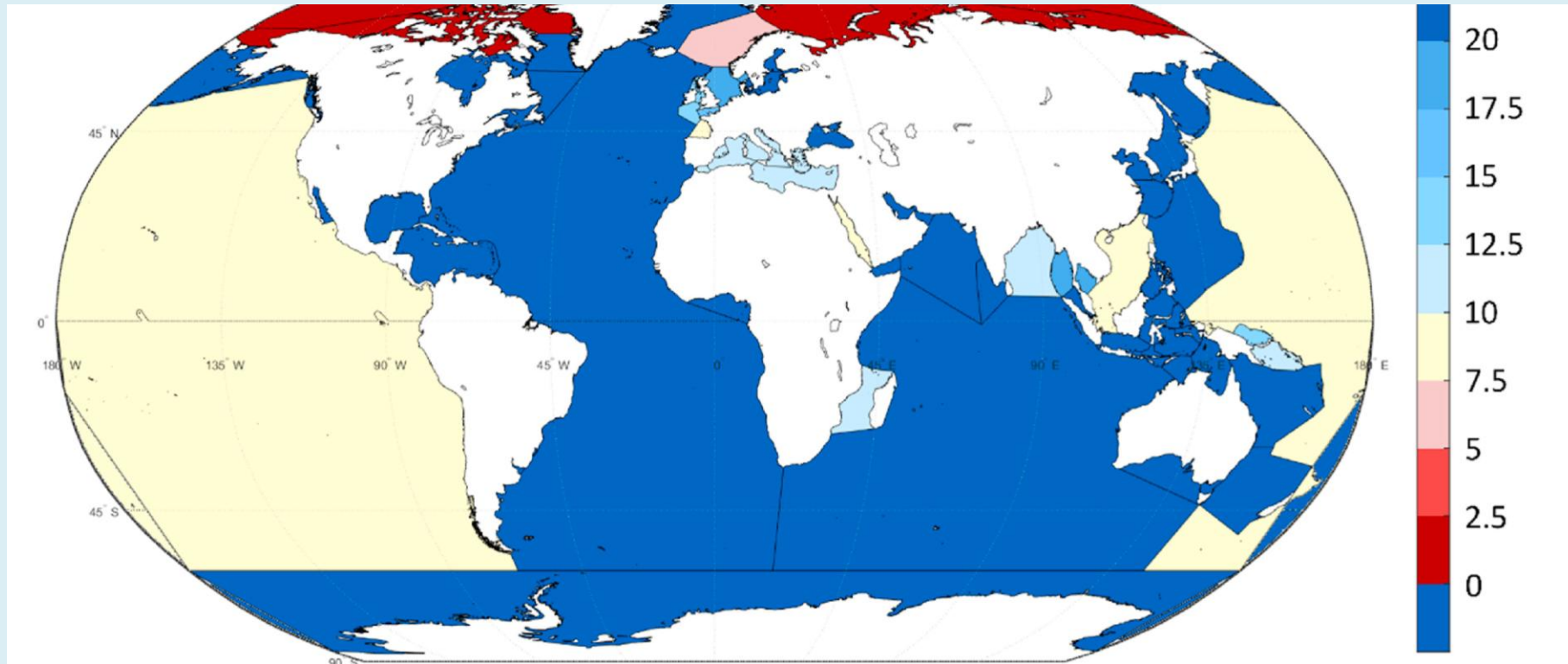


Figure 6 from Jalkanen et al., 2022, Environmental Pollution

**1. No Global Noise Thresholds**

**2. Insufficient EIA Integration**

**3. Limited Enforcement**

# The Economic Opportunity



**Fisheries & Ecotourism  
Value at Risk**



**Climate + Diversity + Economic  
Co-Benefits**



## Three Immediate Policy Priorities:

### **Expand EU Limits Globally**

- Through International Maritime Organization leadership and bilateral agreements

### **Mandate Vessel Speed Reductions**

- In sensitive marine areas with economic incentives

### **Integrate Noise Assessments**

- Into all maritime development planning



A photograph of three orcas (killer whales) swimming in a deep blue ocean. One orca is in the upper left, and two are in the lower right, with one of the two in the lower right creating a splash. The text "Thank You" is centered in white over the image.

# Thank You

