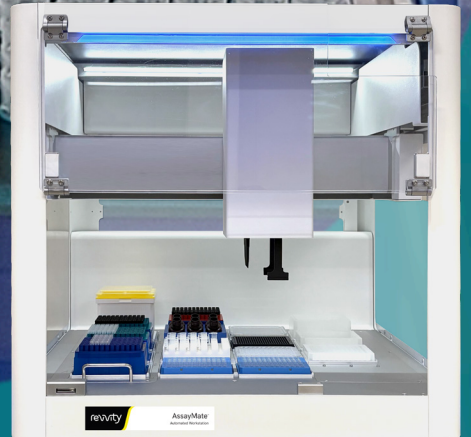


Automation
performance,
now for labs
of any size.



revvity

AssayMate™ workstation

Automation performance, now for labs of any size.

Compact. Fast-Moving. User-Friendly. Intelligent.

The AssayMate™ workstation is a benchtop-sized, automated liquid handler designed to optimize a wide range of laboratory applications. It integrates technologies such as collision detection, error handling, and real-time run visualization. The software, featuring an intuitive drag-and-drop interface, simplifies protocol building, making automation performance accessible to all.

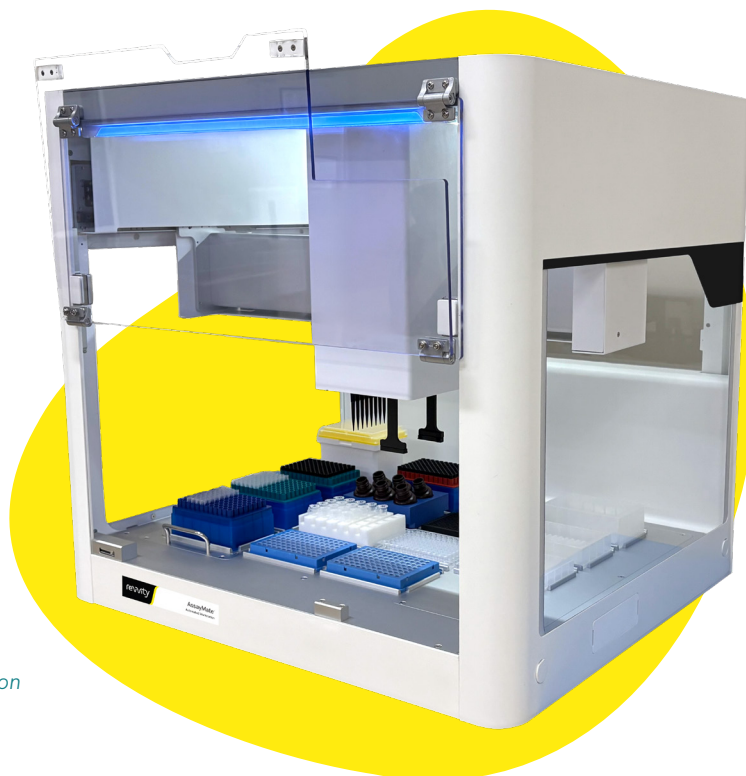
By streamlining high-volume, repetitive tasks, the AssayMate workstation significantly increases laboratory throughput and enables reproducibility and traceability. This operational efficiency frees up valuable time, allowing scientists to focus on data analysis and exploring new frontiers in scientific discovery.

Some key advantages:

- Partial tip loading capability allows to pipette from tube/vial/bottle
- Reconfigurable recessed deck easily accommodates optional modules
- Wide pipette volume range of 1-1000 µL without needing to switch head

Key features:

- Two configurations:
 - 8 channels + gripper
 - 1+8 pipetting channels
- Air displacement pipetting technology
- Pressure-based liquid level detection (pLLD)
- 12 + 4 (staging slots)
- Suitable for SBS labware
- Compact size
- Budget friendly
- Simple, intuitive software interface
- Optional modules enable many varied applications



| AssayMate™ workstation

Sample prep to accelerate your workflow

Hardware key features

Air displacement pipetting

Two pipetting heads are available: 1 or 8 fixed channels. The 8-channel pipetting head enables partial tip loading, automating medium throughput workflows.

Design efficiency

With 12+4 staging slots and an adaptive force control gripper, the AssayMate system can handle both hard and soft plates with ease.

Operational simplicity

A five-color indicator front light provides real-time system status updates, while its low noise level minimizes distractions in the lab. The deck includes a reconfigurable, recessed section to accommodate optional modules.

Many varied experimental processes can be performed when adding the optional Heater Shaker, Heater Cooler, and Magnetic Block modules.

Software key features

The AssayPREP™ software is built for efficiency and ease of use, with minimal training required.

Intuitive protocol building and editing

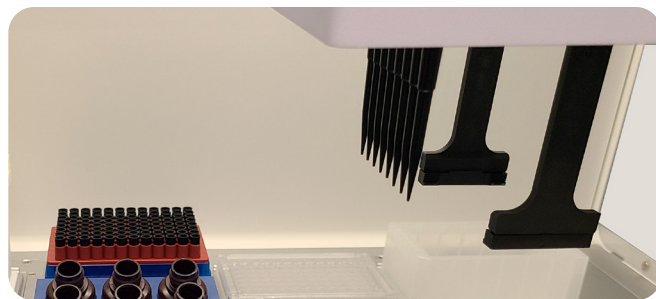
the drag-and-drop interface simplifies the creation of simple to more complex protocols.

Reliable operation

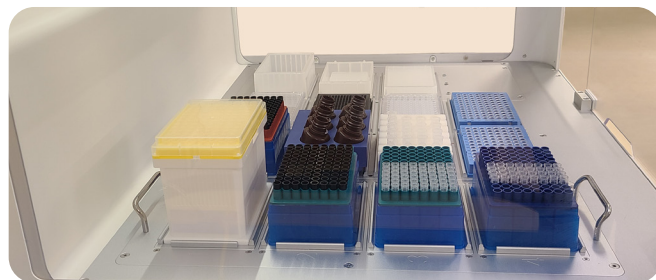
Features like plate drop detection and error handling increase the integrity of your runs while improving safety.

Full protocol visualization

Real-time run visualization provides valuable oversight of your experiment.



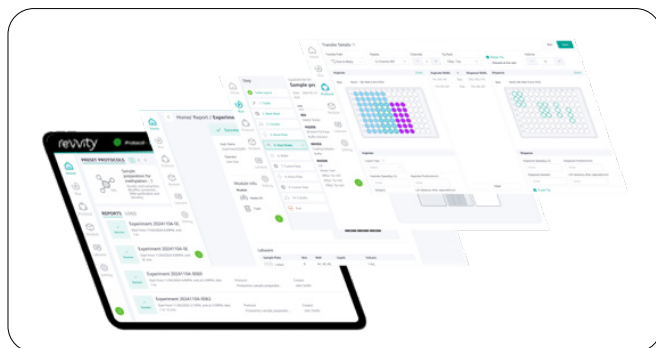
| 8-channel pipette and labware gripper



| Modular deck arrangement



| Heater Cooler, Heater Shaker, Magnetic Block, ODT



| AssayPREP software

Drag-and-drop editing: With drag-and-drop functionality and smart editing suggestions, with no code programming

Easy settings: Support default and custom labware and liquid classes

One-click start: Start experiments immediately and display the experiment process in real-time

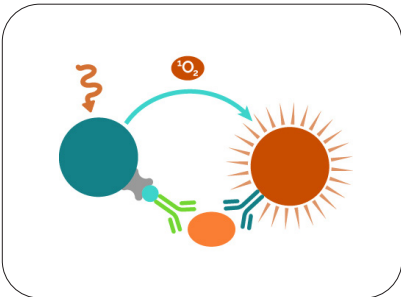
Quick recovery: Reliable error handling mechanism* allows experiment resumption

* For most error conditions

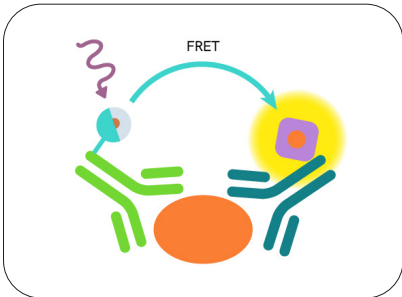
Powering your research

The AssayMate automates workflows at the scale you need to increase efficiency, reduce errors, and save hands-on time.
Common research fields: **Genomics, cell biology, drug discovery, proteomics**

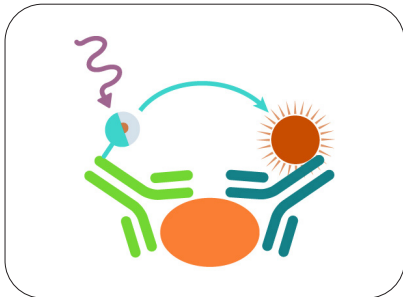
No-wash immunoassay technologies



Alpha - Versatile bead-based, no-wash, luminescent technology



HTRF™ - No-wash technology, gold reference for time-resolved FRET



LANCE™ - No-wash proximity assay technology that combines the benefits of TR with FRET

Most commonly used applications	Needed modules
Plate reformatting 96/384	
Serial dilutions	
Cell related applications (in clean room)	
PCR and qPCR setup	
HPLC setup	
Normalization	
Enzymatic assays	
ELISA (plate coating and washing)	
Colorimetric/photometric/fluorescence assay setup	
DNA & RNA extraction/purification (cell/tissue/virus/plant/soil/body fluids etc.)	Magnetic block
Cell-based assays and screening e.g. serological	
PCR-based plasmid cloning	
Mass spectrometry sample preparation	
Proximity Extension Assay (PEA) technology	
NGS library prep capability	Heater shaker, heater cooler, magnetic block, ODTC

This list is not exhaustive.

Lab essentials

Revvity offers a curated selection of essential lab supplies, from pipette tips and consumables to a wide variety of reagents and precision-engineered microplates, designed to support your research workflows.

Pipette tips, consumables



We offer a wide array of consumables, accessories, and starter kits to facilitate excellent performance of your Revvity automated workstation.



[Learn more](#)

Scan or click
for more information

Reagents



Our wide-ranging portfolio of reagents - including immunoassays, gene editing and modulation tools, primary and secondary antibodies, and molecular biology solutions - can transform your research and clinical outcomes.



[Learn more](#)

Scan or click
for more information

Microplates



Our microplates are engineered to provide high signal integrity and well- to-well consistency for your research applications, and are available in both standard and custom-configured formats.



[Learn more](#)

Scan or click
for more information

Frictionless support

We know your time is valuable. Choosing Revvity brings you a unified support system, so you don't have to troubleshoot between a liquid handler provider and a reagent vendor. This streamlined approach makes your life simpler and your projects more efficient. Having a single point of contact for your entire workflows is a massive time-saver and reduces stress when a project is on a deadline.

Automate. Integrate. Scale.

Connect the AssayMate workstation to our trusted plate::handler™ and explorer™ G3 workstation automation solutions to unlock:

- Comprehensive sample tracking
- Increased plate processing capacity with off-deck labware storage and random-access room temperature incubation capabilities
- End-to-end automation with plate handover to peripheral instruments like readers, washers, incubators, and more
- Support for advanced and/or multi-day protocols with scheduled processing enabled by our plate::works™ scheduling and job::manager process planning software optional modules



Integration with our robotic solutions transforms your AssayMate liquid handler from a standalone workstation into a modular and scalable laboratory ecosystem.

Specifications

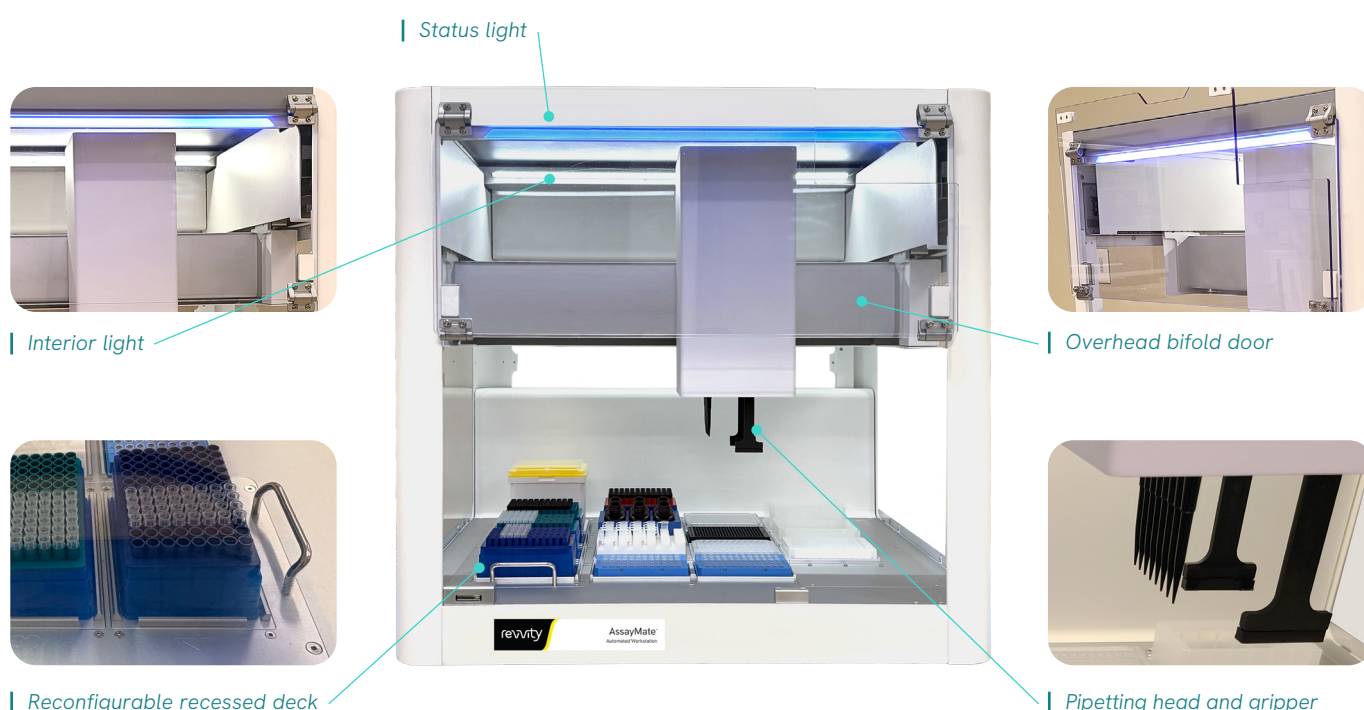
Dimensions	735mm × 650mm × 690mm / 290" × 26" × 27" (W, D, H)
Positioning accuracy	± 0.02 mm
Pipetting	Fixed 8-channel and/or 1-channel
Accuracy & precision	1-channel: accuracy $\leq \pm 10\%$, precision CV $\leq \pm 6\%$ @ 1 μL / 50 μL tip, single transfer 8-channel: accuracy $\leq \pm 7\%$, precision CV $\leq \pm 5\%$ @ 5 μL / 50 μL tip, single transfer
Pipette volume	1-1000 μL
Gripper	Hybrid force/position control gripper (with fixed 8-channel only)
Deck configuration	12+4 (staging) accommodating SBS/ANSI labware
Safety door	Overhead bifold door (protocol stops upon opening)
Advanced features	Error handling, protocol run visualization, collision detection
Optional modules	Heater-Shaker / Heater-Cooler / Magnetic Block / Thermocycler (ODTC)
Operating environment	Ambient Temp. : 10 °C - 40 °C
	Relative Humidity: 20%-80% (non-condensing)
Power supply	AC 100-240V, 50/60Hz

Starting small. Thinking big.

The AssayMate liquid handler is bridging the gap between manual pipetting and full-scale robotic workstations to bring automation performance to all labs thanks to its key advantages. Additionally, it is reagent agnostic and can accommodate a wide variety of labware, providing extended protocol capability.

By automating high-volume, repetitive tasks, labs can realize significant cost savings that can return the robot investment in a matter of months, not years. This makes advanced automation accessible to academic research labs, biotech startups, and smaller institutions.

The user-friendly software allows you to use your own Microsoft® Windows® OS-based device via Ethernet connection, thus reducing the total cost of ownership.



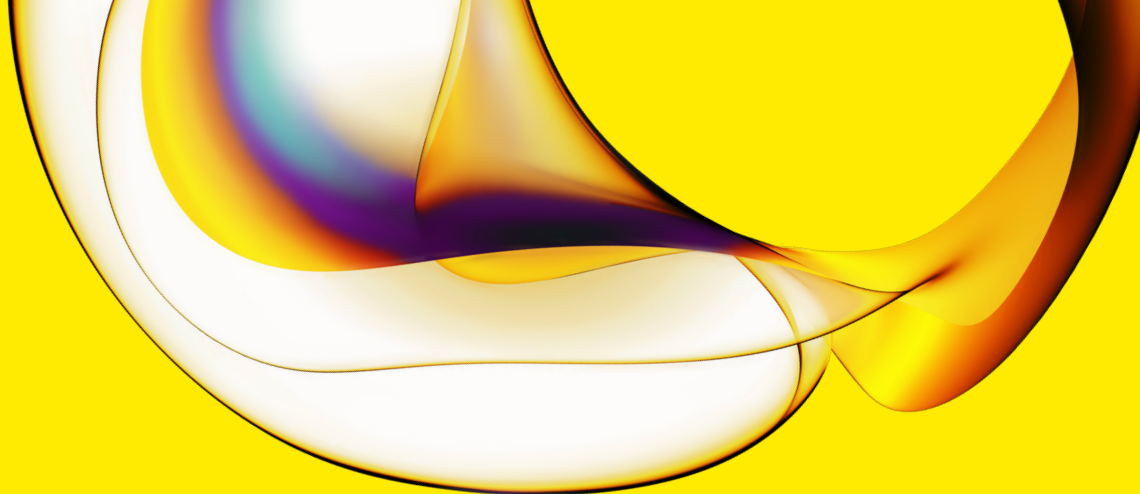
Lab benefits at a glance:

- Compact Design for benchtop use
- High speed and efficiency
- Quiet operation for a focused work environment
- No extensive training needed
- Accessible Automation at a budget-friendly cost



[Learn more](#)

Scan or click
for more information



www.revvity.com

revvity

Copyright ©2025, Revvity, Inc. All rights reserved.
Revvity is a trademark of Revvity, Inc. All other trademarks are the property of their respective owners.

2193004

For research use only.
Not for use in diagnostic procedures.