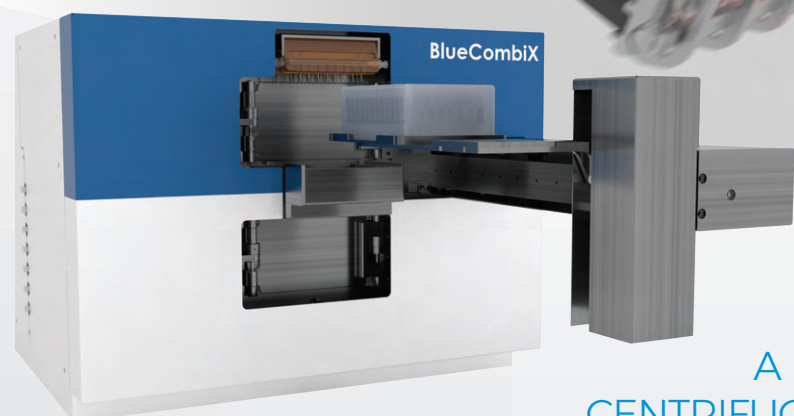
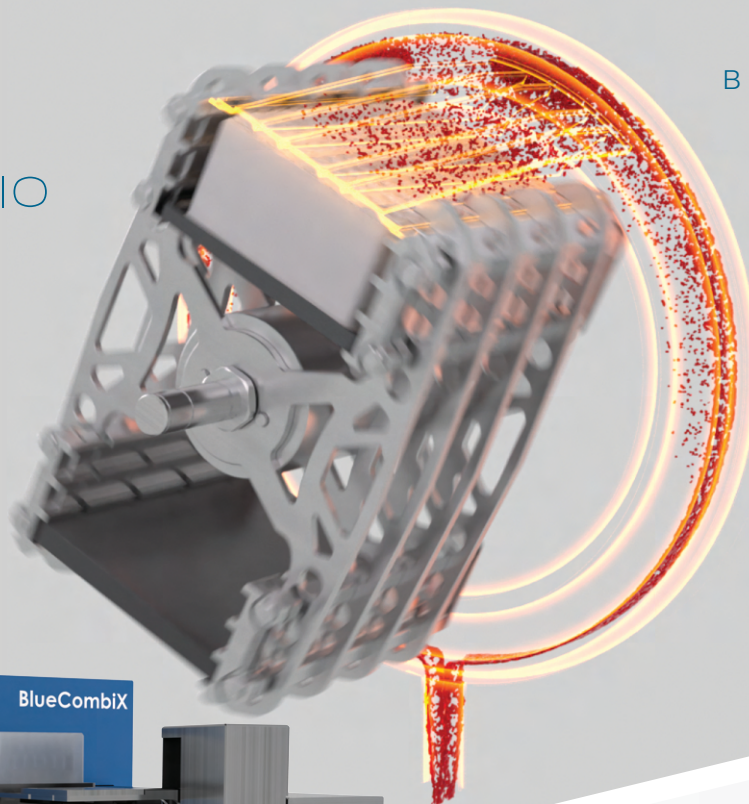




BLUE CAT BIO

BLUECATBIO.COM



BLUE®CATX

A MODULAR PLATFORM COMBINING
CENTRIFUGATION, EVACUATION, DISPENSING
AND PLATE STORAGE IN ONE SINGLE, COST-EFFECTIVE
PACKAGE. ENABLED BY THE BLUE®CAP LIQUID WASTE REMOVAL
SYSTEM THAT KEEPS THE ROTOR SPACE DRY AND CLEAN.

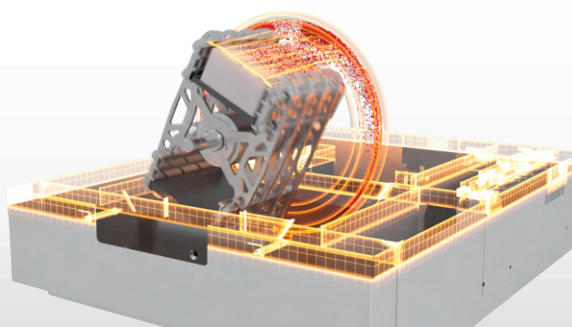
The modular **Blue®CatX** platform is available as **Blue®FugeX**, **Blue®WasherX** and **Blue®CombiX**; each variant is re-configurable into any other via upgrade kits making it highly economical to add functionality. Load plates by hand, external robot, or available autoloader that also serves an available

carousel plate store. Dispenses from 7 shared and 3 dedicated liquid inputs into any plate format (6w to 1536w, deep well). Fully configured, **Blue®CombiX** using our SLAS2024 New Product Award winning **Blue®Plate** automates flow cytometry sample prep with all spin-down, washing and reagent addition steps.

Blue®Cap System

Sharing a rotor space for centrifugation and evacuation is enabled by the patent-pending Blue®Cap waste removal system that keeps liquids and aerosols out of the rotor space, guaranteeing that plates being centrifuged cannot be contaminated from plates previously evacuated. The Blue®Cap consumable captures liquid waste directly above the plate during centrifugal evacuation and guides waste away from the precious

samples via the Blue®Ring, keeping the rotor space dry and clean. Easily maintain sterility by regularly replacing the Blue®Cap.





Blue®FugeX

Highest acceleration automated centrifuge, high tolerance for imbalance, tall door to load sandwich plates and precise settlement into well centers matching much larger centrifuges

Blue®CombiX

Enabled by the patent-pending **Blue®Cap** waste removal system that keeps the rotor space dry and clean, **Blue®CombiX** combines centrifugation and evacuation in a single, cost-effective package

Blue®WasherX

The evolution of our SLAS2015 NPA winning **Blue®Washer** features **Blue®Cap** and a larger, configurable rotor to evacuate any plate (6w to 1536w, deep well) with improved consistency

Options	<ul style="list-style-type: none"> Autoloader Carousel plate store Anytime upgrade to Blue®Combi 	<ul style="list-style-type: none"> Dispensing from 7 shared and 3 dedicated liquid inputs Carousel plate store 	<ul style="list-style-type: none"> Dispensing from 7 shared and 3 dedicated liquid inputs Carousel plate store Anytime upgrade to Blue®Combi
Applications	<ul style="list-style-type: none"> Cell spin-down into Blue®Plate with super fast ramp-up/ ramp-down speed Filtration/ sandwich assays Cell pelletization Condensate spin-down De-gassing 	<ul style="list-style-type: none"> Blue®Plate flow cytometry and 3D cellular assay sample prep with all spin-down, washing and reagent addition steps All Blue®FugeX and Blue®WasherX applications 	<ul style="list-style-type: none"> Blue®Plate evacuation and wash Low residual, consistent media change for highest quality cellular assays No tip magnetic bead assays Sterile applications Applications requiring waste-touching parts be replaceable Low adherent cellular and bead assays requiring more consistent g-force across rows than original Blue®Washer
Compatible plates	<ul style="list-style-type: none"> Any SBS format plate and plate sandwich up to 60mm tall 	<ul style="list-style-type: none"> Wash: any SBS format plate up to 44mm tall (6w – 1536w, deep well) Centrifuge: sandwich assays up to 60mm tall 	<ul style="list-style-type: none"> Any SBS format plate up to 44mm tall (6w – 1536w, deep well)
Key specs	<ul style="list-style-type: none"> Max 1000g at 3,000RPM Acceleration: 1,500 RPM/s Deceleration: 1,500 RPM/s Maximum weight difference between rotor sides: <ul style="list-style-type: none"> 70 g @ 1,000g/ 3,000 rpm 100 g @ 500g/ 2,115 rpm 225 g @ 100g/ 950 rpm 	<ul style="list-style-type: none"> See Blue®FugeX and Blue®WasherX key specs 	<ul style="list-style-type: none"> Residual volume after centrifugal evacuation: 0.01µl to 5µl per well, depending on application-specific evacuation method selected G-force delta between outside and center rows of 96w plate: 6% (vs. 43% original Blue®Washer) Dispenser: <ul style="list-style-type: none"> %CV: <+-3% Dead volume: 8ml
Weight	<ul style="list-style-type: none"> 35-55kg, depending on required tolerance for imbalance 	<ul style="list-style-type: none"> 35-60kg, depending on required tolerance for imbalance and dispenser options 	<ul style="list-style-type: none"> 30-35kg depending on dispenser options

Operation: Via PC-based graphical user interface or 3rd party controller via open AI

Dimensions (HxWxD): 41cm x 49cm x 60-80cm

Power requirements: 100 – 240 V, 50/60 Hz, 1000 W, auto sensing, I max = 10A

Ambient temperature: 15°C – 55°C | 60 F – 130F

BLUECATBIO EMEA / APAC

Hornungstreuth 22a
D-95512 Neudrossenfeld
info@bluecatbio.de

BLUECATBIO NORTH AMERICA

112 Etna Road
Lebanon, NH 03766
info@bluecatbio.com

Blue® is registered trademark
of BlueCatBio NH Inc
and BlueCatBio GmbH

