



EURO-NORM Plastic Pallets



Getting Things Moving with Attention Grabbing Reusable Solutions!



Back in 1985, the medium sized family company bekuplast began to successfully manufacture reusable transport packaging made of plastic. On an international scale, bekuplast develops, produces and markets containers, shelving units, trays and pallets.

In addition to a comprehensive range of standard products and a large number of industry specific solutions, the company has established itself as a provider of individual product solutions. Pushing logistics forward with sustainable solutions represents both the company's aim as well as its motivation.

bekuplast – Family business and Global Player

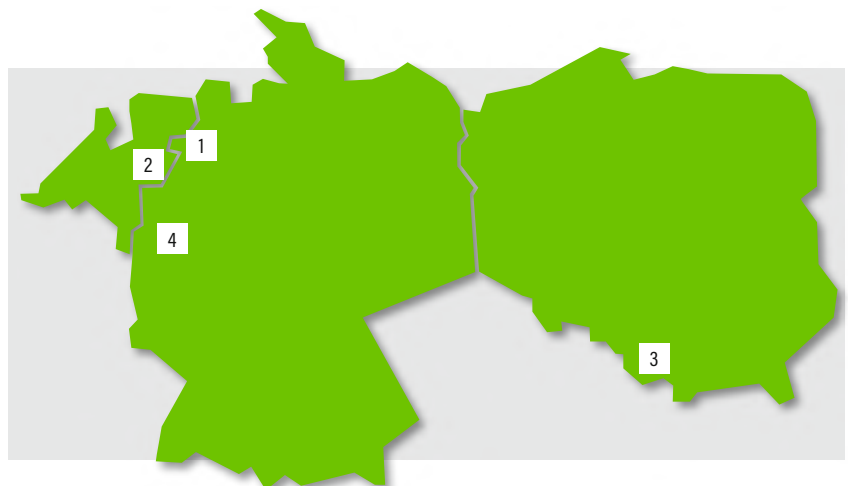
The bekuplast group of companies is one of Europe's leading manufacturers of reusable transport packaging made of plastic. The group is headquartered in Ringe, Germany, not far from the Dutch border. The bekuplast group of companies has two production facilities. The centrepiece is our state-of-the-art facility at our German headquarters. It covers approx. 120,000 m² with powerful injection moulding machines and state-of-the-art robot technology to produce around 20 million products annually.

Our international activities are supported by our subsidiaries in Germany, the Netherlands, and Poland. Each day, over 500 employees of the group work for bekuplast in the field of development, production and sales with enthusiasm and a passion for the quality of the products. Regular audits are carried out in order to guarantee and further improve the high quality standards. bekuplast is successfully certified in accordance with:

- + ISO 9001 (Quality management)
- + ISO 14001 (Environmental management)
- + ISO 50001 (Energy management)

Locations

- 1 bekuplast GmbH
Ringe, Deutschland
- 2 Schiphorst B. V.
Deventer, Niederlande
- 3 bekuplast S. A.
Łaziska Górne, Polen
- 4 Surplus Systems GmbH,
Bonn, Deutschland





Cleverly Designed, Efficiently Produced!

Years of experience, expertise and a precise knowledge of market requirements make us a competent partner. Qualified employees, market-oriented developments and modern technologies form the basis of our company's success.

Production Site, Ringe

- + injection moulding technology incl. water injection, in-mould labelling and 2K technology
- + 33 injection moulding machines with clamping force up to 1,500 tons
- + 3 large machines with clamping forces up to 3,000 tons
- + high degree of automation with 40 linear robots and 29 articulated robots
- + RFID realisation
- + finishing centre with printing machines, welding machines, milling machines, and automated labelling

Development

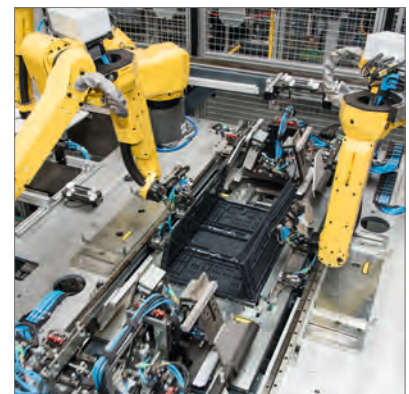
- + development of functional and individual reusable solutions
- + application of modern R&D tools
 - + e-drawings
 - + 3-D CAD
 - + rapid prototyping
 - + finite element method (FEM)
 - + fill simulation studies
- + in-house test lab



High Degree of Automation



Modern Production



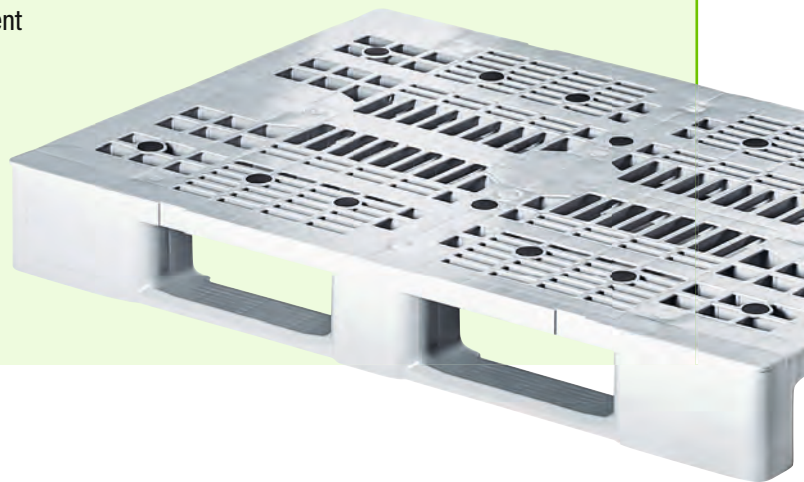
Application of Robot Technology



The Pallet with Many Talents!

The varioPallet is a true all-rounder. With an open deck or a closed deck, this plastic pallet is optimally suited for both the food and non-food sectors. With a number of additional features, the varioPallet can be adapted to special logistical requirements, e.g.: intralogistics, industry, food logistics or trade. The pallet is therefore optionally available with a safety edge in various designs, steel reinforcement for heavy loads or an anti-slip plug.

The varioPallet sets standards in terms of hygiene and stability. For maximum rigidity, it can be equipped with steel reinforcement and welded runners. The pallet does not have any created openings in the intended position, and as such, neither dirt nor water can collect. This makes the varioPallet particularly easy to clean and in addition, it meets the highest hygiene standards.



varioPallet - Plus Points at a Glance!

- + with an open deck or a closed deck
- + high stability with a low unladen weight (starting from approx. 11 kg)
- + runners with double-sided ramp slants for use by industrial trucks
- + easy to clean thanks to smooth surfaces and, as an option, completely closed runners
- + available in the following designs, either without an outer edge, or alternatively, with an outer edge:
 - + raised outer edge at a height of 7 mm and 22 mm
 - + outward edge at a height of 22 mm for using the entire surface (1,200 x 800 mm)
- + maximum rigidity as a result of steel reinforcement and welded runners on pallets with a closed and open deck
- + retainer openings for anti-slip rubber plugs on pallets with an open deck
- + optimum banding as a result of recessed pockets in the deck
- + with shrink corners for securely holding packaging films
- + RFID-ready
- + high quality, made from:
 - + reclaimed materials ('basic' and 'basic+' models)
 - + virgin PP and virgin HDPE ('advanced' models)



Without an anti-slip edge



With a rising anti-slip edge



With an outward anti-slip edge



Shrink corners



The right material for every application

Depending on the requirements, the bekuplast plastic pallets are available in different material qualities:

basic

Pallets in the 'basic' category are made from recycled material. They are less robust than pallets made of the 'basic +' material. This is why they are priced lower and therefore more suitable for use as an export pallet.

'basic' pallets are not just disposable pallets. Their quality also allows for more frequent use.

basic+

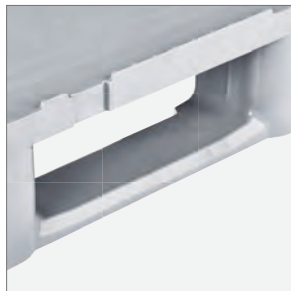
Pallets in the 'basic +' category are made from high quality recycled materials. They are stable and durable in terms of their ability to accommodate high loads and are preferably used as a reusable pallet in closed returnable systems and in open pooling.

advanced

Pallets in the 'advanced' category are made from HDPE and PP. Virgin material is exclusively used for these pallets. Pallets in the 'advanced' category meet the highest requirements in terms of stability and durability, and are guaranteed to be food safe.



Anti-slip plugs for pallets with an open deck



Ramp slants



Welded runners



Steel reinforcement



medium



1208 M basic 3ROR

Outer Dimensions (in mm)	Base Support	Anti-slip edge				Anti-slip rubber plugs	RFID	Load Capacity			Weight	Stock Item in Colour(s)	PU	Article No.
		without an anti-slip edge	raised outer edge at a height of 7 mm	raised outer edge at a height of 22 mm	outward edge at a height of 22 mm			dynamic	static	high rack				
	3 runners													

With open runners

1.200 x 800 x 148	✓		✓					750 kg	3,500 kg	450 kg	11 kg	■		PV1208.3K10-0930E
		■		■	■	■	■							

With welded runners

1.200 x 800 x 148	✓		✓					Expected to be available at the end of 2019						PV1208.3V10-0930E
		■		■	■	■	■							

With open runners and steel reinforcement

1.200 x 800 x 148	✓		✓					Expected to be available at the end of 2019						PV1208.3K12-0930E
		■		■	■	■	■							

With welded runners and steel reinforcement

1.200 x 800 x 148	✓		✓					Expected to be available at the end of 2019						PV1208.3V12-0930E
		■		■	■	■	■							

1208 M basic+ 3ROR

Outer Dimensions (in mm)	Base Support	Anti-slip edge				Anti-slip rubber plugs	RFID	Load Capacity			Weight	Stock Item in Colour(s)	PU	Article No.
		without an anti-slip edge	raised outer edge at a height of 7 mm	raised outer edge at a height of 22 mm	outward edge at a height of 22 mm			dynamic	static	high rack				
	3 runners													

With open runners

1.200 x 800 x 148	✓		✓					1,000 kg	4,000 kg	500 kg	11 kg	■	16	PV1208.3K10-00000
		■		■	■	■	■							

With welded runners

1.200 x 800 x 148	✓		✓					Expected to be available at the end of 2019						PV1208.3V10-00000
		■		■	■	■	■							

With open runners and steel reinforcement

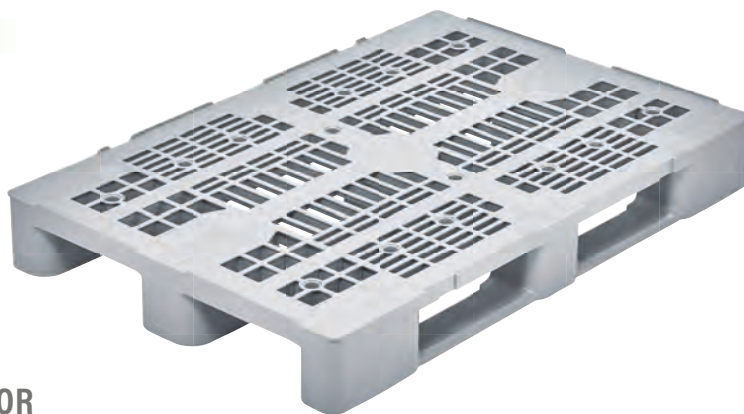
1.200 x 800 x 148	✓		✓					Expected to be available at the end of 2019						PV1208.3K12-00000
		■		■	■	■	■							

With welded runners and steel reinforcement

1.200 x 800 x 148	✓		✓					Expected to be available at the end of 2019						PV1208.3V12-00000
		■		■	■	■	■							



medium



1208 M advanced 3ROR

Outer Dimensions (in mm)	Base Support	Anti-slip edge				Anti-slip rubber plugs	RFID	Load Capacity			Weight	Stock Item in Colour(s)	PU	Article No.
		without an anti-slip edge	raised outer edge at a height of 7 mm	raised outer edge at a height of 22 mm	outward edge at a height of 22 mm			dynamic	static	high rack				
	3 runners													

With open runners

1.200 x 800 x 148	✓		✓					1,000 kg	4,000 kg	500 kg	11 kg	-	16	PV1208.3K10-40101
		▪		▪	▪	▪	▪							

With welded runners

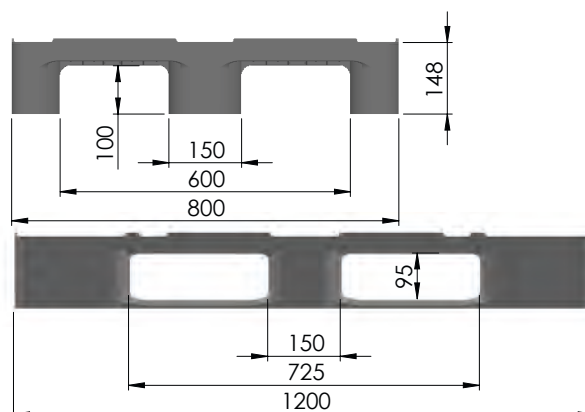
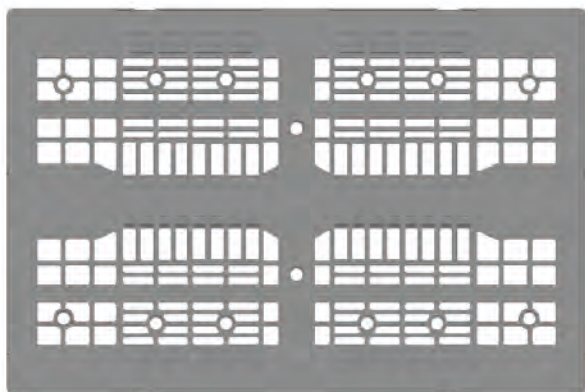
1.200 x 800 x 148	✓		✓					Expected to be available at the end of 2019						PV1208.3V10-40101
		▪		▪	▪	▪	▪							

With open runners and steel reinforcement

1.200 x 800 x 148	✓		✓					Expected to be available at the end of 2019						PV1208.3K12-40101
		▪		▪	▪	▪	▪							

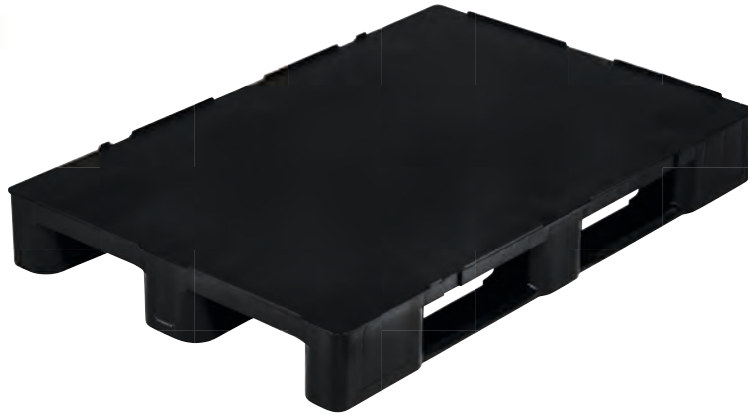
With welded runners and steel reinforcement

1.200 x 800 x 148	✓		✓					Expected to be available at the end of 2019						PV1208.3V12-40101
		▪		▪	▪	▪	▪							





medium



1208 M basic 3RCR

Outer Dimensions (in mm)	Base Support	Anti-slip edge				Anti-slip rubber plugs	RFID	Load Capacity			Weight	Stock Item in Colour(s)	PU	Article No.
		without an anti-slip edge	raised outer edge at a height of 7 mm	raised outer edge at a height of 22 mm	outward edge at a height of 22 mm			dynamic	static	high rack				
	3 runners													

With open runners

1.200 x 800 x 148	✓		✓					750 kg	3,500 kg	450 kg	12.2 kg	■		PV1208/3K10-0930E
		■		■	■		■							

With welded runners

1.200 x 800 x 148	✓		✓					Expected to be available at the end of 2019						PV1208/3V10-0930E
		■		■	■		■							

With open runners and steel reinforcement

1.200 x 800 x 148	✓		✓					Expected to be available at the end of 2019						PV1208/3K12-0930E
		■		■	■		■							

With welded runners and steel reinforcement

1.200 x 800 x 148	✓		✓					Expected to be available at the end of 2019						PV1208/3V12-0930E
		■		■	■		■							

1208 M basic+ 3RCR

Outer Dimensions (in mm)	Base Support	Anti-slip edge				Anti-slip rubber plugs	RFID	Load Capacity			Weight	Stock Item in Colour(s)	PU	Article No.
		without an anti-slip edge	raised outer edge at a height of 7 mm	raised outer edge at a height of 22 mm	outward edge at a height of 22 mm			dynamic	static	high rack				
	3 runners													

With open runners

1.200 x 800 x 148	✓		✓					1,000 kg	4,000 kg	500 kg	12.2 kg	■	16	PV1208/3K10-00000
		■		■	■		■							

With welded runners

1.200 x 800 x 148	✓		✓					Expected to be available at the end of 2019						PV1208/3V10-00000
		■		■	■		■							

With open runners and steel reinforcement

1.200 x 800 x 148	✓		✓					Expected to be available at the end of 2019						PV1208/3K12-00000
		■		■	■		■							

With welded runners and steel reinforcement

1.200 x 800 x 148	✓		✓					Expected to be available at the end of 2019						PV1208/3V12-00000
		■		■	■		■							



medium



1208 M advanced 3RCR

Outer Dimensions (in mm)	Base Support	Anti-slip edge				Anti-slip rubber plugs	RFID	Load Capacity			Weight	Stock Item in Colour(s)	PU	Article No.
		without an anti-slip edge	raised outer edge at a height of 7 mm	raised outer edge at a height of 22 mm	outward edge at a height of 22 mm			dynamic	static	high rack				

With open runners

1.200 x 800 x 148	✓	■	✓	■	■	■	■	1,000 kg	4,000 kg	500 kg	12.2 kg	■	16	PV1208/3K10-40101
-------------------	---	---	---	---	---	---	---	----------	----------	--------	---------	---	----	-------------------

With welded runners

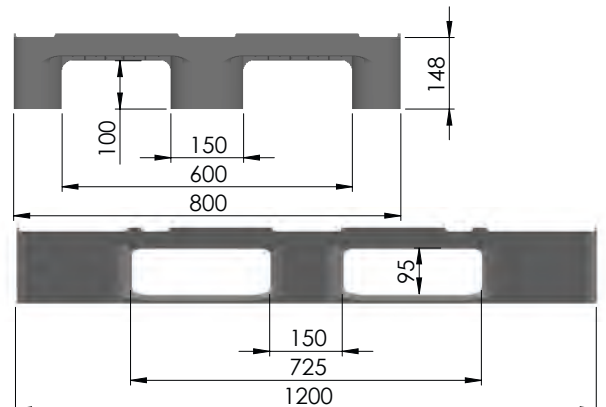
1.200 x 800 x 148	✓	■	✓	■	■	■	■	Expected to be available at the end of 2019						PV1208/3V10-40101
-------------------	---	---	---	---	---	---	---	---	--	--	--	--	--	-------------------

With open runners and steel reinforcement

1.200 x 800 x 148	✓	■	✓	■	■	■	■	Expected to be available at the end of 2019						PV1208/3K12-40101
-------------------	---	---	---	---	---	---	---	---	--	--	--	--	--	-------------------

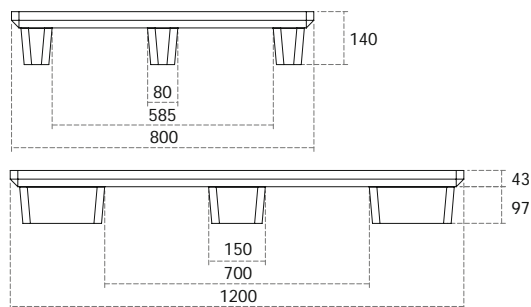
With welded runners and steel reinforcement

1.200 x 800 x 148	✓	■	✓	■	■	■	■	Expected to be available at the end of 2019						PV1208/3V12-40101
-------------------	---	---	---	---	---	---	---	---	--	--	--	--	--	-------------------





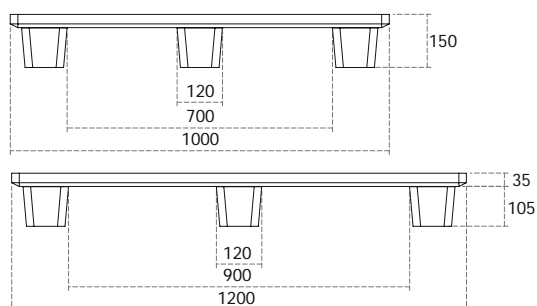
1208 L



light

Outer Dimensions (in mm)	Description	Version	Anti-slip edge			Load Capacity			Weight	Stock Item in Colour(s)	PU	Article No.
			without an anti-slip edge	with an anti-slip edge, 6 mm height	with an anti-slip edge, special height in mm	dynamic	static	high rack				
1,200 x 800 x 140	1208 L basic 9FOR	stackable 9 feet		✓		1,200 kg	2,500 kg	-	5,8 kg	■	48	H-P 0131/1

1210 L

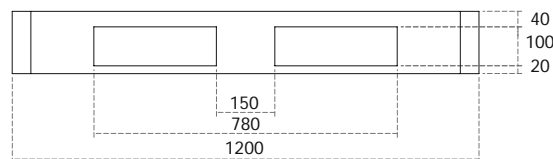
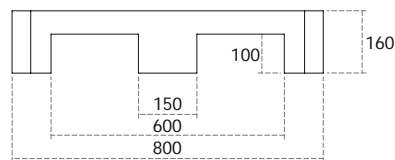


light

Outer Dimensions (in mm)	Description	Version	Anti-slip edge			Load Capacity			Weight	Stock Item in Colour(s)	PU	Article No.
			without an anti-slip edge	with an anti-slip edge, 6 mm height	with an anti-slip edge, special height in mm	dynamic	static	high rack				
1,200 x 1,000 x 150	1210 L basic 9FOR	stackable 9 feet		✓		800 kg	2,500 kg	-	6,5 kg	■	50	H-P 0020/1



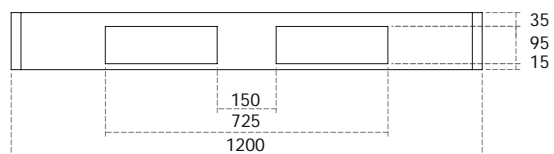
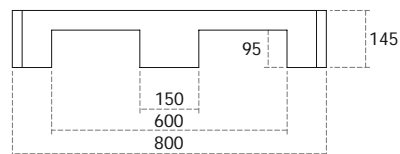
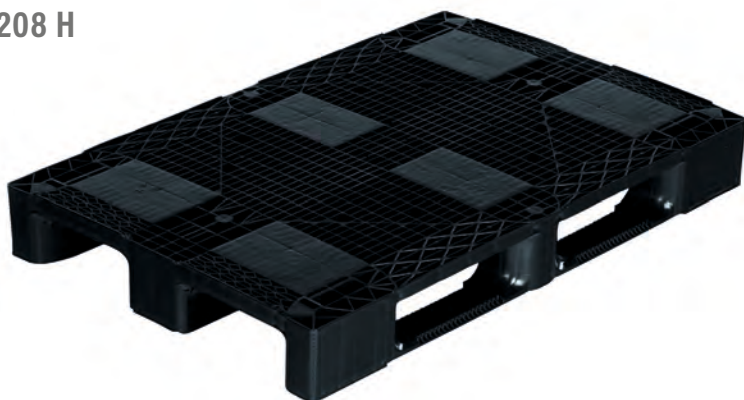
Euro H1



heavy

Outer Dimensions (in mm)	Description	Base Support			Anti-slip edge			Load Capacity			Weight	Stock Item in Colour(s)	PU	Article No.
		3 runners	5 runners	6 runners	without an anti-slip edge	with an anti-slip edge, 7 mm height	with an anti-slip edge, special height in mm	dynamic	static	high rack				
1,200 x 800 x 160	Euro H1	✓				✓		1,250 kg	5,000 kg	1,000 kg	18 kg	■	15	H-P 0116/1

1208 H

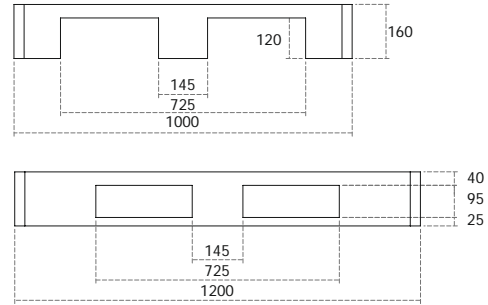


heavy

Outer Dimensions (in mm)	Description	Base Support			Anti-slip edge			Load Capacity			Weight	Stock Item in Colour(s)	PU	Article No.
		3 runners	5 runners	6 runners	without an anti-slip edge	with an anti-slip edge, 6 mm height	with an anti-slip edge, special height in mm	dynamic	static	high rack				
1,200 x 800 x 145	1208 H basic 3ROR	✓				✓		1,000 kg	4,000 kg	600 kg	17.5 kg	-	16	S 7341500093
1,200 x 800 x 145	1208 H basic+ 3ROR	✓				✓		1,250 kg	5,000 kg	800 kg	17.5 kg	■	16	S 7341000093



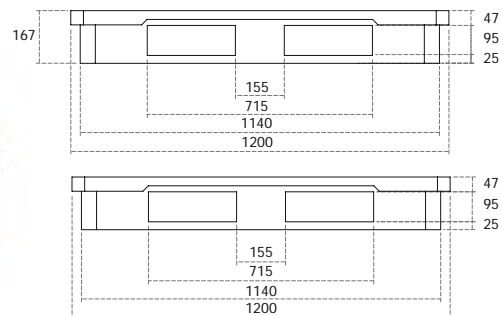
1210 H



heavy

Outer Dimensions (in mm)	Description	Base Support			Anti-slip edge			Load Capacity			Weight	Stock Item in Colour(s)	PU	Article No.
		3 runners	5 runners	6 runners	without an anti-slip edge	with an anti-slip edge, 6 mm height	with an anti-slip edge, special height in mm	dynamic	static	high rack				
1,200 x 1,000 x 160	1210 H basic 3ROR	✓	■	■	■	✓	22	1,000 kg	4,000 kg	800 kg	19 kg	■	15	S 7342502093
1,200 x 1,000 x 160	1210 H basic+ 3ROR	✓	■	■	■	✓	22	1,250 kg	4,500 kg	1,000 kg	19 kg	■	15	S 7342002093

1212 H

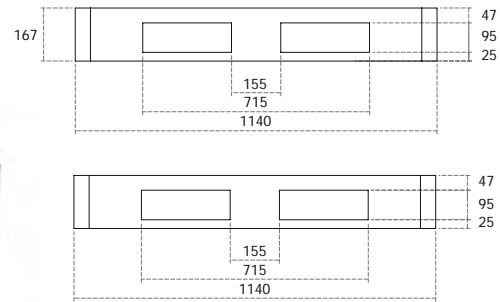
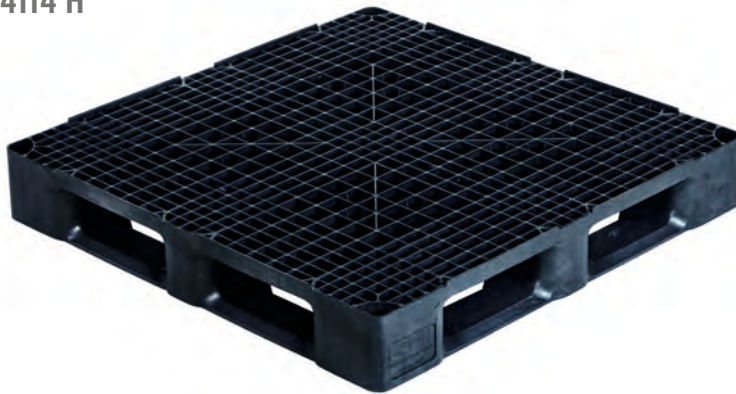


heavy

Outer Dimensions (in mm)	Description	Base Support			Anti-slip edge			Load Capacity			Weight	Stock Item in Colour(s)	PU	Article No.
		3 runners	5 runners	6 runners	without an anti-slip edge	with an anti-slip edge, 6 mm height	with an anti-slip edge, special height in mm	dynamic	static	high rack				
1,200 x 1,200 x 167	1212 H basic 6ROR	■	■	✓	■	✓		1,250 kg	4,000 kg	1,000 kg	27 kg	■	14	Q 1867005093
1,200 x 1,200 x 167	1212 H basic+ 6ROR	■	■	✓	■	✓		1,500 kg	5,000 kg	1,250 kg	26.5 kg	■	14	Q 1874005930



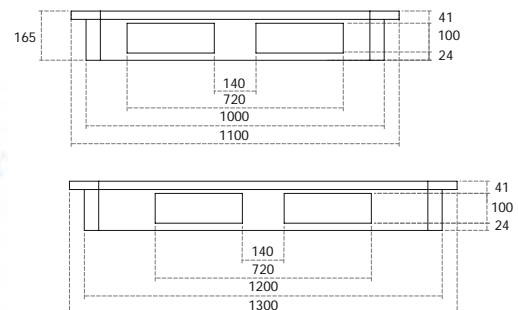
114114 H



heavy

Outer Dimensions (in mm)	Description	Base Support			Anti-slip edge			Load Capacity			Weight	Stock Item in Colour(s)	PU	Article No.
		3 runners	5 runners	6 runners	without an anti-slip edge	with an anti-slip edge, 6 mm height	with an anti-slip edge, special height in mm	dynamic	static	high rack				
1,140 x 1,140 x 167	114114 H basic 6ROR	▪	▪	✓	▪	✓		1,250 kg	4,000 kg	1,000 kg	26.5 kg	■	14	Q 1864005093
1,140 x 1,140 x 167	114114 H basic+ 6ROR	▪	▪	✓	▪	✓		1,500 kg	5,000 kg	1,250 kg	25.5 kg	■	14	Q 1871005930

1311 H

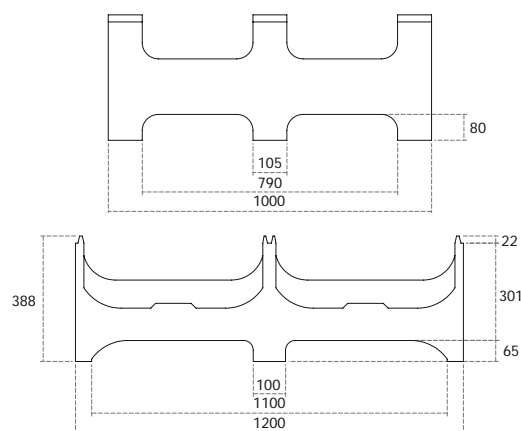
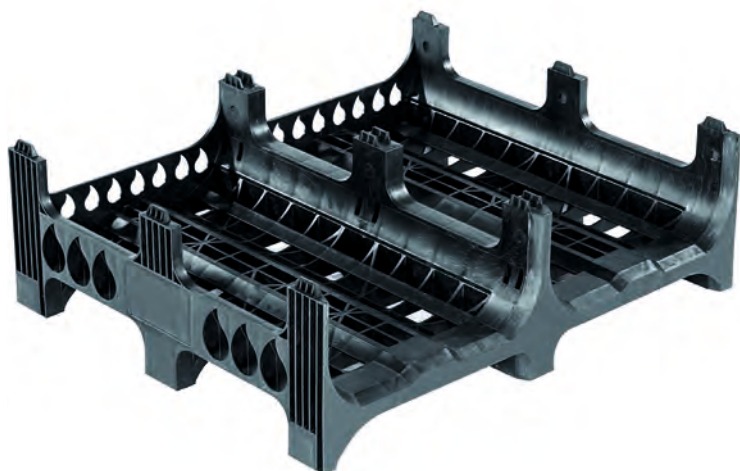


heavy

Outer Dimensions (in mm)	Description	Base Support			Anti-slip edge			Load Capacity			Weight	Stock Item in Colour(s)	PU	Article No.
		3 runners	5 runners	6 runners	without an anti-slip edge	with an anti-slip edge, 6 mm height	with an anti-slip edge, special height in mm	dynamic	static	high rack				
1,300 x 1,100 x 165	1311 H basic 6ROR	▪	▪		▪			1,250 kg	4,000 kg	1,000 kg	25.5 kg		15	S 1868005093
1,300 x 1,100 x 165	1311 H basic+ 6ROR	▪	▪		▪			1,500 kg	5,000 kg	1,250 kg	26 kg		15	S 1875005930

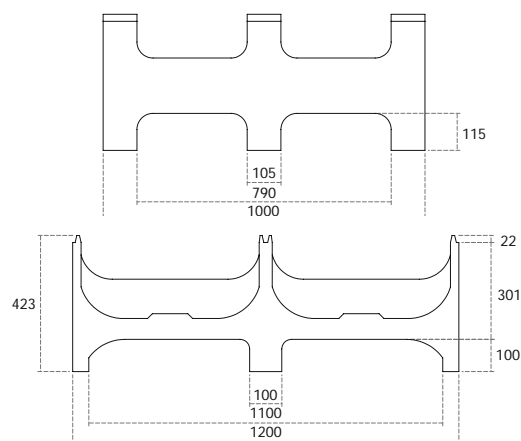
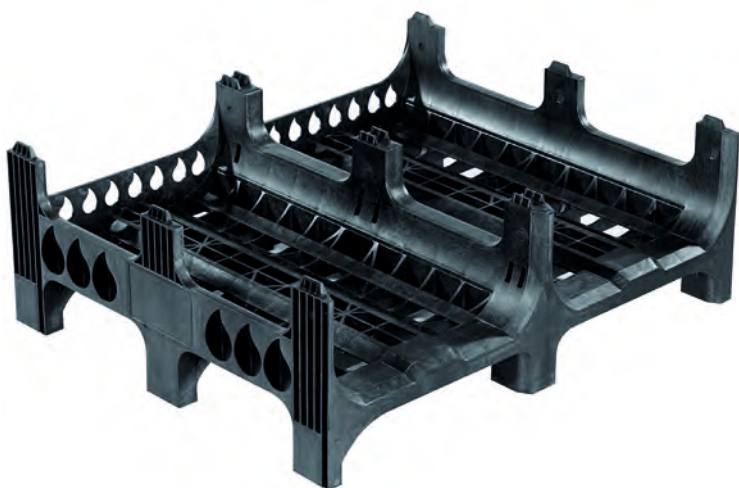


Bottleguard Low



Outer Dimensions (in mm)	Description	Version	Load Capacity Dynamic	Load Capacity Static	Load Capacity High Rack	Weight	Stock Item in Colour(s)	PU	Article No.
1,200 x 1,000 x 380	BG low virgin 9F	9 feet	1,750 kg	4,500 kg	–	17 kg	■	7	S 1917008930

Bottleguard High



Outer Dimensions (in mm)	Description	Version	Load Capacity Dynamic	Load Capacity Static	Load Capacity High Rack	Weight	Stock Item in Colour(s)	PU	Article No.
1,200 x 1,000 x 423	BG high virgin 9F	9 feet	1,750 kg	4,500 kg	–	18 kg	■	6	S 1916008930



Truck and Container Loading

Palett	Trailer		Jumbo		20H› container		40H› container		40› HC container		45› HC container	
	VE	Menge	VE	Menge	VE	Menge	VE	Menge	VE	Menge	VE	Menge
1208 L	50	1650	65	2470	50	550	50	1250	57	1425	57	1539
1210 L	50	1300	60	1800	48	432	48	1056	55	1210	55	1320
1208 M	16	528	19	722	16	176	16	400	17	425	17	459
1208 H	16	528	19	722	16	176	16	400	17	425	17	459
Euro H1	15	495	18	684	14	154	14	350	16	400	16	432
1208 H ESD	15	495	18	684	14	154	14	350	16	400	16	432
1210 H	15	390	18	540	14	126	14	308	16	352	16	384
1212 H	14	308	17	442	13	52	13	130	15	150	15	165
1311 H	15	330	17	442	14	112	14	252	15	270	15	300
114114 H	14	308	17	442	13	130	13	260	15	300	15	330
BG low	6	156	8	240	6	54	6	132	7	154	7	168
BG high	6	156	7	210	5	45	5	110	6	132	6	144





bekuplast GmbH · Industriestraße 1 · 49824 Ringe · Germany
+49 5944 9333-0 · info@bekuplast.com · www.bekuplast.com