



# EURO-NORM Collapsible Containers



## Getting Things Moving with Attention Grabbing Reusable Solutions!



Back in 1985, the medium sized family company bekuplast began to successfully manufacture reusable transport packaging made of plastic. On an international scale, bekuplast develops, produces and markets containers, shelving units, trays and pallets.

In addition to a comprehensive range of standard products and a large number of industry specific solutions, the company has established itself as a provider of individual product solutions. Pushing logistics forward with sustainable solutions represents both the company's aim as well as its motivation.

### bekuplast – Family business and Global Player

The bekuplast group of companies is one of Europe's leading manufacturers of reusable transport packaging made of plastic. The group is headquartered in Ringe, Germany, not far from the Dutch border. The bekuplast group of companies has two production facilities. The centrepiece is our state-of-the-art facility at our German headquarters. It covers approx. 120,000 m<sup>2</sup> with powerful injection moulding machines and state-of-the-art robot technology to produce around 20 million products annually.

Our international activities are supported by our subsidiaries in Germany, the Netherlands, and Poland. Each day, over 500 employees of the group work for bekuplast in the field of development, production and sales with enthusiasm and a passion for the quality of the products. Regular audits are carried out in order to guarantee and further improve the high quality standards. bekuplast is successfully certified in accordance with:

- + ISO 9001 (Quality management)
- + ISO 14001 (Environmental management)
- + ISO 50001 (Energy management)

#### Locations

- 1 bekuplast GmbH  
Ringe, Deutschland
- 2 Schiphorst B. V.  
Deventer, Niederlande
- 3 bekuplast S. A.  
Łaziska Górne, Polen
- 4 Surplus Systems GmbH,  
Bonn, Deutschland





## Cleverly Designed, Efficiently Produced!

Years of experience, expertise and a precise knowledge of market requirements make us a competent partner. Qualified employees, market-oriented developments and modern technologies form the basis of our company's success.

### Production Site, Ringe

- + injection moulding technology incl. water injection, in-mould labelling and 2K technology
- + 33 injection moulding machines with clamping force up to 1,500 tons
- + 3 large machines with clamping forces up to 3,000 tons
- + high degree of automation with 40 linear robots and 29 articulated robots
- + RFID realisation
- + finishing centre with printing machines, welding machines, milling machines, and automated labelling

### Development

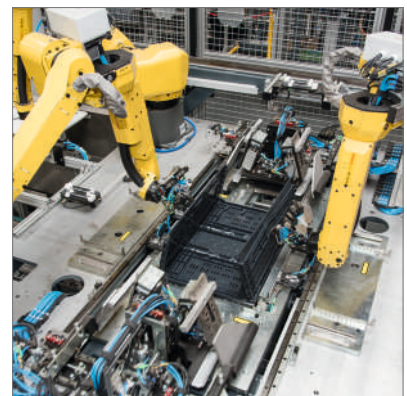
- + development of functional and individual reusable solutions
- + application of modern R&D tools
  - + e-drawings
  - + 3-D CAD
  - + rapid prototyping
  - + finite element method (FEM)
  - + fill simulation studies
- + in-house test lab



High Degree of Automation



Modern Production



Application of Robot Technology



## The Clever Way in which Logistics Can Work!

The Clever-Retail-Box shows just how efficient logistics can work. It offers volume reduction of around 80 % when empty. The tried and tested lift lock makes the box particularly user friendly and enables fully automatic handling. To suit individual requirements in the field of warehouse technology, the box is available with three different bases. As an additional bonus, the Clever-Retail-Box has an attachable RFID card system which has been patented by beku-plast and is used for identifying and tracing your containers.



### Clever-Retail-Box - Plus Points at a Glance!

- + simple handling as a result of the patented lift lock
- + with an attachable label holder
- + the goods are kept secure as a result of a mesh 'hand barrel' grip and an optional seal
- + secure fixing of plugged-in RFID cards using an integrated compartment
- + sidewall stability allows for a high stacking load
- + available with different bases
  - smooth base
  - miniload base
  - sandwich base



Lift Lock



Plugged-in RFID Cards



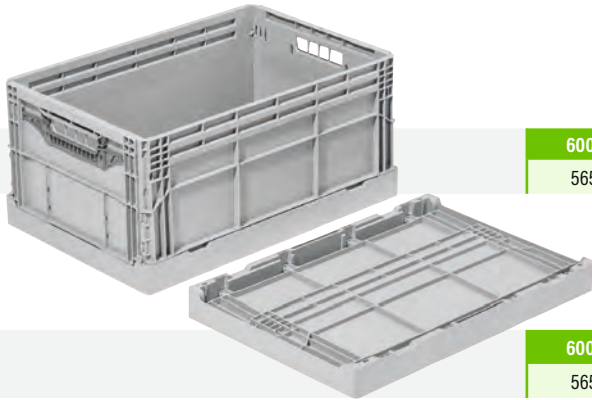
Studded Area



Sturdy Corner Design



Outer Dimensions (in mm)	Collapsed Height (in mm)	Volume	Weight	Stock Item in Colour(s)	PU	Article No.
Inner Dimensions (in mm)						



600 x 400 x 285	55	56 l	2,900 g	■	160	2700/002500
565 x 365 x 275						

With a miniload base

600 x 400 x 285	55	56 l	3,080 g	■	160	2700/003900
565 x 365 x 275						

With a sandwich base



600 x 400 x 400	85	80 l	3,310 g	-	-	4010/005500
568 x 365 x 387						

With a miniload base



Clever-Retail-Box - Available with Three Different Bases!

	Load Capacity up to	Article No.
smooth base	20 kg	xxxx/xx03xx
miniload base	35 kg	xxxx/xx25xx
sandwich base	50 kg	xxxx/xx39xx



## Cleverly Packed, Clever in Terms of Implementation!

The Clever-Move-Box is a universal box. It is best suited for transporting valuable goods and goods which require additional protection. The goods are optimally protected as a result of a sturdy box design and can be secured against theft with an additional seal.

With the patented Clever Box lock, the boxes can be simply folded up, either manually or fully automatically.



### Clever-Move-Box - Plus Points at a Glance!

- + fixed hinged lid connected with the box
- + available with ergonomic mesh 'hand barrel' grips or optionally with closed handles
- + suitable for mechanical handling and for use on roller conveyors
- + simple handling as a result of the patented Clever Box lock
- + very high stacking load (up to 400 kg)
- + long service life
- + volume reduction of around 80 %





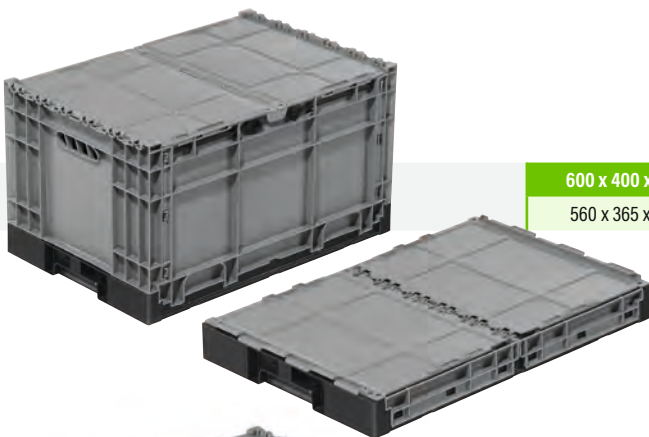
Outer Dimensions (in mm)	Collapsed Height (in mm)	Volume	Weight	Stock Item in Colour(s)	PU	Article No.
Inner Dimensions (in mm)						

400 x 300 mm



400 x 300 x 240	65	21 l	1,660 g	■	200	H-3424/000300
364 x 265 x 220						

600 x 400 mm



600 x 400 x 340	70	68.5 l	3,500 g	■	100	H-3301/000300
560 x 365 x 325						



600 x 400 x 393	121	87 l	4,250 g	-	72	H-3902/000300
558 x 366 x 380						



600 x 400 x 440	168	87 l	4,220 g	-	80	H-3905/000300
558 x 366 x 425						



		Seal		■	2,000	H-W 9PLOMBEN
--	--	------	--	---	-------	--------------



## The Series of Containers for Efficient Fresh Logistics!

The 'Clever-Fresh-Box advance' series of containers has been specially developed for reusable transport logistics related to fresh products. In a collapsed state, the new 'Clever-Fresh-Box advance' offers a volume reduction of around 84 % and as a result of this, is particularly space and cost efficient when it comes to return transport.

As a result of the indented corner and base design, the containers are extremely stable and very easy to stack. In order that fruit and vegetables are not damaged during transport, the perforated side walls are particularly smooth and they do not have sharp edges. Your fresh goods are perfectly protected and at the same time, they are transported in a way that is efficient and saves money.

### Clever-Fresh-Box advance - Plus Points at a Glance!

- + up to 84 % volume reduction
- + special base and corner design for accommodating high loads and improved stackability
- + fitted with an ergonomic lift lock
- + particularly smooth surfaces in order to protect the goods
- + easy to clean and very easy to dry
- + optimum perforation for ventilating fruit and vegetables
- + integrated hooks in order to fasten cling film
- + grooves for fixing banding
- + made from PP-C (polypropylene copolymer)



Stable Corner Design



Lift Lock



Optionally with In-mould Label



Smooth Surfaces



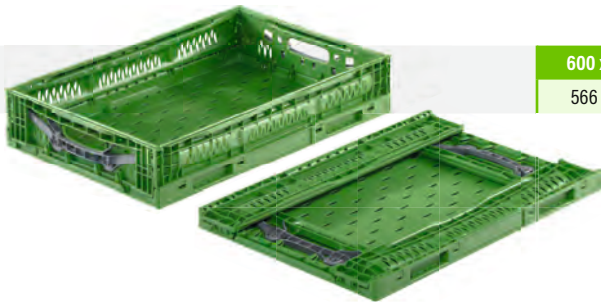


400 x 300 mm



Outer Dimensions (in mm)	Collapsed Height (in mm)	Volume	Weight	Stock Item in Colour(s)	PU	Article No.
Inner Dimensions (in mm)						
400 x 300 x 160	36	14 l	870 g	■	600	1559.201700
370 x 265 x 150						

600 x 400 mm



600 x 400 x 120	36	23 l	1,450 g	■	240	1256.384000
566 x 367 x 106						



600 x 400 x 180	36	35 l	1,780 g	■	240	1856.384000
566 x 367 x 165						



600 x 400 x 230	36	45 l	1,980 g	■	240	2356.384000
566 x 367 x 217						



Outer Dimensions (in mm)	Collapsed Height (in mm)	Volume	Weight	Stock Item in Colour(s)	PU	Article No.
Inner Dimensions (in mm)						

Utilysys®



600 x 400 x 232	44	44.3 l	2,030 g	-	250	2308.013300
567 x 367 x 222						



600 x 400 x 235	44	44 l	1,920 g	-	100	2309.013300
567 x 367 x 92/222						



Outer Dimensions (in mm)	Collapsed Height (in mm)	Volume	Weight	Stock Item in Colour(s)	PU	Article No.
Inner Dimensions (in mm)						



600 x 400 x 240	60	42 l	1,910 g		150	2305.010000
565 x 365 x 225						

### Clever-Fresh-Box extra high



600 x 400 x 410	83	79 l	3,050 g	-	104	4148.014300
566 x 367 x 396						



bekuplast GmbH · Industriestraße 1 · 49824 Ringe · Germany  
+49 5944 9333-0 · info@bekuplast.com · www.bekuplast.com