



EURO-NORM **silverline**



Getting Things Moving with Attention Grabbing Reusable Solutions!



Back in 1985, the medium sized family company bekuplast began to successfully manufacture reusable transport packaging made of plastic. On an international scale, bekuplast develops, produces and markets containers, shelving units, trays and pallets.

In addition to a comprehensive range of standard products and a large number of industry specific solutions, the company has established itself as a provider of individual product solutions. Pushing logistics forward with sustainable solutions represents both the company's aim as well as its motivation.

bekuplast - Family business and Global Player

The bekuplast group of companies is one of Europe's leading manufacturers of reusable transport packaging made of plastic. The group is headquartered in Ringe, Germany, not far from the Dutch border. The bekuplast group of companies has two production facilities. The centrepiece is our state-of-the-art facility at our German headquarters. It covers approx. 120,000 m² with powerful injection moulding machines and state-of-the-art robot technology to produce around 20 million products annually.

Our international activities are supported by our subsidiaries in Germany, the Netherlands, and Poland. Each day, over 500 employees of the group work for bekuplast in the field of development, production and sales with enthusiasm and a passion for the quality of the products. Regular audits are carried out in order to guarantee and further improve the high quality standards. bekuplast is successfully certified in accordance with:

- + ISO 9001 (Quality management)
- + ISO 14001 (Environmental management)
- + ISO 50001 (Energy management)

Locations

- 1 bekuplast GmbH
Ringe, Deutschland
- 2 Schiphorst B. V.
Deventer, Niederlande
- 3 bekuplast S. A.
Łaziska Górne, Polen
- 4 Surplus Systems GmbH,
Bonn, Deutschland





Cleverly Designed, Efficiently Produced!

Years of experience, expertise and a precise knowledge of market requirements make us a competent partner. Qualified employees, market-oriented developments and modern technologies form the basis of our company's success.

Production Site, Ringe

- + injection moulding technology incl. water injection, in-mould labelling and 2K technology
- + 33 injection moulding machines with clamping force up to 1,500 tons
- + 3 large machines with clamping forces up to 3,000 tons
- + high degree of automation with 40 linear robots and 29 articulated robots
- + RFID realisation
- + finishing centre with printing machines, welding machines, milling machines, and automated labelling

Development

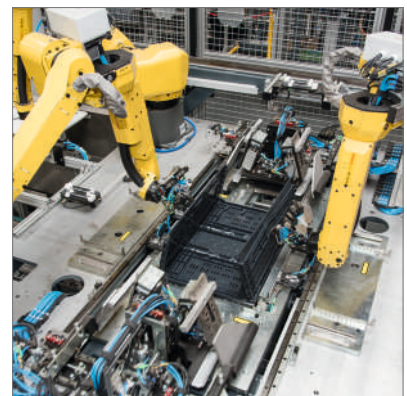
- + development of functional and individual reusable solutions
- + application of modern R&D tools
 - + e-drawings
 - + 3-D CAD
 - + rapid prototyping
 - + finite element method (FEM)
 - + fill simulation studies
- + in-house test lab



High Degree of Automation



Modern Production



Application of Robot Technology



silverline - Quality and Functionality!

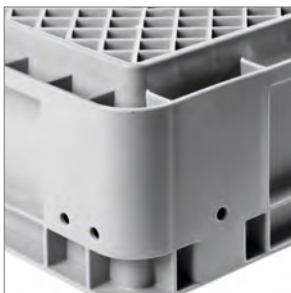


The stable silverline containers with reinforced, and as required, developed bases optimally fulfil the requirements of modern warehouse and transport logistics.

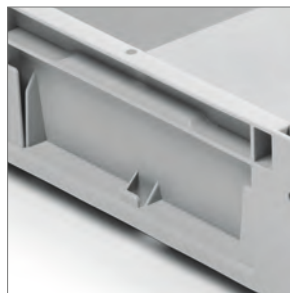
The containers, which are suitable for use in automatic small parts warehouses are also excellent for use on conveyors, on roller conveyors and in flow racks.

silverline - Plus Points at a Glance!

- + suitable for all requirements in automatic small parts warehouses as well as mechanical handling
- + extremely dimensionally stable and resilient
- + high crush resistance
- + impact resistant and shatterproof
- + As a result of the optimised chamfers, the special honeycomb structure and the rounded corners, silverline containers run with a particularly low level of noise on conveyor lines.
- + specially designed for rack feeders – e.g. for clamping belt conveyors, technical telescopic systems and freezer technology
- + temperature resistant in the range - 20 °C to + 60 °C
- + optional available with ESD conductivity
- + made of PP (polypropylene)
- + 100 % recyclable



Sturdy Corner Construction



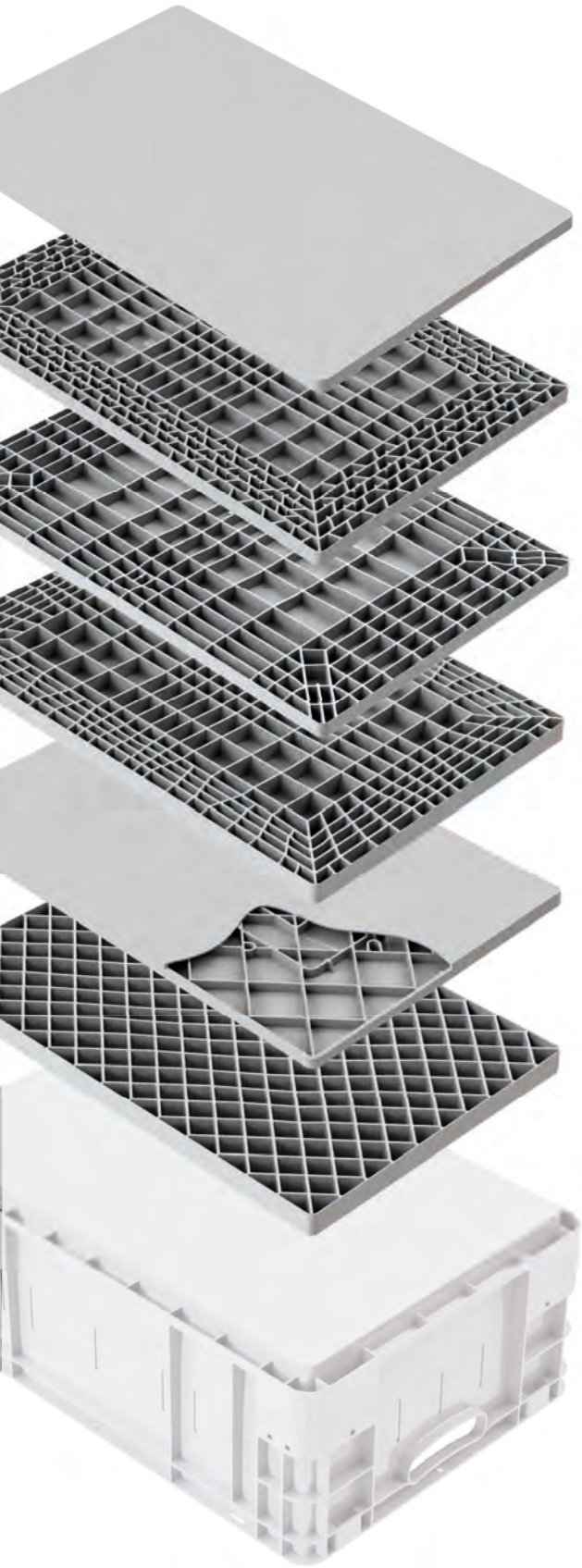
Integrated Label Holder



Open Handle



Closed Handle



smooth base

miniload base light

miniload base medium





miniload base heavy

sandwich base



diagonal base

Load Capacity up to	Article No.
20 kg	xxxx/xx03xx
30 kg	xxxx/xx35xx
35 kg	xxxx/xx32xx
50 kg	xxxx/xx25xx
50 kg	xxxx/xx39xx
50 kg	xxxx/xx15xx



Outer Dimensions (in mm)	Sides	Bottom						Handgrips		Volume	Weight	Stock Item in Colour(s)	PU	Article No.
		smooth base	sandwich base	miniload base light	miniload base medium	miniload base heavy	diagonal base	closed handgrips	open handgrips					
 300 x 200 x 120 269 x 169 x 117	✓	✓						✓		4.6 l	420 g	■ ■ ■	144	1230/002800
 400 x 300 x 120 367 x 267 x 116	✓ ✓	✓ ✓						✓ ✓	✓	10 l 10 l	900 g 900 g	- ■ ■ ■	160 160	1252/000300 1251/000300
 400 x 300 x 180 367 x 267 x 176	✓ ✓	✓ ✓						✓ ✓	✓	15 l 15 l	1,150 g 1,150 g	■ ■ ■ ■	104 104	1852/000300 1851/000300
 400 x 300 x 220 367 x 267 x 216	✓ ✓	✓ ✓						✓ ✓	✓	20 l 20 l	1,300 g 1,300 g	■ ■ ■ ■	80 80	2252/000300 2251/000300



	Outer Dimensions (in mm)	Sides	Bottom					Handgrips		Volume	Weight	Stock Item in Colour(s)	PU	Article No.
	Inner Dimensions (in mm)		closed	smooth base	sandwich base	miniload base light	miniload base medium	miniload base heavy	diagonal base					
	600 x 400 x 120 567 x 367 x 116	✓ ✓	✓ ✓						✓ ✓	20 l 20 l	1,500 g 1,500 g	■ ■ ■ ■ ■	80 80	1272/000300 1271/000300
	600 x 400 x 180 567 x 367 x 176	✓ ✓	✓ ✓						✓ ✓	30 l 30 l	1,850 g 1,850 g	■ ■ ■ ■ ■	52 52	1872/000300 1871/000300
	600 x 400 x 220 567 x 367 x 216	✓ ✓	✓ ✓						✓ ✓	40 l 40 l	2,030 g 2,030 g	■ ■ ■ ■ ■	40 40	2272/000300 2271/000300
	600 x 400 x 270 567 x 367 x 266	✓ ✓	✓ ✓						✓ ✓	50 l 50 l	2,400 g 2,400 g	■ ■ ■ ■ ■	32 32	2772/000300 2771/000300
	600 x 400 x 320 567 x 367 x 316	✓ ✓	✓ ✓						✓ ✓	60 l 60 l	2,610 g 2,610 g	■ ■ ■ ■ ■	40 40	3276/000300 3275/000300
	600 x 400 x 420 567 x 367 x 416	✓ ✓	✓ ✓						✓ ✓	80 l 80 l	3,200 g 3,200 g	■ ■ ■ ■ ■	20 20	4272/000300 4271/000300

■ = Variants are available, but are not continuously in stock



Outer Dimensions (in mm)	Sides	Bottom						Handgrips		Volume	Weight	Stock Item in Colour(s)	PU	Article No.
		closed	smooth base	sandwich base	miniload base light	miniload base medium	miniload base heavy	diagonal base	closed handgrips					
800 x 600 x 220	✓	✓						✓	✓	90 l	4,350 g	■ ■	20	2292/000300
752 x 552 x 216	✓	✓	■					✓		90 l	4,350 g	■	20	2291/000300
800 x 600 x 320	✓	✓						✓	✓	132 l	5,400 g	■ ■	14	3292/000300
752 x 552 x 316	✓	✓	■					✓		132 l	5,400 g	■	14	3291/000300



Always the Right Solution!

silverline containers are ideal for use in automatic small parts warehouses. The storage of many different products requires flexibility. The solution is divided compartments with partition plates made of polystyrene. The container walls have slots into which the partition plates are inserted. This way, the containers can be divided up as needed.





300 x 200 mm

Outer Dimensions
(in mm)

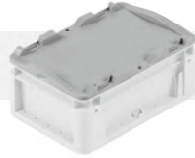
Description

Weight

Stock Item
in Colour(s)

PU

Article No.



300 x 200

Loose lid,
without container

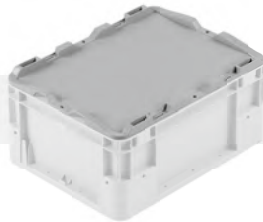
170 g



112

0070

400 x 300 mm



400 x 300

Loose lid,
without container

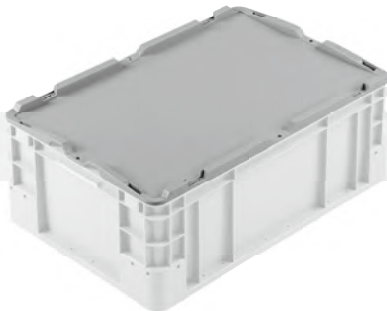
340 g



200

0075

600 x 400 mm



600 x 400

Loose lid,
without container

680 g



200

0085

800 x 600 mm



800 x 600

Loose lid,
without container

1,300 g





126

0088




	Outer Dimensions (in mm)	Description	Weight	Stock Item in Colour(s)	PU	Article No.
300 x 200 mm						
	300 x 200	Hinged lid, supplied unmounted, without a container and assembly accessories	170 g	■	112	0071
400 x 300 mm						
	400 x 300	Hinged lid, supplied unmounted, without a container and assembly accessories	340 g	■	200	0076
600 x 400 mm						
	600 x 400	Hinged lid, supplied unmounted, without a container and assembly accessories	680 g	■	200	0086
800 x 600 mm						
	800 x 600	Hinged lid, supplied unmounted, without a container and assembly accessories	1.280 g	■	120	0089

Assembly Accessories for Hinged Lids


		Stock Item in Colour(s)	PU	Article No.
	Six-part assembly accessories, consisting of : Spring lock Hinged fork Push-in element 2pcs of each are necessary per container	■ ■ ■	1 1 1	7243 7231 7232
	Seal	■	1.000	6137



	Outer Dimensions (in mm)	Description	Weight	Stock Item in Colour(s)	PU	Article No.
400 x 300 mm						
	400 x 300	Crocodile lids, supplied unmounted, without a container and assembly accessories	360 g	■	400	0080

600 x 400 mm						
	600 x 400	Crocodile lids, supplied unmounted, without a container and assembly accessories	710 g	■	400	0090

Assembly Accessories for Hinged Lids

		Stock Item in Colour(s)	PU	Article No.
	Four-part assembly accessories, consisting of: Hinged fork Push-in element 2pcs of each are necessary per container	■ ■	1 1 1	7231 7232

Always in Use!

Matching insert boxes are available for the silverline euro-norm series. These can be found in the chapter «Accessories».





bekuplast GmbH · Industriestraße 1 · 49824 Ringe · Germany
+49 5944 9333-0 · info@bekuplast.com · www.bekuplast.com