



Meat Technologies

Mobile Solutions

Trailer | Modular | Containerized



'animal welfare-friendly on-farm slaughter'



CANTEK

MOBILE SLAUGHTER AND COOLING UNITS

Mobile slaughter units are great solutions for people having difficulties in finding modern and appropriate slaughter facilities for slaughter services close by. Our solution approach supports the local farmers to handle their livestock without additional transfer and slaughter costs. The mobile units are configured to satisfy cattle, sheep, goat, poultry and pig processing - from start to finish and store the final products in mobile chilling rooms to keep the meat fresh in an uninterrupted cold chain.

The trailer model is for the target group that wants to use the unit at different locations frequently and intends to generate income from the offered slaughter service.

The modular and containerized model is for the target group that can either use the mobile unit with frequent change of location or wants to have it installed for permanent use at one location with the focus of generating income by the meat and by-products deriving from the slaughter process

Regular shipping containers are used for shipment. These units are designed to be quickly installed and connected to on-site water and power supply. The units are made from PU sandwich panels with steel supporting structure, CTP or of a regular container material; therefore either shipment is possible: dismantled or assembled. While dismantled systems are advantageous at overseas transportation, the assembled system is more advantageous during highway transportation. Dismantled systems can be easily installed with detailed assembly manual guides.

Mobile unit solutions are cost-effective for the user and the animal is treated in a humanely manner. The animal remains in its familiar environment, it is neither injured nor stressed before the slaughter act happens. The versatile unit is operated at maximum flexibility as the unit can be operated upon own preference – no matter at what time or location.

Cantek provides mobile unit solutions for several purposes: the slaughter process, the meat deboning and packaging, the offal cleaning, the chilling, cooling or blast freezing of final products of any shape.

The units are designed to work as self-contained and self-sufficient systems, but can be combined to complete plant combinations to meet requirements upon custom demand.

MOBILE CATTLE SLAUGHTER UNIT-ON WHEELS

M-SH-CATTLE-OW40

TYPE: TRAILER



- ❖ 'Plug-n-play'
- ❖ The unit is combined with a trailer chassis that just needs to be connected to a truck/carrier for transportation.
- ❖ A self-contained slaughter unit for cattle with a slaughter capacity up to 5 per hour.
- ❖ No construction from ground – self-sufficiency by an integrated technical equipment room.
- ❖ Suitable for daily use at any location, i.e. the backyard of a farm.
- ❖ Cattle with max. 700 kgs of live weight can be slaughtered properly.
- ❖ Prevention of contamination and food safety risks in a safe environment by complying to explicit sanitary standards.

MOBILE CATTLE SLAUGHTER UNIT-ON WHEELS

M-SH-CATTLE-OW40

TYPE:TRAILER

Technical Data

- ❖ Dimensions: W:2550, L:13600, H:5300 mm (H:3800 mm when closed)
- ❖ Installed Power: 36 Kw
- ❖ Electricity: 380/400 V, 50 Hz
- ❖ Clean Water Inlet: DN 20
- ❖ Waste Water outlet: DN 50
- ❖ Blood Outlet: DN 20

Unit Equipment

- ❖ Trailer Chassis
- ❖ Double Deck slaughter Construction
- ❖ CTP Panel Covering
- ❖ Floor Covering and Drainage (SS)
- ❖ Stunning Box (SS)
- ❖ Bleeding Area & Processing Area Tube rail systems (SS)
- ❖ Bleeding, Head taking, Transferring, Carcass Lowering Cranes
- ❖ Tube Rail Bleeding Hooks (SS)
- ❖ Tube Rail Processing Hooks (SS)
- ❖ Hydraulic Leg opening and Transferring Platform (SS)
- ❖ Hydraulic De-Hiding Machine (SS)
- ❖ Hydraulic Tripe and Carcass Splitting Platform (SS)
- ❖ Overhead Carcass Weighting (SS)
- ❖ Head Chute & Tripe Chute (SS)
- ❖ Washbasin & Knife Sterilizers (SS)
- ❖ LED Lighting
- ❖ Generator
- ❖ Blood Collection Tank (SS)
- ❖ Waste Water Collection Tank (SS)
- ❖ Clean Water Storage Tank (SS)
- ❖ Water Heater
- ❖ Fully installed piping (SS)
- ❖ Fully installed electrical cabling
- ❖ Cleaning System (Combination Unit – Water, Chemicals, Disinfectant)
- ❖ Hydraulic Control System for Constructions and equipment
- ❖ Electrical Control Panel with PLC control

Optional:

- ❖ *EFA Leg Cutting Share*
- ❖ *EFA Carcass Splitting Saw*
- ❖ *EFA Breastbone Saw*
- ❖ *EFA Quartering Saw*
- ❖ *EFA Stunner*

(SS:AISI 304 Stainless Steel)



MOBILE CATTLE SLAUGHTER UNIT-ON WHEELS

M-SH-CATTLE-OW40

TYPE: TRAILER

Technical Room

Weighting

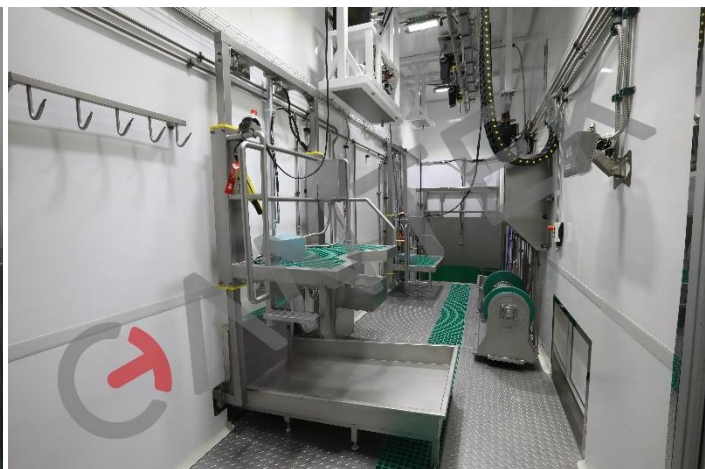
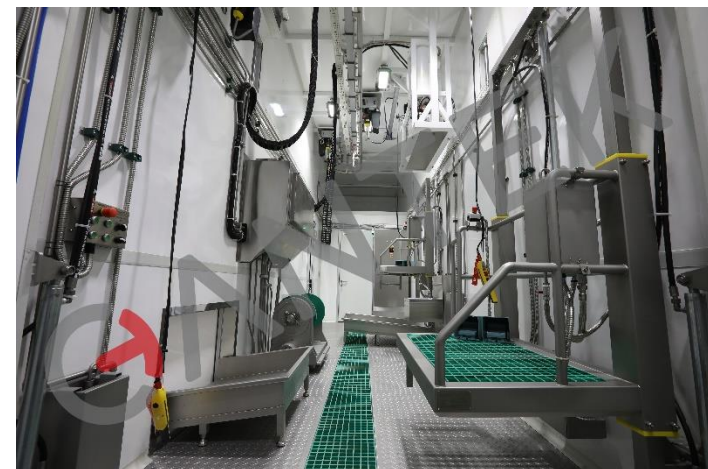
Transferring & De-hiding



Carcass
Quartering

White & red offal
removal and
Carcass Splitting

Stunning & Bleeding



MOBILE SHEEP&GOAT SLAUGHTER UNIT-ON WHEELS

M-SH-SHEEP-OW100

TYPE: TRAILER



- ❖ 'Plug-n-play'
- ❖ The unit is combined with a trailer chassis that just needs to be connected to a truck for transportation.
- ❖ A self-contained slaughter unit for sheep with a slaughter capacity up to 10-15 per hour.
- ❖ No construction from ground – self-sufficiency by an integrated technical equipment room.
- ❖ Suitable for daily use at any location, i.e. the backyard of a farm.
- ❖ Prevention of contamination and food safety risks in a safe environment by complying to explicit sanitary standards.

MOBILE SHEEP&GOAT SLAUGHTER UNIT-ON WHEELS

M-SH-SHEEP-OW100

TYPE: TRAILER

Technical Data

- ❖ Dimensions: W:2550, L:13600, H:3800 mm
- ❖ Installed Power: 30 Kw
- ❖ Electricity: 380/400 V, 50 Hz
- ❖ Clean Water Inlet: DN 20
- ❖ Waste Water outlet: DN 50
- ❖ Blood Outlet: DN 20

Unit Equipment

- ❖ Trailer Chassis
- ❖ Steel Frame Construction
- ❖ Insulated Panel Covering
- ❖ Floor Covering and Drainage (SS)
- ❖ Stunning/Halal slaughter Box (SS)
- ❖ Bleeding Area & Processing Area rail systems (SS)
- ❖ Bleeding Hooks (SS)
- ❖ Processing Hooks (SS)
- ❖ De-Hiding Machine (SS)
- ❖ Overhead Carcass Weighting (SS)
- ❖ Waste Chute (SS)
- ❖ Washbasin & Knife Sterilizers (SS)
- ❖ LED Lighting
- ❖ Generator
- ❖ Blood Collection Tank (SS)
- ❖ Waste Water Collection Tank (SS)
- ❖ Clean Water Storage Tank (SS)
- ❖ Water Heater
- ❖ Fully installed piping (SS)
- ❖ Fully installed electrical cabling
- ❖ Cleaning System (Combination Unit – Water, Chemicals, Disinfectant)
- ❖ Hydraulic Control System for Constructions and equipment
- ❖ Electrical Control Panel with PLC control

Optional:

- ❖ *EFA Cutting Tools*

(SS:AISI 304 Stainless Steel)

MOBILE SHEEP&GOAT SLAUGHTER UNIT-ON WHEELS

M-SH-SHEEP-OW100

TYPE: TRAILER



MOBILE PIG SLAUGHTER UNIT-ON WHEELS

M-SH-PIG-OW80

TYPE: TRAILER



- ❖ 'Plug-n-play'
- ❖ The unit is combined with a trailer chassis that just needs to be connected to a truck for transportation.
- ❖ A self-contained slaughter unit for pigs with a slaughter capacity up to 10-12 per hour.
- ❖ No construction from ground – self-sufficiency by an integrated technical equipment room.
- ❖ Suitable for daily use at any location, i.e. the backyard of a farm.
- ❖ Prevention of contamination and food safety risks in a safe environment by complying to explicit sanitary standards.

MOBILE PIG SLAUGHTER UNIT-ON WHEELS

M-SH-PIG-OW80

TYPE: TRAILER

Technical Data

- ❖ Dimensions: W:2550, L:13600, H:3800 mm
- ❖ Installed Power: 45 Kw
- ❖ Electricity: 380/400 V, 50 Hz
- ❖ Clean Water Inlet: DN 20
- ❖ Waste Water outlet: DN 50
- ❖ Blood Outlet: DN 20

Unit Equipment

- ❖ Trailer Chassis
 - ❖ Steel Frame Construction
 - ❖ Insulated Panel Covering
 - ❖ Floor Covering and Drainage (SS)
 - ❖ Stunning Box (SS)
 - ❖ Bleeding Area & Processing Area rail systems (SS)
 - ❖ Bleeding Hooks (SS)
 - ❖ Processing Hooks (SS)
 - ❖ Scalding Dehairing Machine (SS)
 - ❖ Overhead Carcass Weighting (SS)
 - ❖ Waste Chute (SS)
 - ❖ Washbasin & Knife Sterilizers (SS)
 - ❖ LED Lighting
 - ❖ Generator
 - ❖ Blood Collection Tank (SS)
 - ❖ Waste Water Collection Tank (SS)
 - ❖ Clean Water Storage Tank (SS)
 - ❖ Water Heater
 - ❖ Fully installed piping (SS)
 - ❖ Fully installed electrical cabling
 - ❖ Cleaning System (Combination Unit – Water, Chemicals, Disinfectant)
 - ❖ Hydraulic Control System for Constructions and equipment
 - ❖ Electrical Control Panel with PLC control
- Optional:*
- ❖ *EFA Cutting Tools Optional*

(SS:AISI 304 Stainless Steel)

MOBILE PIG SLAUGHTER UNIT-ON WHEELS

M-SH-PIG-OW80

TYPE:TRAILER

Technical Room

Weighting

Scalding & Dehairing



Evisceration

Stunning & Bleeding



MOBILE POULTRY SLAUGHTER UNIT-ON WHEELS

M-SH-POULTRY-OW800

TYPE: TRAILER



- ❖ 'Plug-n-play'
- ❖ The unit is combined with a trailer chassis that just needs to be connected to a truck for transportation.
- ❖ A self-contained slaughter unit for chicken with a slaughter capacity up to 80-100 per hour.
- ❖ No construction from ground – self-sufficiency by an integrated technical equipment room.
- ❖ Suitable for daily use at any location, i.e. the backyard of a farm.
- ❖ Prevention of contamination and food safety risks in a safe environment by complying to explicit sanitary standards.

MOBILE POULTRY SLAUGHTER UNIT-ON WHEELS

M-SH-POULTRY-OW800

TYPE: TRAILER

Technical Data

- ❖ Dimensions: W:2550, L:13600, H:3800 mm
- ❖ Installed Power: 55 Kw
- ❖ Electricity: 380/400 V, 50 Hz
- ❖ Clean Water Inlet: DN 20
- ❖ Waste Water outlet: DN 50
- ❖ Blood Outlet: DN 20

Unit Equipment

- ❖ Trailer Chassis
- ❖ Steel Frame Construction
- ❖ Insulated Panel Covering
- ❖ Floor Covering and Drainage (SS)
- ❖ Stunning & slaughter Table Box (SS)
- ❖ Scalding Machine (SS)
- ❖ Plucking Machine (SS)
- ❖ Waste Chute (SS)
- ❖ Washbasin & Knife Sterilizers (SS)
- ❖ Evisceration Rail
- ❖ Evisceration Tables(SS)
- ❖ Pre-cooling Cold room
- ❖ Chicken Carcass Hanged Trolley(SS)
- ❖ LED Lighting
- ❖ Generator
- ❖ Waste Water Collection Tank (SS)
- ❖ Clean Water Storage Tank (SS)
- ❖ Water Heater
- ❖ Fully installed piping (SS)
- ❖ Fully installed electrical cabling
- ❖ Cleaning System (Combination Unit – Water, Chemicals, Disinfectant)
- ❖ Hydraulic Control System for Constructions and equipment
- ❖ Electrical Control Panel with PLC control

Optional:

- ❖ *Cutting Tools Optional*

(SS:AISI 304 Stainless Steel)

MOBILE POULTRY SLAUGHTER UNIT-ON WHEELS

M-SH-POULTRY-OW800

TYPE: TRAILER

Stunning & Bleeding

Technical Room

Pre-Cooling Room

Evisceration

Scalding & Plucking



MOBILE CATTLE SLAUGHTERING UNIT

M-SH-CATTLE-FX80

TYPE: MODULAR

- ❖ A complete slaughter unit with practical power and water connection that meets all requirements by saving the user from construction-related issues.
- ❖ Ready for use.
- ❖ Transport Option 1: Transported as one piece on a 3-Axles extensible low-bed trailer on highways.
- ❖ Configured to meet a daily or weekly average slaughter of cattle.
- ❖ Capacity reaches up to 10-12 cattle/hour.
- ❖ Transport Option 2: Dismantled shipment on 2 containers and installation on-site.



Technical Data

- ❖ Dimensions: W:3200, L:13200, H:5600 mm (H:3200 mm when closed)
- ❖ Installed Power: 8 kW (can varies according to the optional eq.)
- ❖ Electricity Info: 380/400 V, 50 Hz
- ❖ Water Requirement: ... L/min., 4 Bar
- ❖ Air Requirement: 300 L/min., 8 Bar (may vary according to the optional eq.)

MOBILE CATTLE SLAUGHTER UNIT

M-SH-CATTLE-FX80

TYPE: MODULAR

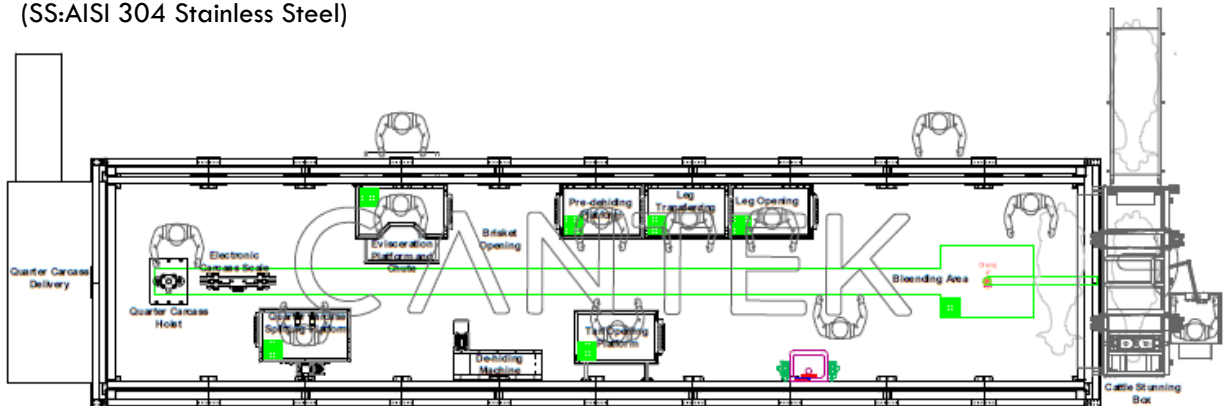
Unit Equipment

- ❖ Double deck slaughter construction
- ❖ Sandwich panel covering
- ❖ Floor covering and stainless-steel drainage
- ❖ Cattle Stunning/ Fixing Box
- ❖ Bleeding area monorail
- ❖ Bleeding crane
- ❖ Monorail bleeding hooks
- ❖ Leg opening platform (SS)
- ❖ Transferring platform (SS)
- ❖ Transferring hoist
- ❖ Processing area stainless steel twin rail
- ❖ Bi-rail processing hooks (SS)
- ❖ Pre-dehiding platform (SS)
- ❖ De-hiding machine
- ❖ Evisceration platform and chute (SS)
- ❖ Pneumatic carcass splitting platform (SS)
- ❖ Electronic carcass scale (SS)
- ❖ Quarter carcass hoist (SS)
- ❖ Washbasin & Knife Sterilizers (SS)
- ❖ Lighting
- ❖ Interior mechanical, electrical and air installations
- ❖ Hose reel for cleaning

Optional:

- ❖ *EFA Cutting Tools*

(SS:AISI 304 Stainless Steel)



MOBILE CATTLE SLAUGHTERING UNIT

M-SH-CATTLE-FX80

TYPE: MODULAR

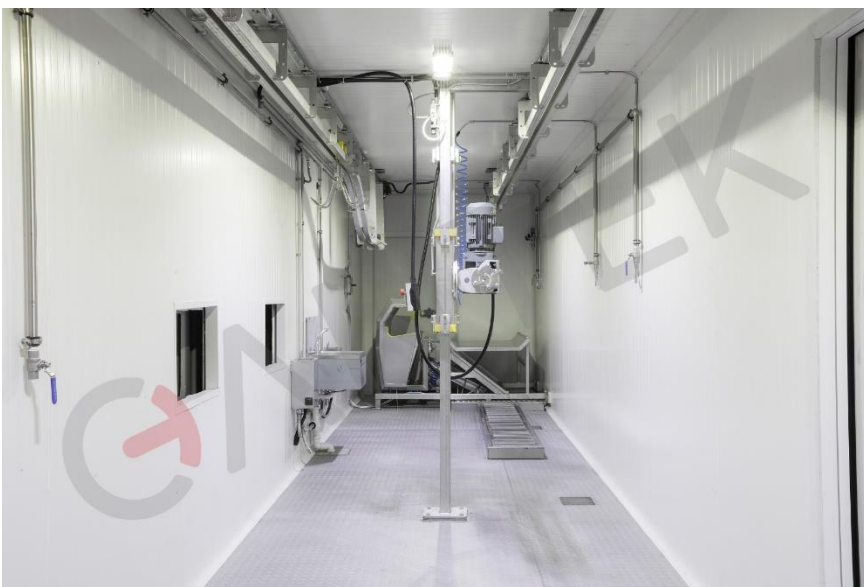


MOBILE SHEEP SLAUGHTER UNIT WITH COLD ROOM

M-SH-SHEEP-T1

TYPE:CONTAINERIZED

- ❖ Suitable for small/medium-sized agricultural businesses such as farms and breeders that want to valorise their own local product.
- ❖ A slaughter capacity is up to 8 sheep/ hour.
- ❖ The cooling room capacity is 9 sheep.
- ❖ Containerized systems are ready for use and save installation costs and time.
- ❖ No requirement for building permit, authorizations or structural work.
- ❖ Management is easier because of the compact design of the system.
- ❖ Complete containerized system with cooling unit in 40" HC container, ready for use without any need for installation.



Technical Data

- ❖ Dimensions: W:2440, L:12190, H:2900 mm
- ❖ Electricity Info: 380 / 400 V, 50 Hz
- ❖ Installed Power: ... kW
- ❖ Water Requirement: ..lt/animal., 4 Bar

MOBILE SHEEP SLAUGHTER UNIT WITH COLD ROOM

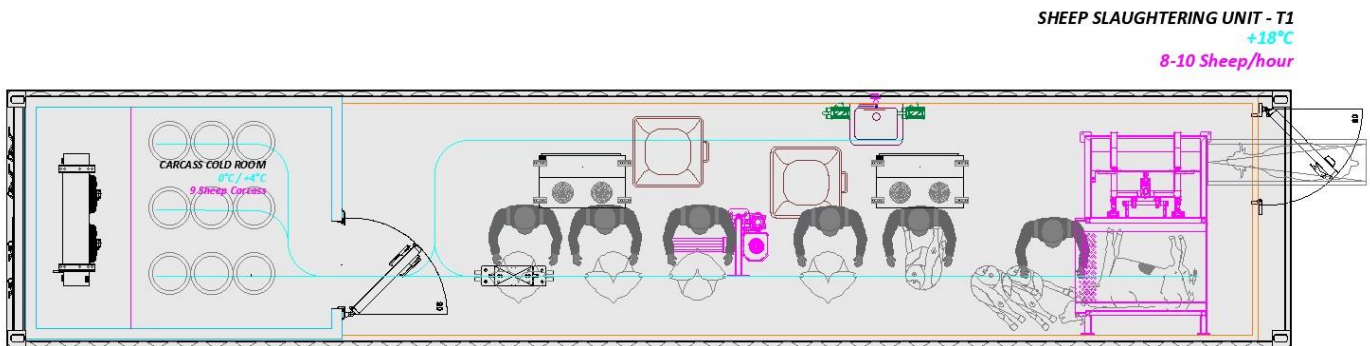
M-SH-SHEEP-T1

TYPE: CONTAINERIZED

Unit Equipment

- ❖ 40" HC Container
- ❖ Rotating Box & Dehider Machine
- ❖ slaughter area sandwich panel covering
- ❖ Bi-rails (SS)
- ❖ SS tread plate floor covering
- ❖ Sheep processing hooks (SS)
- ❖ Electronic carcass scale (SS)
- ❖ Washbasin and knife sterilizers (SS)
- ❖ Working table with pan (SS)
- ❖ Tripe chute (SS)
- ❖ Cold room sandwich panel covering
- ❖ Cold room floor panel covering with plywood
- ❖ Cooling unit
- ❖ Hinged cold room door
- ❖ Carcass exit door
- ❖ Lighting
- ❖ Interior mechanical, electrical installations

(SS: AISI 304 Stainless Steel)



Optional Equipment

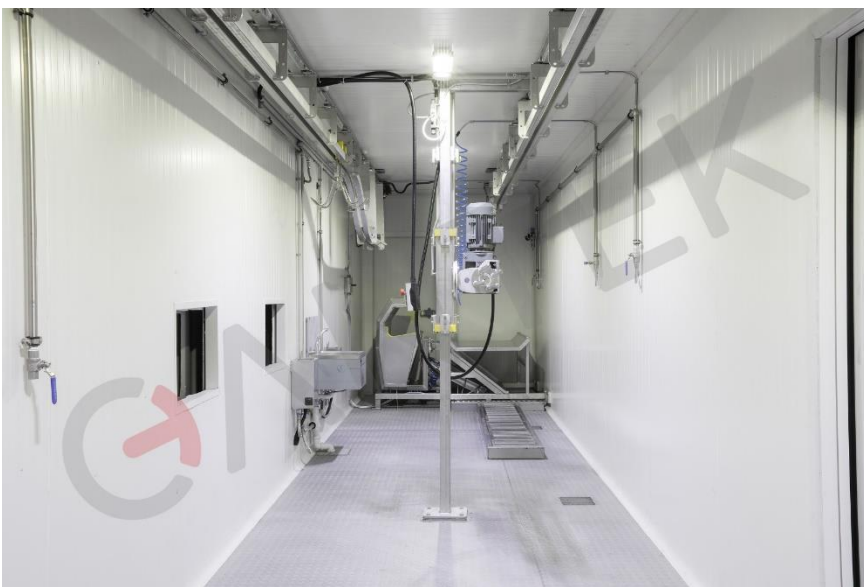
- ❖ Ambiance Cooling; EFA Tools

MOBILE SHEEP SLAUGHTER UNIT

M-SH-SHEEP-T2

TYPE:CONTAINERIZED

- ❖ Suitable for small-medium-sized agricultural businesses such as farms and breeders that want to valorise their own local product.
- ❖ slaughter capacity is up to 12-15 sheep/hour.
- ❖ Containerized systems are ready for use and save installation costs and time.
- ❖ No requirement for any building permit, authorizations or structural work.
- ❖ Management is easier because of the compact design of the system.
- ❖ A complete containerised system in 40" HC container, ready for use without any need for installation.



Technical Data

- ❖ Dimensions: W:2440, L:12190, H:2900 mm
- ❖ Electricity Info: 380 / 400 V, 50 Hz
- ❖ Installed Power: .. kW
- ❖ Water Requirement: ..lt/animal, 4 Bar

MOBILE SHEEP SLAUGHTER UNIT

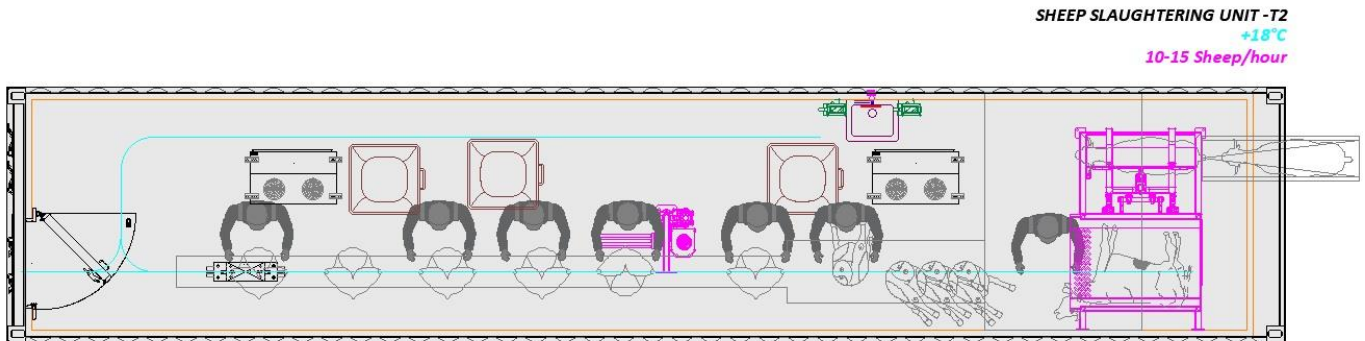
M-SH-SHEEP-T2

TYPE:CONTAINERIZED

Unit Equipment

- ❖ 40" HC Container
- ❖ Rotating Box & Dehider Machine
- ❖ Sandwich panel covering
- ❖ Bi-rails (SS)
- ❖ Aluminium tread plate floor covering
- ❖ Sheep processing hooks (SS)
- ❖ Electronic carcass scale (SS)
- ❖ Washbasin and knife sterilizers (SS)
- ❖ Working table with pan (SS)
- ❖ Tripe chute (SS)
- ❖ Lighting
- ❖ Hose reel for cleaning
- ❖ Interior mechanical, electrical installations

(SS:AISI 304 Stainless Steel)



Optional Equipment

- ❖ Ambiance Cooling; EFA Tools

MOBILE POULTRY SLAUGHTER UNIT

M-SH-POULTRY-T1

TYPE: CONTAINERIZED

- ❖ These ready-for-use modular slaughter units can be installed quickly and easily, even in small spaces.
- ❖ The modular slaughter and processing unit is the best solution for small to medium size agricultural businesses willing to invest in the slaughter process.
- ❖ No requirements for any building permit, authorizations or structural work.
- ❖ The poultry slaughter can be processed throughout all stages with ease in this unit.
- ❖ The modular slaughter unit for poultry guarantees maximum efficiency with a limited financial investment.



Technical Data

- ❖ Capacity: 80-100 BPH
- ❖ Dimensions: W:2440, L:12190, H:2900 mm
- ❖ Installed Power: 26 kW
- ❖ Electricity Info: 380 V/400V 50Hz
- ❖ Water Requirement: ... lt / Pcs Poultry
- ❖ Air Requirement: 6-8 Bar,

MOBILE POULTRY SLAUGHTER UNIT

M-SH-POULTRY-T1

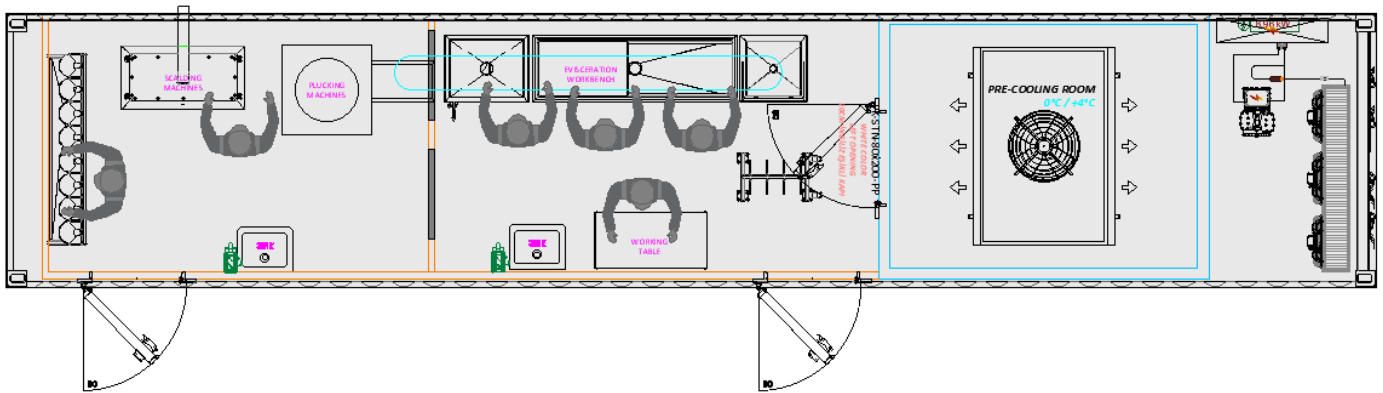
TYPE:CONTAINERIZED

Unit Equipment

- ❖ 40" HC Container
- ❖ Sandwich panel covering
- ❖ SS tread plate floor covering
- ❖ Killing funnel (SS)
- ❖ Scalding
- ❖ Drum Plucker (SS)
- ❖ Evisceration stand (SS)
- ❖ Carcass transport trolley (for air chilling)
- ❖ Chilling system
- ❖ Cold-room door
- ❖ Lighting
- ❖ Electric control panel
- ❖ Washbasin and Knife sterilizers (SS)
- ❖ Interior mechanical, electrical installation
- ❖ Hose reel for cleaning

(SS:AISI 304 Stainless Steel)

POULTRY SLAUGHTERING UNIT
80-100 Chicken/hour



Optional Equipment

- ❖ Ambiance Cooling for process

MOBILE CARCASS COLDROOM UNIT

M-CCR-T1

TYPE:CONTAINERIZED

- ❖ Suitable for small-medium-sized agricultural businesses such as farms and breeders that want to valorise their own local product.
- ❖ Cold room capacity is up to 2000 kg. (~65-75 sheep or ~7-8 cattle)
- ❖ Containerized systems are ready to be used, save installation costs and time.
- ❖ They do not require any building permit, authorizations or structural work.
- ❖ Management is easier because of the compact design of the system.
- ❖ Complete containerised system with cooling unit in 40" HC container, ready for use without any need for installation.



Technical Data

- ❖ Dimensions: W:2440, L:12190, H:2900 mm
- ❖ Electricity Info: 380 / 400 V, 50 Hz
- ❖ Installed Power: ... kW

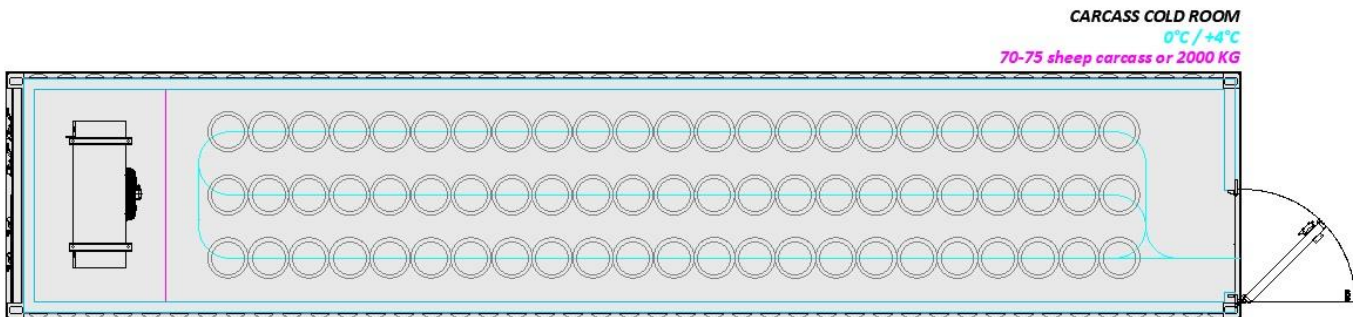
MOBILE CARCASS COLDROOM UNIT

M-CCR-T1

TYPE:CONTAINERIZED

Unit Equipment

- ❖ 40" HC Container
- ❖ Supporting column and beams
- ❖ Sandwich panel covering
- ❖ Floor panel cover with plywood
- ❖ Cooling unit
- ❖ Bi- rails (SS)
- ❖ Sheep or cattle storage hooks (SS)
- ❖ Insulated cold-room door
- ❖ Lighting
- ❖ Interior mechanical, electrical installations



MOBILE CARCASS CUTTING/DEBONING UNIT

M-CUTTING-T1

TYPE:CONTAINERIZED

- ❖ Suitable for small-medium-sized agricultural businesses such as farms and breeders that want to valorise their own local product.
- ❖ The capacity is approx. 2 cattle carcass or 10-12 sheep carcass per hour.
- ❖ Containerized systems are ready for use and save installation costs and time.
- ❖ No requirement for any building permit, authorizations or structural work.
- ❖ Complete containerised system with cooling unit in 40" HC container, ready for use without any need for installation.



Technical Data

- ❖ Dimensions: W:2440, L:12190, H:2900 mm
- ❖ Electricity Info: 380 / 400 V, 50 Hz
- ❖ Installed Power: ... kW
- ❖ Water Requirement: .. Lt/min., 4 Bar

MOBILE CARCASS CUTTING/DEBONING UNIT

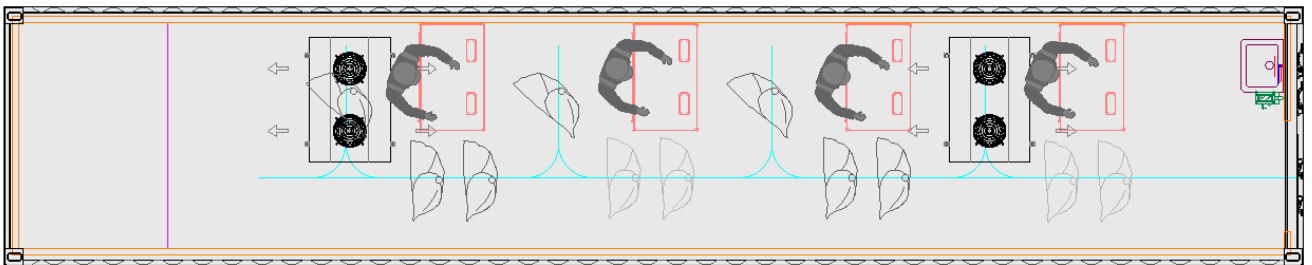
M-CUTTING-T1

TYPE:CONTAINERIZED

Unit Equipment

- ❖ 40" HC Container
- ❖ Supporting column and beams
- ❖ Sandwich panel covering
- ❖ Bi- rails (SS)
- ❖ Tread plate floor covering(SS)
- ❖ Cutting Tables (SS)
- ❖ Electronic carcass scale (SS)
- ❖ Washbasin and knife sterilizers (SS)
- ❖ Lighting
- ❖ Interior mechanical, electrical installations

CARCASS DEBONING-CUTTING UNIT
+10°C



Optional Equipment

- ❖ Trolley, band saws
- ❖ weighting, vacuum, tray sealer etc.

MOBILE OFFAL PROCESSING UNIT

M-OFFAL-T1 & T2 (T1:CATTLE T2:SHEEP)

TYPE:CONTAINERIZED

- ❖ Suitable for small-medium-sized agricultural businesses such as farm and breeders that want to valorise their own local product.
- ❖ They are quickly implemented with low investment cost and high margin profit.
- ❖ Complete containerised system with cooling unit in 40" HC container, ready for use without any need for installation.



Technical Data

- ❖ Dimensions: W:2440, L:12190, H:2900 mm
- ❖ Electricity Info: 380 / 400 V, 50 Hz
- ❖ Installed Power: 5 kW (without cleaning machines)
- ❖ Water Requirement: ... lt/min., 4 Bar

MOBILE OFFAL CLEANING UNIT

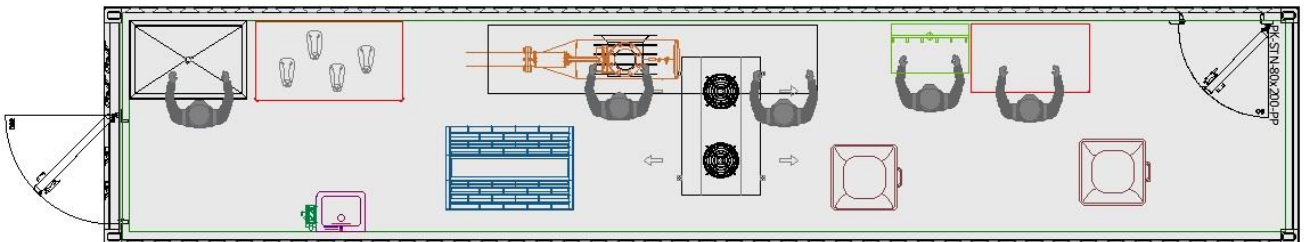
M-OFFAL-T1 & T2 (T1:CATTLE T2:SHEEP)

TYPE:CONTAINERIZED

Unit Equipment

- ❖ 40" HC Container
- ❖ Sandwich panel covering
- ❖ SS tread plate floor covering
- ❖ Tripe Intestine separation and washing table (SS)
- ❖ Hose reel for cleaning
- ❖ Tripe tipper crane
- ❖ Offal hanger (SS)
- ❖ Washbasin and knife sterilizers (SS)
- ❖ Working table (SS)
- ❖ Lighting
- ❖ door
- ❖ Interior mechanical, electrical installations

OFFAL CLEANING UNIT
+18°C



Optional Equipment

- ❖ Tripe cleaning & Refiner, Head & Leg
- ❖ Dehairing, Nail remover etc.

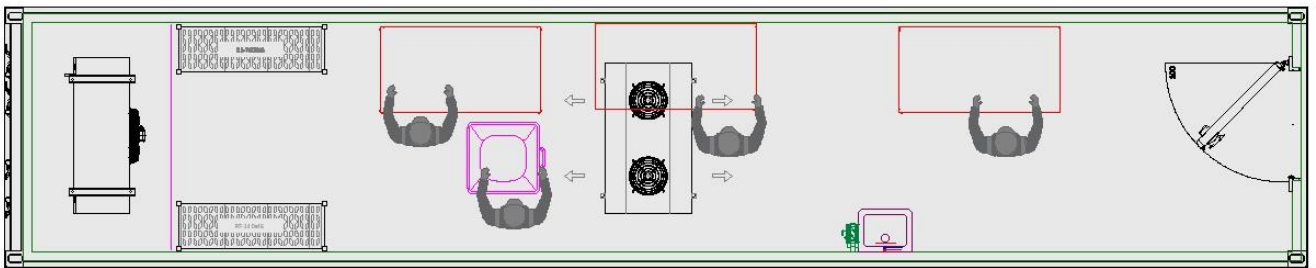
MOBILE PACKAGING UNIT

M-PACKAGING-T1 & P1 (T1:MEAT P1:POULTRY)

TYPE:CONTAINERIZED

- ❖ 40" HC Container
- ❖ Sandwich panel covering
- ❖ SS tread plate floor covering
- ❖ knife sterilizers (SS)
- ❖ Working table (SS)
- ❖ Lighting
- ❖ door
- ❖ Interior mechanical, electrical installations

PACKAGING UNIT
+10°C



Optional Equipment

- ❖ Vacuum machines, tray sealer machines
- ❖ Table product weighting unit etc.

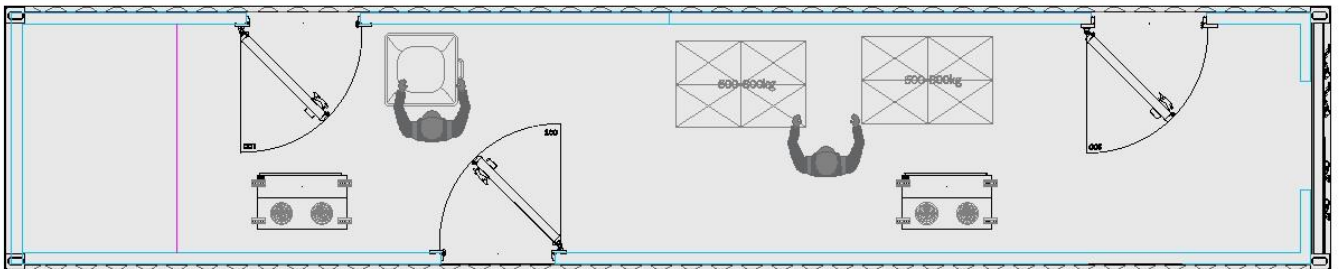
MOBILE CORRIDOR UNIT

M-CORRIDOR-T1 & T2 (T1:WITH RAIL T2:W.OUT RAIL)

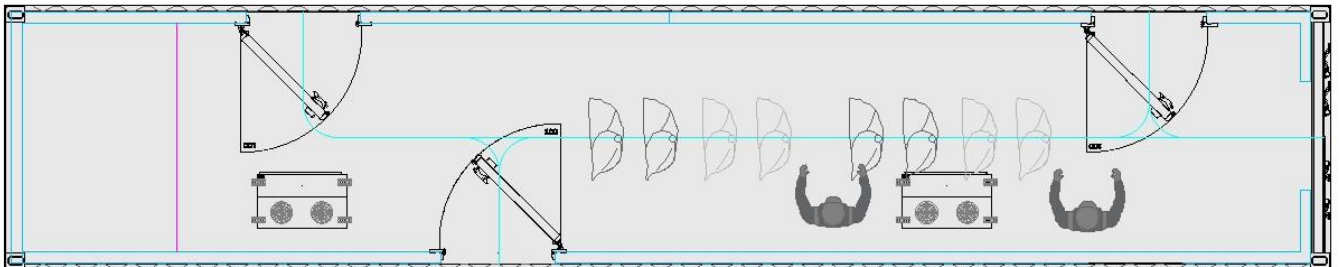
TYPE:CONTAINERIZED

- ❖ 40" HC Container
- ❖ Sandwich panel covering
- ❖ SS tread plate floor covering
- ❖ Lighting
- ❖ Door
- ❖ Interior mechanical, electrical installations

CORRIDOR UNIT-WITHOUT RAIL
+10°C



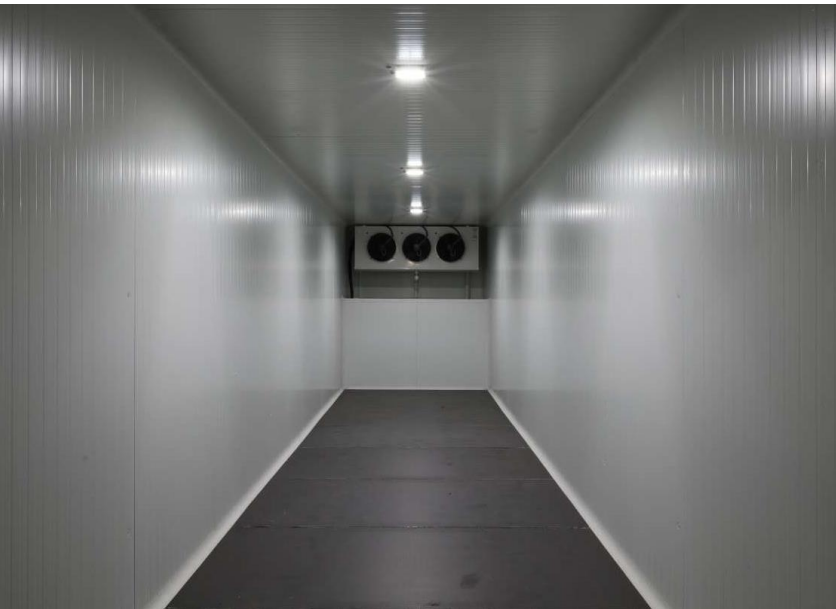
CORRIDOR UNIT-WITH RAIL
+10°C



MOBILE COLDROOM UNITS

TYPE: CONTAINERIZED

- ❖ Cantek containerized cold storage unit are movable units complying with international standards for truck transportation.
- ❖ It is a complete containerised system with cooling unit in 40" HC container, ready for use without any need for installation.
- ❖ You can store any kind of products that need to be kept in a cooled environment on shelves (made by Cantek), pallets or boxes.
- ❖ The cold room is spacious and easy to keep clean.



MOBILE COLDROOM UNIT FRESH STORAGE (0°C+4°C)

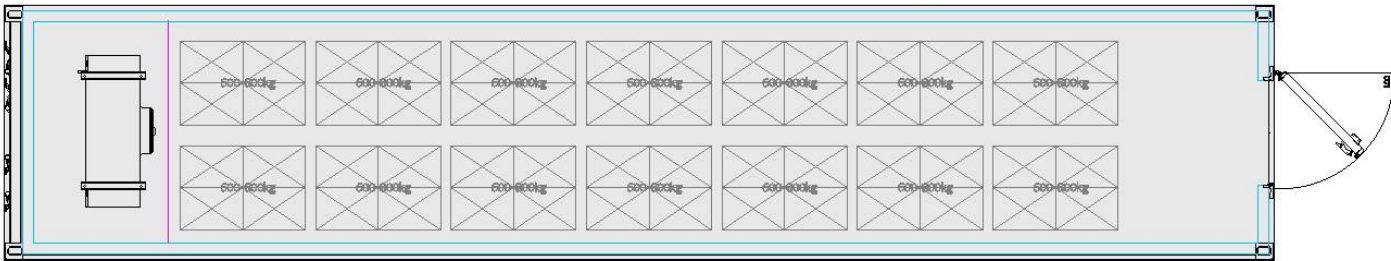
M-CR-40FT

TYPE:CONTAINERIZED

Unit Equipment

- ❖ 40" HC Container
- ❖ Sandwich panel covering
- ❖ Floor panel cover with plywood
- ❖ Cooling unit
- ❖ Insulated cold-room door
- ❖ Electric control panel
- ❖ Lighting
- ❖ Interior mechanical, electrical installations

| | |
|---|---|
| PRE-COOLING UNIT 0°C / +4°C 2.000kg/day temp. reducing 36°C to +4°C | FRESH STORAGE UNIT 0°C / +4°C 14 palletes -8.000-9.000kg |
|---|---|



MOBILE COLDROOM UNIT FROZEN STORAGE (-18°C)

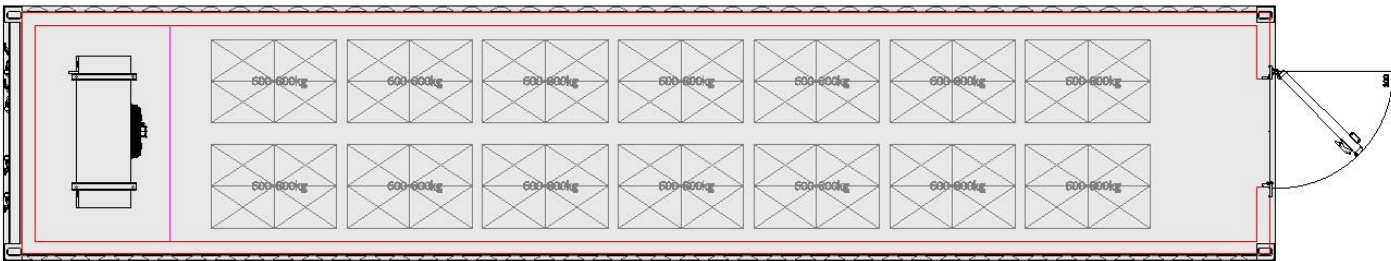
M-DR-40FT

TYPE:CONTAINERIZED

Unit Equipment

- ❖ 40" HC Container
- ❖ Sandwich panel covering
- ❖ Floor panel cover with plywood
- ❖ Cooling unit
- ❖ Insulated cold-room door
- ❖ Electric control panel
- ❖ Lighting
- ❖ Interior mechanical, electrical installations

FROZEN STORAGE UNIT
-18°C
14 palletes -8.000-9.000kg



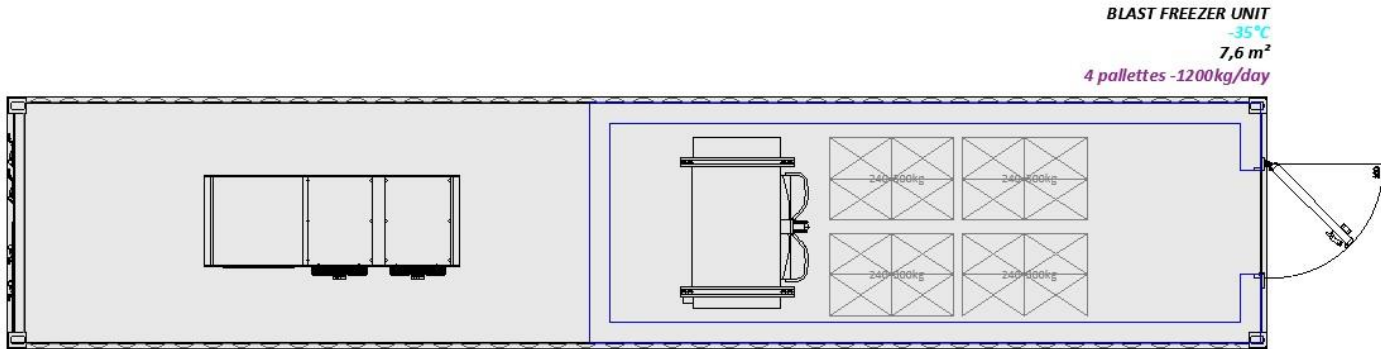
MOBILE COLDROOM UNIT BLAST FREEZER (-35°C)

M-BF-40FT

TYPE: CONTAINERIZED

Unit Equipment

- ❖ 40" HC Container
- ❖ Sandwich panel covering
- ❖ Floor panel cover with plywood
- ❖ Cooling unit
- ❖ Insulated cold-room door
- ❖ Electric control panel
- ❖ Lighting
- ❖ Interior mechanical, electrical installations



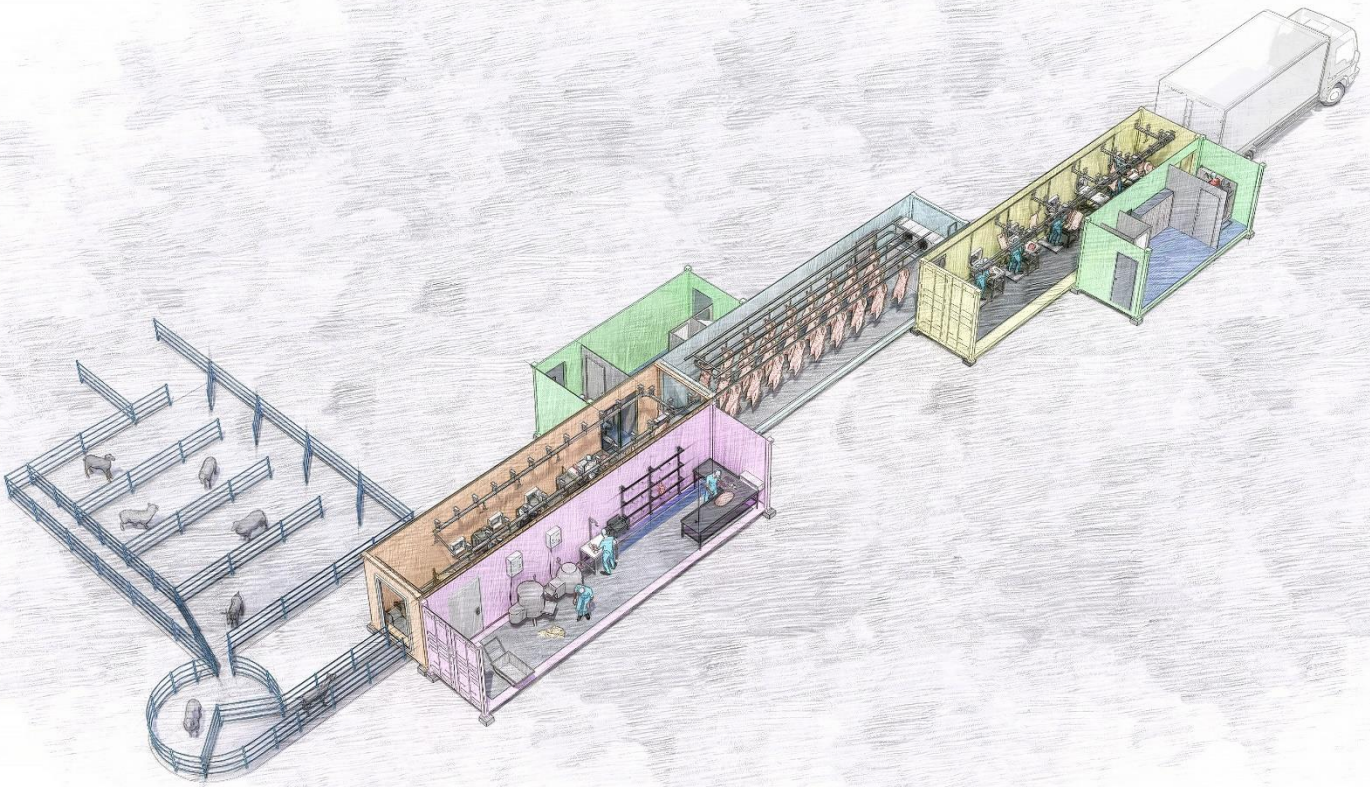
COMBINED MOBILE SOLUTIONS

Create your customized plant –

unique | ultra-efficient | unparalleled

By combining the slaughter units with complementary units for different purposes, i.e. carcass cold room, offal cleaning, deboning, and dressing units,

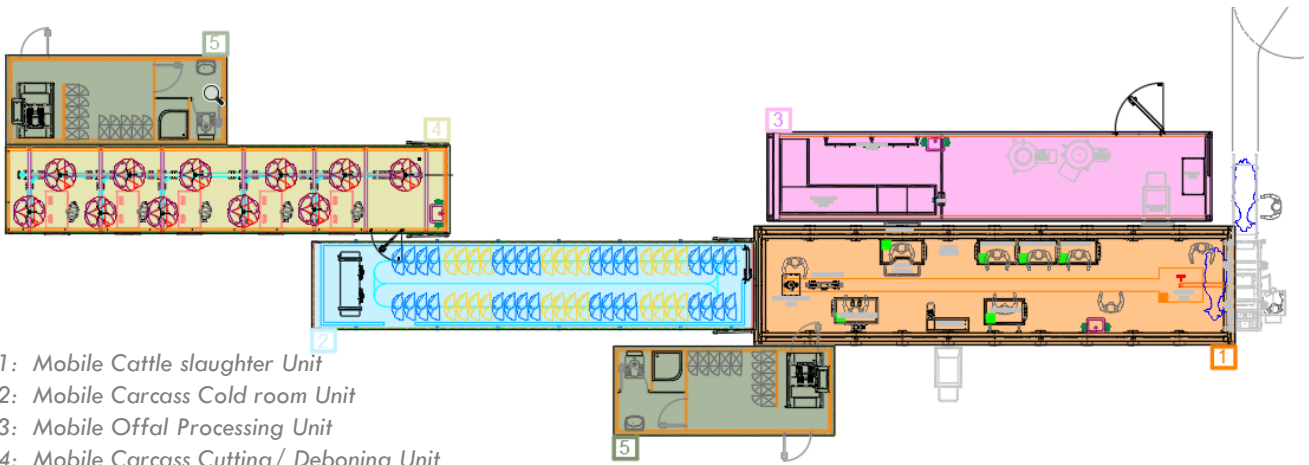
you are capable to combine your mobile unit solution that equals the standards of a modern slaughterhouse without any additional building structure!



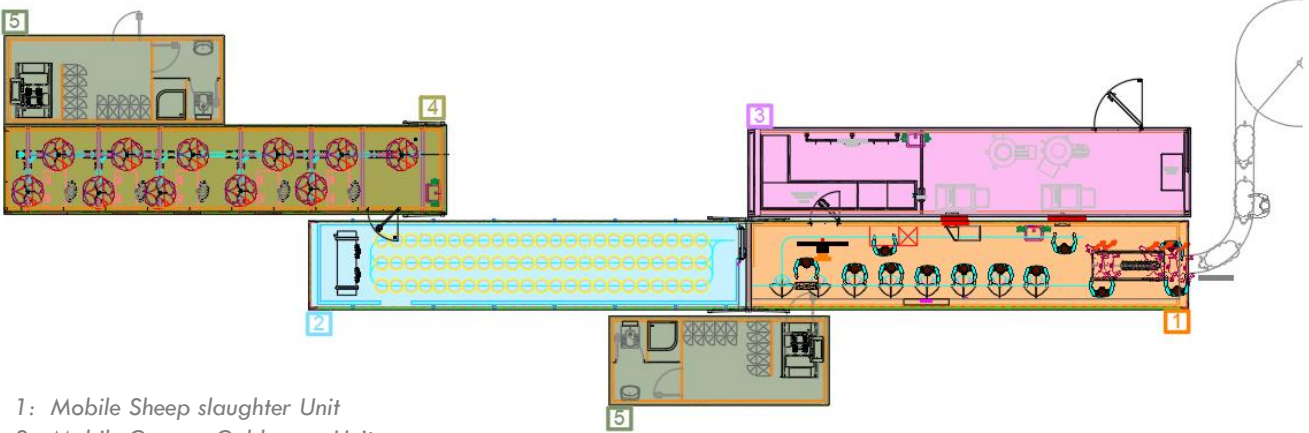
- 1: Mobile slaughter Unit
- 2: Mobile Carcass Cold room Unit
- 3: Mobile Offal Processing Unit
- 4: Mobile Carcass Cutting/ Deboning Unit
- 5: Mobile Dressing Unit

COMBINED MOBILE SOLUTIONS

- ❖ Our mobile systems can be used individually or combined depending on the customer-specific requirements.
- ❖ Additionally, it is possible to link these units with existing buildings, i.e. to expand the plant space + operation areas and/or increase slaughter capacity.
- ❖ The unit quantities depend on the customer requirements.



EXAMPLE COMBINATION FOR CATTLE

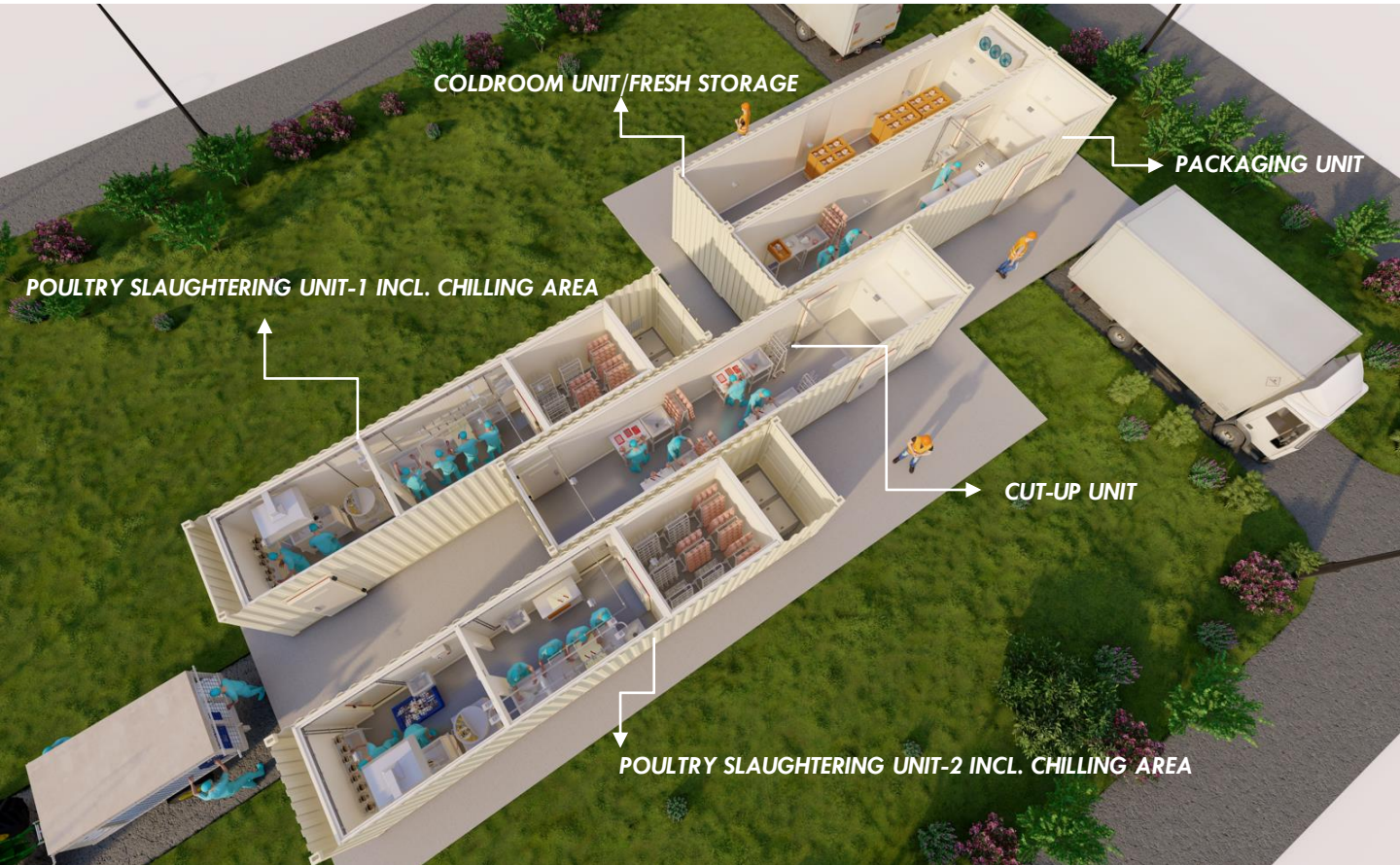


EXAMPLE COMBINATION FOR SHEEP

COMBINED MOBILE SOLUTIONS

REFERENCE PROJECT

A COMPLETE COMBINED POULTRY MODULAR PROCESSING PLANT PROJECT
1600 CHICKEN/DAY | 5 UNITS
LOCATION: AZERBAIJAN



COMBINED MOBILE SOLUTIONS

REFERENCE PROJECT

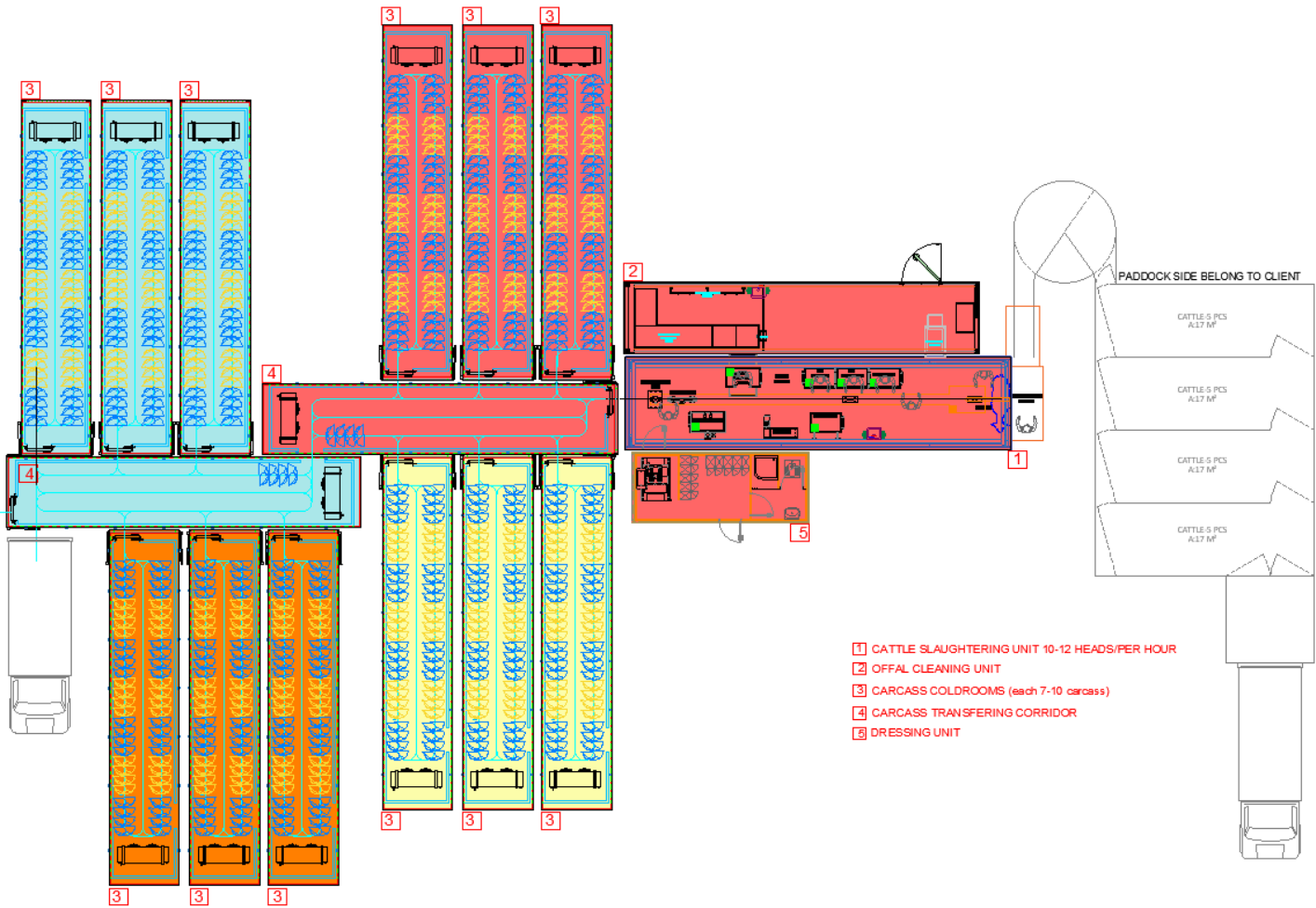
REF: A COMPLETE COMBINED SHEEP&GOAT MODULAR PROCESSING PLANT PROJECT
80 SHEEP/DAY | 5 UNITS
LOCATION: AZERBAIJAN



COMBINED MOBILE SOLUTIONS

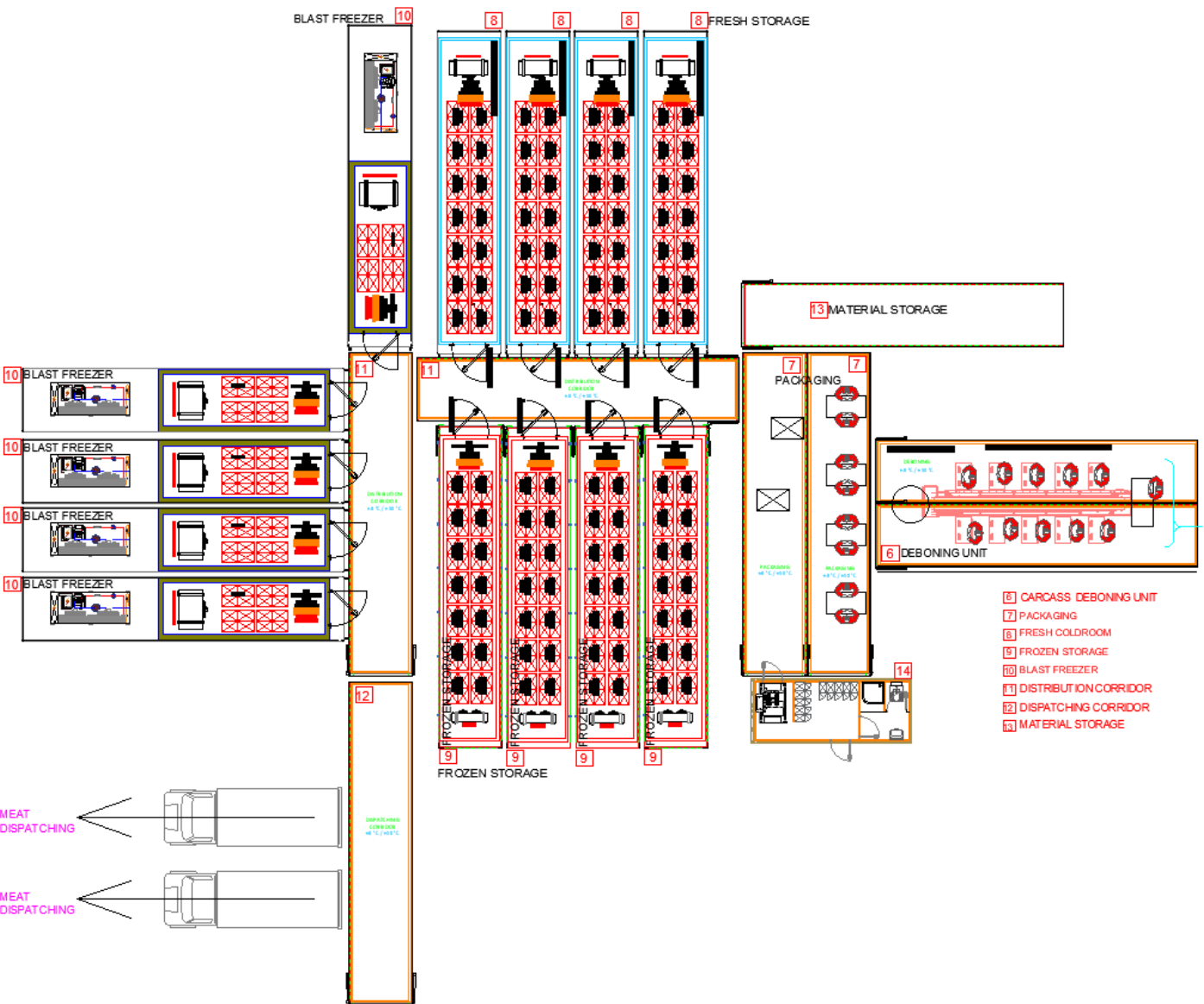
REFERENCE PROJECT

A COMPLETE COMBINED CATTLE MODULAR PROCESSING PLANT – STAGE-1
 SLAUGHTERHOUSE FACILITY 76 CATTLE/DAY | 23 UNITS
 LOCATION: MONGOLIA



COMBINED MOBILE SOLUTIONS REFERENCE PROJECT

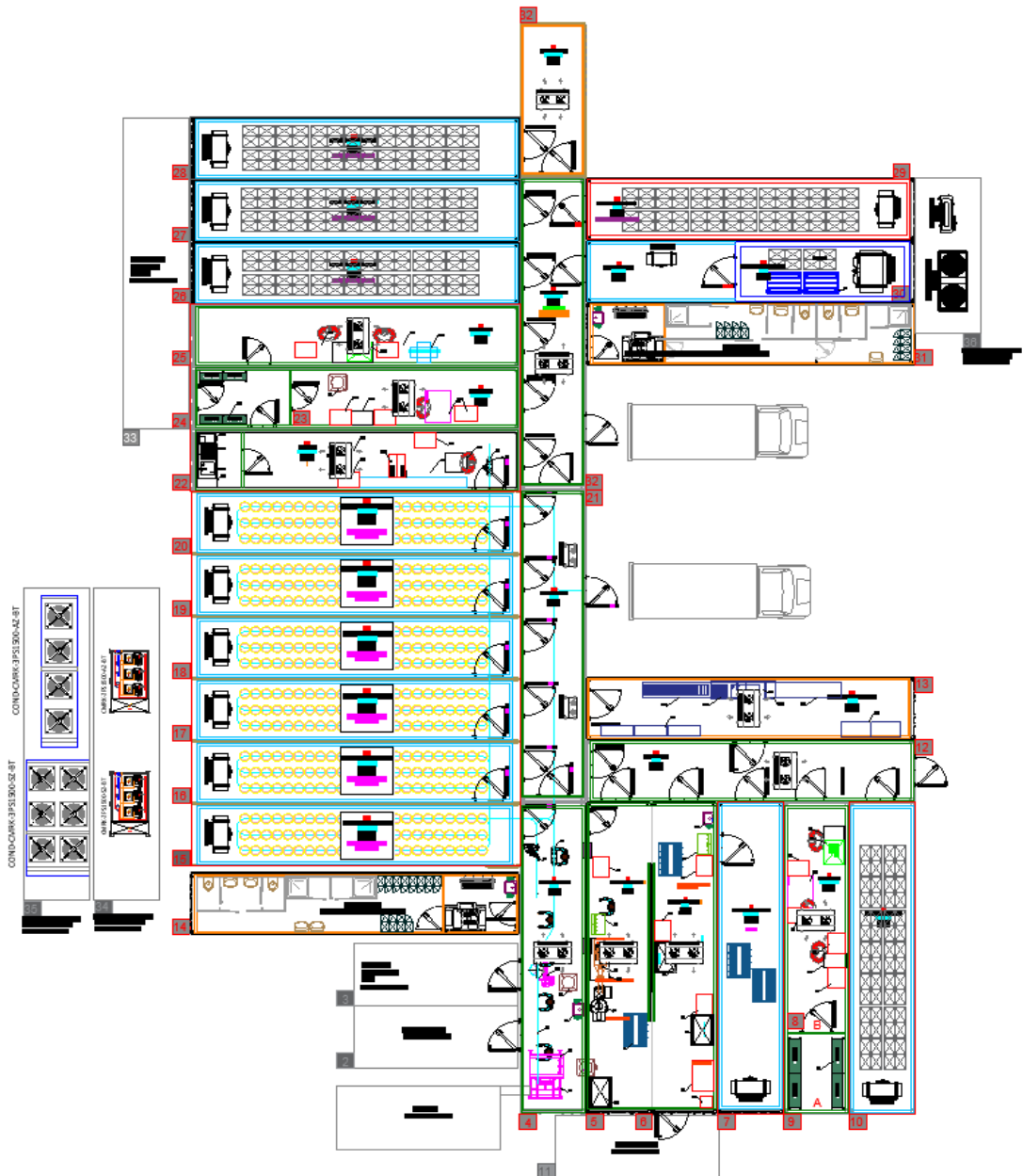
A COMPLETE COMBINED CATTLE MODULAR PROCESSING PLANT— STAGE-2
DEBONING FACILITY 76 CATTLE CARCASS/DAY | 22 PCS UNITS
 LOCATION: MONGOLIA



COMBINED MODULAR SOLUTIONS

REFERENCE PROJECT

A COMPLETE COMBINED SHEEP MODULAR PROCESSING PLANT PROJECT
SLAUGHTERHOUSE FACILITY 150 SHEEP CARCASS/DAY | 26 UNITS
LOCATION: ALGERIA





Organize Sanayi Bölgesi 2. Kısım
21. Cad. No:1 Antalya / TURKEY
T. +90 (242) 258 17 00



www.cantekgroup.com