

# The Social and Solidarity Economy

From the Margins to the Mainstream

13 to 16 September 2021



This project is funded  
by the European Union



**OECD**

BETTER POLICIES FOR BETTER LIVES



**OECD**  
Global Action

Promoting  
**Social & Solidarity  
Economy** Ecosystems

# Social Impact Measurement: Friend Or Foe?

16 September 2021

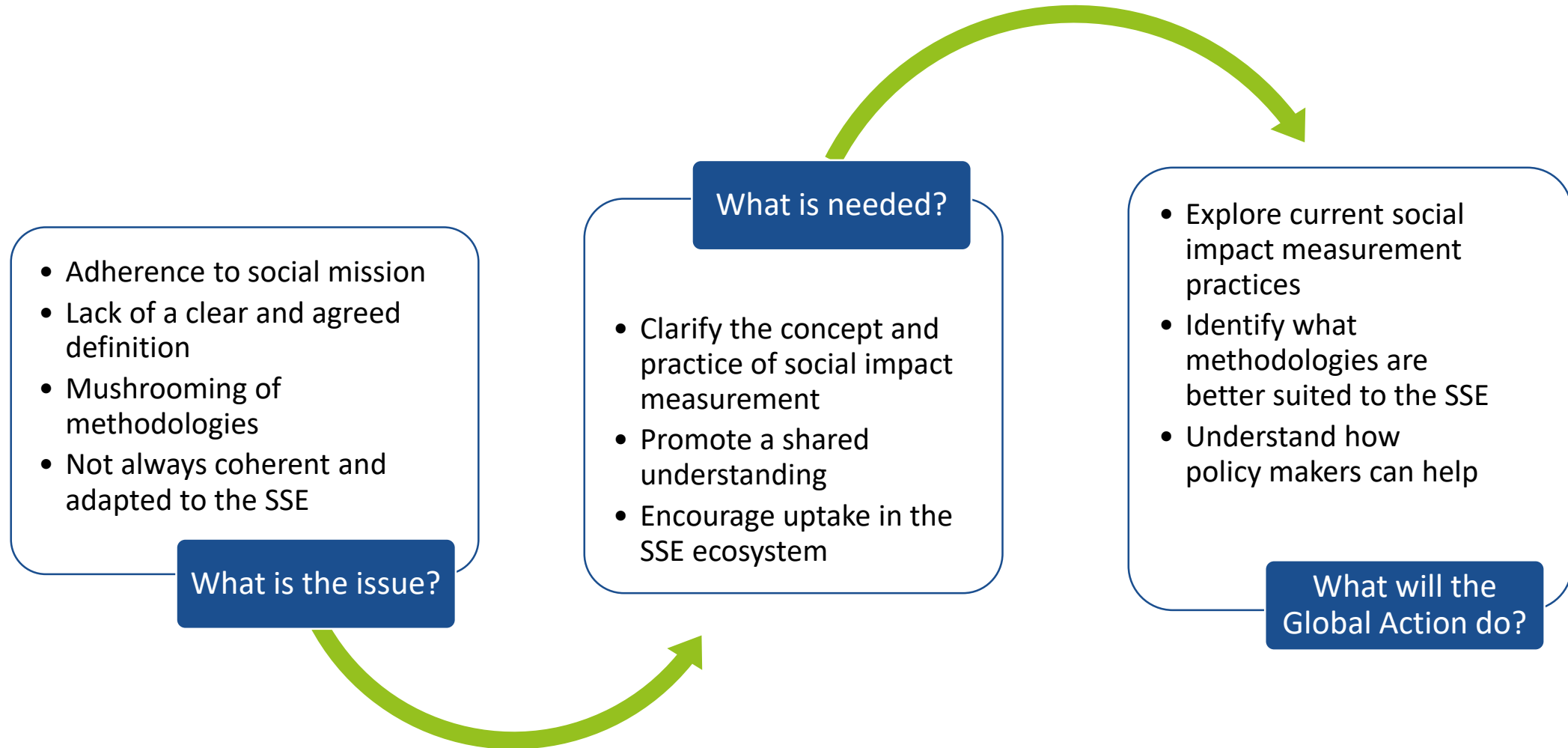
Irene Basile, Policy Analyst, OECD



This project is funded  
by the European Union



# Why is social impact measurement important for the SSE?



OECD  
Global Action

Promoting  
Social & Solidarity  
Economy Ecosystems

# What do we mean by social impact measurement?

*“Social impact measurement aims to assess the social value and impact produced by the activities or operations of any for-profit or non-profit organisation”*

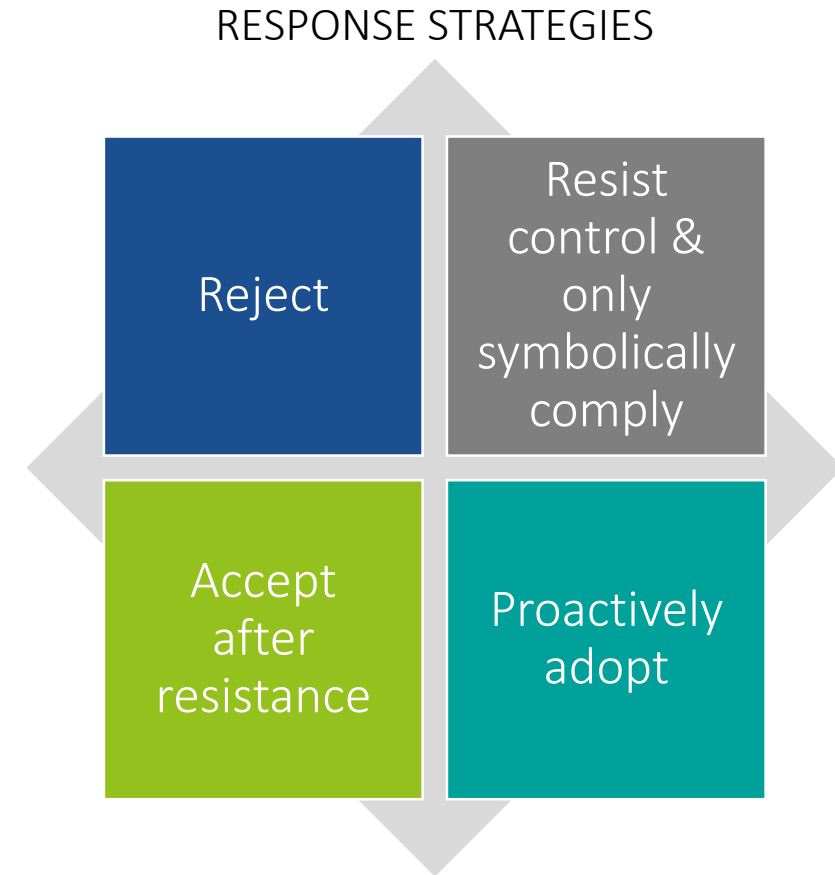
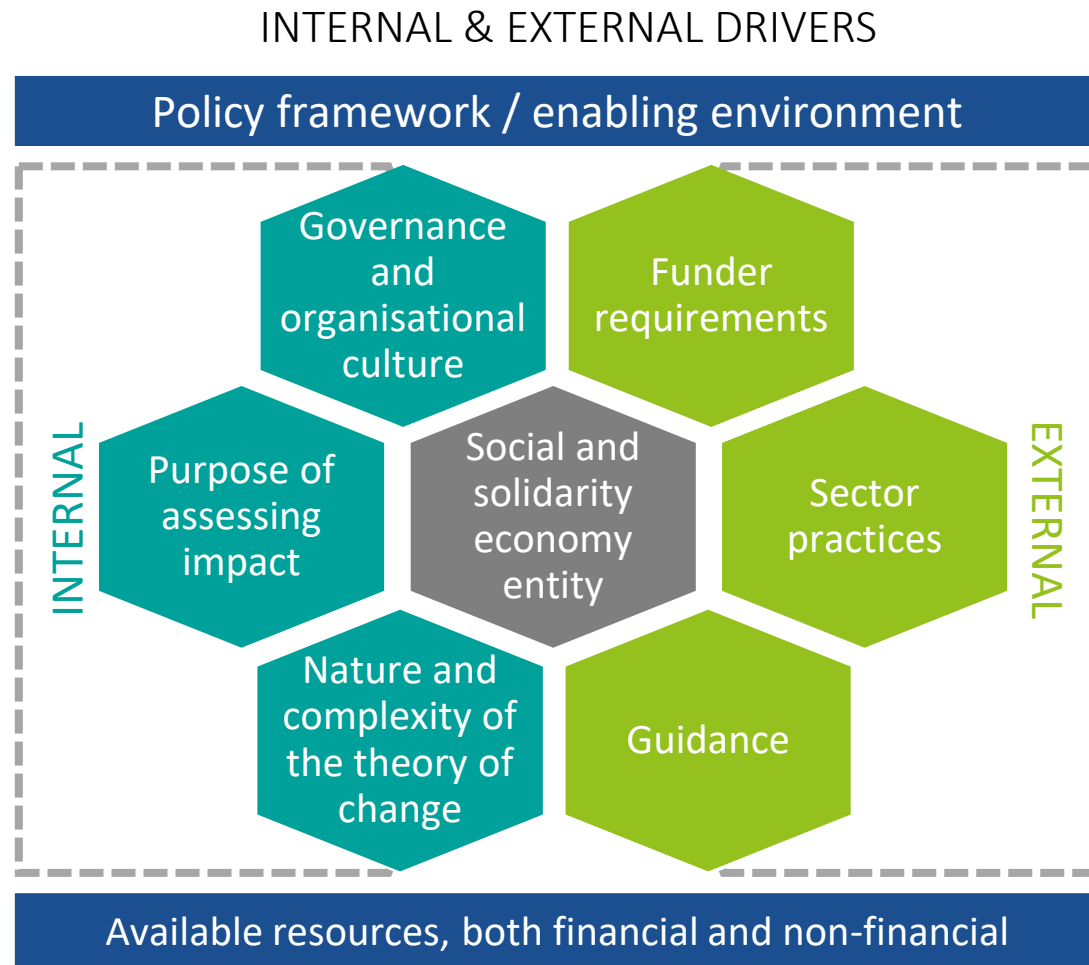
OECD/EU (2015)



OECD  
Global Action

Promoting  
Social & Solidarity  
Economy Ecosystems

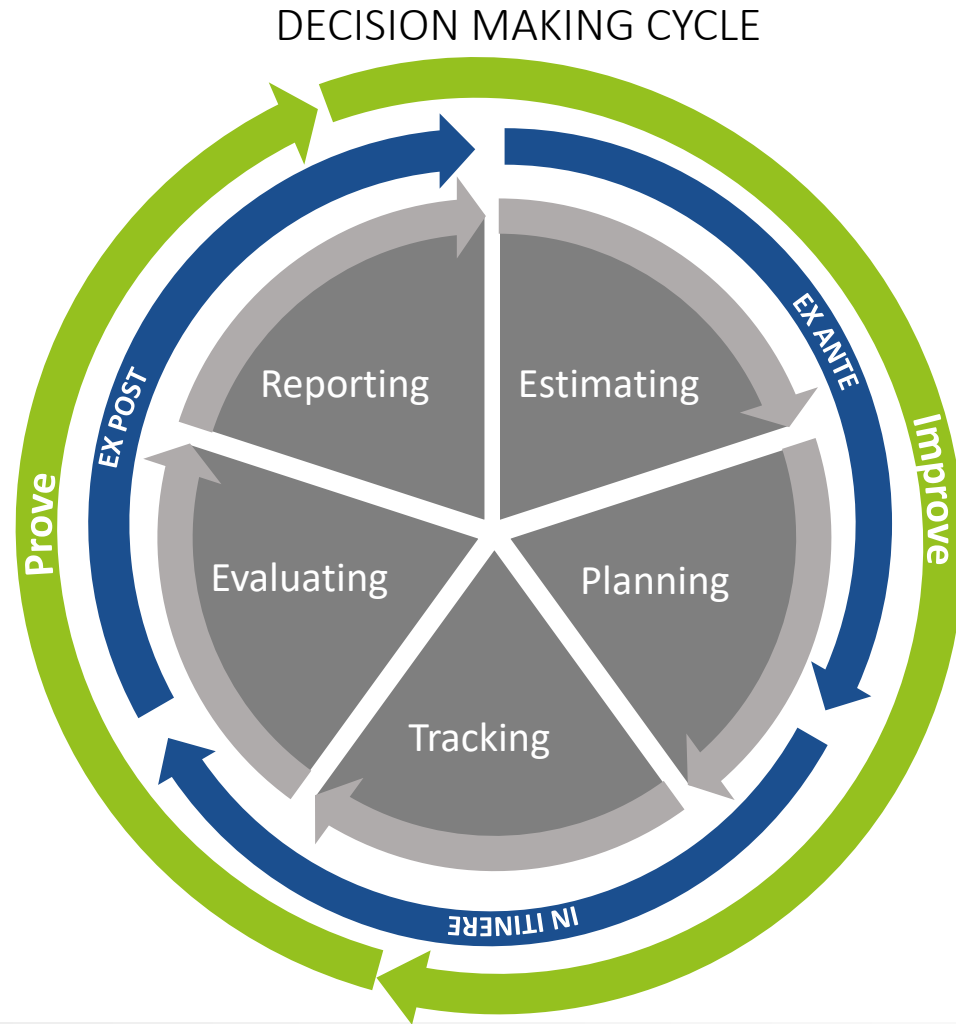
# Factors shaping social impact measurement practices



OECD  
Global Action

Promoting  
Social & Solidarity  
Economy Ecosystems

# Meeting the needs of SSE organisations



## SPECIFIC OBJECTIVES



OECD  
Global Action

Promoting  
Social & Solidarity  
Economy Ecosystems

# How can policy makers help?



## Improve the policy framework

(strategy, regulation, ring-fencing support)



## Deliver guidance

(open-access manuals, adapted tools, harmonisation)



## Foster evidence

(impact studies, repositories of knowledge)



## Support capacity building

(technical assistance, training, specialised intermediaries)



**OECD**  
Global Action

Promoting  
**Social & Solidarity  
Economy Ecosystems**

# Panel discussion



**Juan Manuel Sanchez-Teran**  
Spain

Deputy Director General for Social Economy and  
CSR, Ministry of Labour and Social Economy



**Lisa Hehenberger**  
ESADE  
Associate Professor



**Serena Miccolis**  
AICCON  
Coordinator of the Social Impact Assessment  
Research Area



**Kate Ruff**  
Common Approach  
Lead



**Juan Manuel Martinez Louvier**  
Mexico  
Director of INAES

Moderated by



**Irene Basile**  
OECD  
Policy Analyst

Participants are invited to share questions through the  
Q&A function.



**OECD**  
Global Action

Promoting  
**Social & Solidarity  
Economy Ecosystems**



# Join the conversation



[socialeconomyandinnovation@oecd.org](mailto:socialeconomyandinnovation@oecd.org)



[www.oecd.org/cfe/leed/fpi-action.htm](http://www.oecd.org/cfe/leed/fpi-action.htm)



OECD Centre for Entrepreneurship, SMEs, Regions and Cities



@OECD\_local



[www.oecdcoito.blog/](http://www.oecdcoito.blog/)



[www.oecd.org/cfe/newsletter.htm](http://www.oecd.org/cfe/newsletter.htm)



**This project is funded  
by the European Union**

