





TruBend 7050  
with Flex Cell

## Pattern Part Flyer



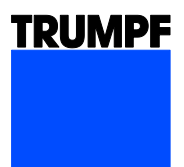
### TruBend 7050 with the Flex Cell – a quick automation solution

The bending automation system, Flex Cell, transforms your manual TruBend 7050 into TRUMPF's fastest mobile bending cell. If rush orders come in, you can use it to quickly scale up your production capacity for small and simple parts. And this without additional labor requirements at the machine. With a footprint of less than ten square meters, the TruBend 7050 with the Flex Cell can fit into every facility.

-  TRUMPF's fastest mobile bending cell for simple parts
-  Automated bending power in the smallest of areas (< 10 m<sup>2</sup>)
-  Flexible docking of the bending cell at the bending machine, by hand, pallet jack or forklift truck
-  Its doubled loading capacity enables an autonomous running time of up to 42 hours



Further information can be found here:  
[www.trumpf.info/2rj3ut](http://www.trumpf.info/2rj3ut)



## One bend

Pre-cut part dimensions: L 100 x B 96 x H 1 mm



Pre-cut part dimensions: L 91 x B 55 x H 3 mm



## Two bends

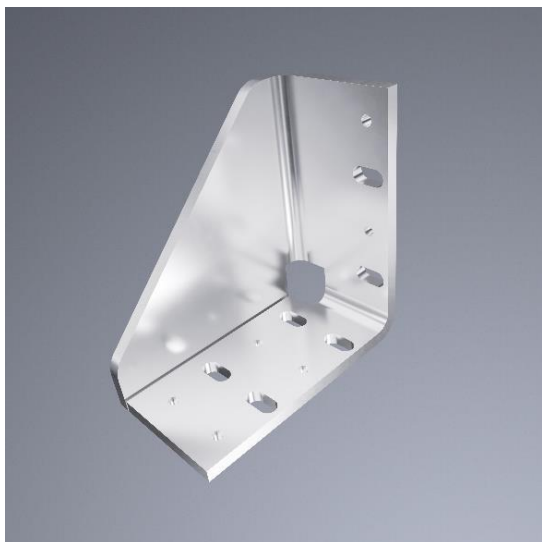
Pre-cut part dimensions: L 150 x B 72 x H 2 mm



Pre-cut part dimensions: L 256 x B 137 x H 1,5 mm



Pre-cut part dimensions: L 169 x B 225 x H 6 mm



Pre-cut part dimensions: L 141 x B 145 x H 2 mm

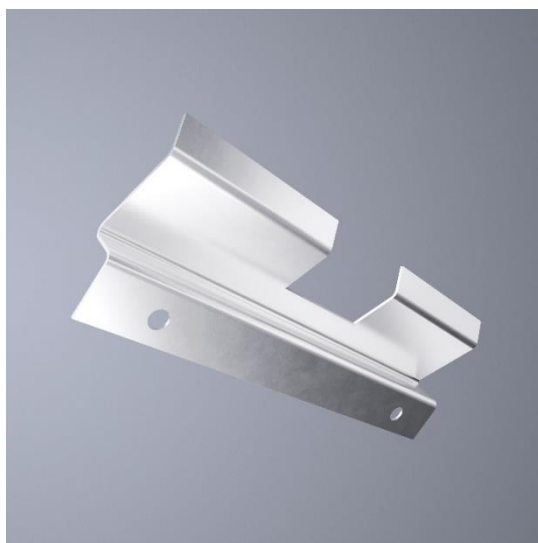


## Three bends

Pre-cut part dimensions: L 290 x B 85 x H 1,5 mm



Pre-cut part dimensions: L 150 x B 68 x H 1 mm



## Four bends

Pre-cut part dimensions: L 250 x B 235 x H 3 mm



Pre-cut part dimensions: L 373 x B 120 x H 3 mm



Pre-cut part dimensions: L 183 x B 242 x H 1 mm



Pre-cut part dimensions: L 292 x B 172 x H 2 mm



## Technical data of the TruBend 7050

Press force [kN]	500
Bending length [mm]	1530
Working height [mm]	1150
Throat depth: [mm]	250
Dimensions (length x width x height)	2420 x 1805 x 2580
Weight [kg]	5500

## Technical data of the Flex Cell\*

Min. part size [mm]	70 x 50
Max. part size [mm]	600 x 400
Min. sheet thickness [mm]	0,7
Max. sheet thickness [mm]	6
Max. part weight [kg]	5
Dimensions (length x width x height)	2300 x 1400 x 2200

\* depending on the selected options

## Your advantages at a glance



### Master peaks in orders

Your production capacity can be easily increased with the Flex Cell. It will, for example, cover your night-shift operation.



### Goodbye skilled labor shortage

The Flex Cell is your automation solution for the reliable, high-speed bending of simple parts. In this way, you can protect yourself from the skilled labor shortage.



### Autonomous production

Components such as the double sheet detection, the regripping station and the combination grippers ensure trouble-free automation of the bending process and almost autonomous production.



### Sustainability and profitability combined

Lower operating costs thanks to its low area requirement and the increased utilization of your bending machine: the Flex Cell enables you to act both profitably and sustainably.