

Outdoor safety shower with ASA closed eyewash – frost free down to -20°C

EXP-AH-5GS/45G

Floor mounted safety shower with eye/face wash unit designed for use where there is the risk of water within the pipework freezing in cold climates. Trace tape heating and insulation ensures workers exposed to hazardous substances can utilize the safety shower without the risk of malfunction due to freezing conditions.

Meets EN-15154 and ANSI 358.1 requirements.



Specifications

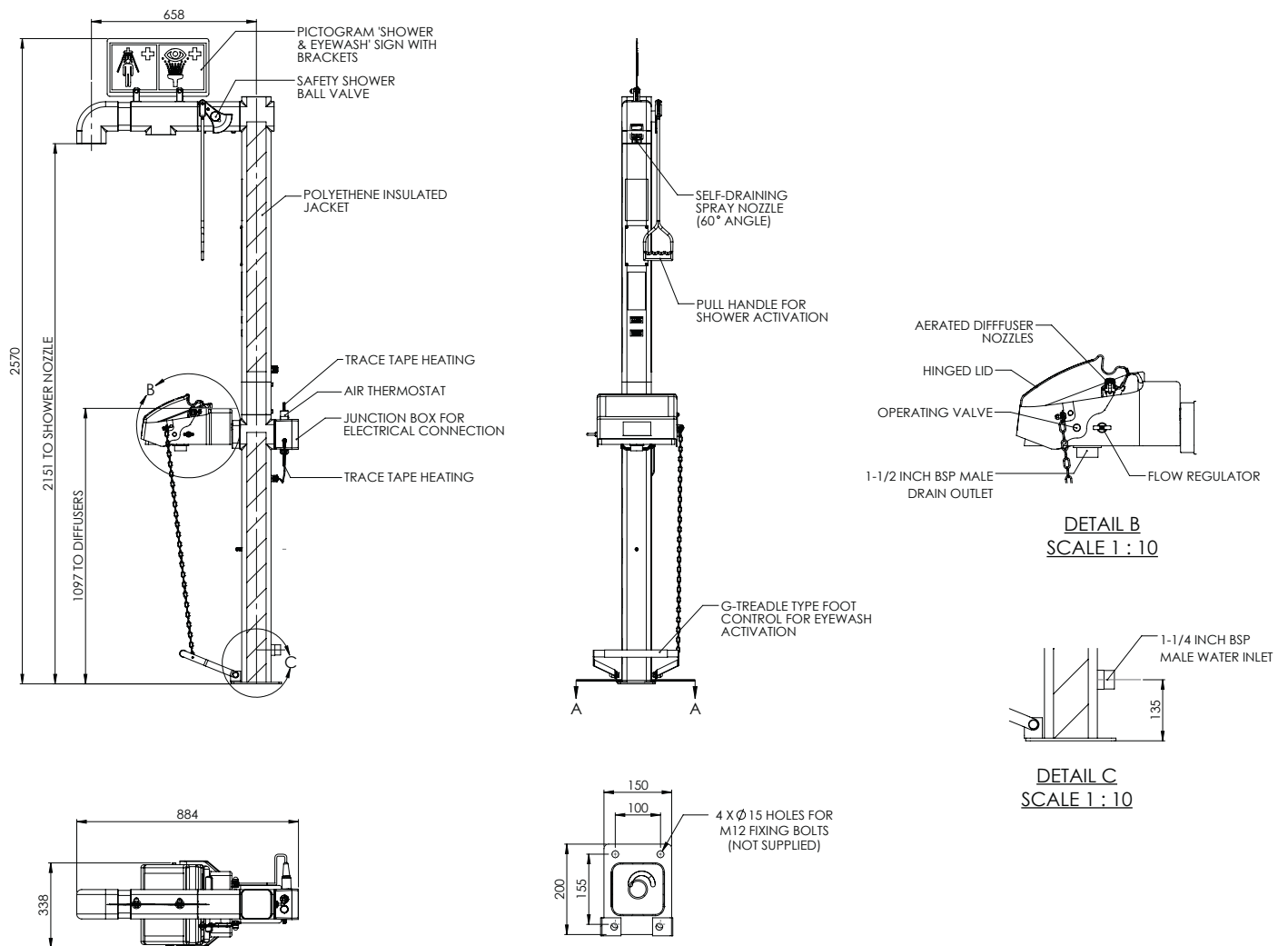
MATERIALS OF CONSTRUCTION	
PIPEWORK & FITTINGS	Stainless steel 316
OPERATING VALVE	Stainless steel 316, full bore, stay open ball valve
SHOWER NOZZLE	Injection moulded nylon 6
EYE WASH	ASA (acrylonitrile styrene acrylate)
EYE WASH DIFFUSERS	Chrome plated brass retaining ring, stainless steel filter mesh, plastic body
INSULATION & OUTER CASING	Polyurethane foam insulation with a medium density polyethylene impact resistant outer casing
SERVICES	
ELECTRICAL EQUIPMENT	ATEX Zone 1 & 2. Gas groups IIA and IIB. Temp Class T3 (IIC available)
ELECTRICAL SUPPLY	240V, single phase, 50/60Hz
HEATING TYPE	Trace tape heated and insulated
HEATING LOAD	57 watts
WATER INLET	1 1/4" male BSP
OPERATING PRESSURE	2 to 6 BAR G / 29 to 87 PSI (higher supply pressures accommodated with the incorporation of the optional pressure reducing valve)
MINIMUM FLOW RATES	Shower: 76 L per minute / 20 US gal per minute Eye wash: 12 L per minute / 3 US gal per minute
AMBIENT OPERATING TEMPERATURE	
MINIMUM	-20°C
MAXIMUM	35°C
OPERATION	
SHOWER	Pull handle
EYE WASH	Pull lid down
DIMENSIONS & WEIGHT	
DIMENSIONS (WxDxH)	338mm (13.3in) x 884mm (34.8in) x 2570mm (101.2in)
WEIGHT	25kg (55lb)

General Arrangement Drawing



Outdoor safety shower
with ASA closed eyewash – frost free down to -20°C

EXP-AH-5GS/45G



www.hughes-safety.com